



Environment and Climate Change Scrutiny Committee

Date: Thursday, 10 March 2022

Time: 10.00 am

Venue: Council Chamber, Level 2, Town Hall Extension

Everyone is welcome to attend this committee meeting.

There will be a private meeting for Members of the Committee at 9.30 am, 10 March 2022 in the Council Antechamber.

Access to the Public Gallery

Access to the Public Gallery is on Level 3 of the Town Hall Extension, using the lift or stairs in the lobby of the Mount Street entrance to the Extension. **There is no public access from any other entrance.**

Filming and broadcast of the meeting

Meetings of the Environment and Climate Change Scrutiny Committee are 'webcast'. These meetings are filmed and broadcast live on the Internet. If you attend this meeting you should be aware that you might be filmed and included in that transmission.

Membership of the Environment and Climate Change Scrutiny Committee

Councillors - Chohan, Flanagan, Foley, Hassan, Holt, Hughes, Igbon (Chair), Jeavons, Lynch, Lyons, Razaq, Sheikh, Shilton Godwin and Wright

Agenda

1. Urgent Business

To consider any items which the Chair has agreed to have submitted as urgent.

2. Appeals

To consider any appeals from the public against refusal to allow inspection of background documents and/or the inclusion of items in the confidential part of the agenda.

3. Interests

To allow Members an opportunity to declare any personal, prejudicial or disclosable pecuniary interest they might have in any items which appear on this agenda; and [b] record any items from which they are precluded from voting as a result of Council Tax/Council rent arrears. Members with a personal interest should declare that interest at the start of the item under consideration. If members also have a prejudicial or disclosable pecuniary interest they must withdraw from the meeting during the consideration of the item.

4. Minutes

To approve as a correct record the minutes of the meeting held on 10 February 2022.

Pages
5 - 8

5. Manchester Green and Blue Strategy and Implementation Plan, including annual update and a report on the Tree Action Plan

Report of the Director of Planning, Building Control and Licensing

This report provides the annual update on the delivery of the Green and Blue Implementation Plan together with information on the delivery of the Tree Action Plan. It looks back at the progress made during 2021 and sets out how the Green and Blue Implementation Plan has been refreshed to ensure it remains relevant and in the context of the current challenges faced by the city.

Pages
9 - 96

6. Waste, Recycling and Street Cleansing Services - Future Delivery - To follow

7. Overview Report

Report of the Governance and Scrutiny Support Unit

This is a monthly report, which includes the recommendations monitor, relevant key decisions, the Committee's work programme and any items for information.

Pages
97 - 104

Information about the Committee

Scrutiny Committees represent the interests of local people about important issues that affect them. They look at how the decisions, policies and services of the Council and other key public agencies impact on the city and its residents. Scrutiny Committees do not take decisions but can make recommendations to decision-makers about how they are delivering the Manchester Strategy, an agreed vision for a better Manchester that is shared by public agencies across the city.

The Environment and Climate Change Scrutiny Committee areas of interest include The Climate Change Strategy, Waste, Carbon Emissions, Neighbourhood Working, Flood Management, Planning policy and related enforcement and Parks and Green Spaces.

The Council wants to consult people as fully as possible before making decisions that affect them. Members of the public do not have a right to speak at meetings but may do so if invited by the Chair. If you have a special interest in an item on the agenda and want to speak, tell the Committee Officer, who will pass on your request to the Chair. Groups of people will usually be asked to nominate a spokesperson. The Council wants its meetings to be as open as possible but occasionally there will be some confidential business. Brief reasons for confidentiality will be shown on the agenda sheet.

The Council welcomes the filming, recording, public broadcast and use of social media to report on the Committee's meetings by members of the public.

Agenda, reports and minutes of all Council Committees can be found on the Council's website www.manchester.gov.uk.

Smoking is not allowed in Council buildings.

Joanne Roney OBE
Chief Executive
Level 3, Town Hall Extension,
Albert Square,
Manchester, M60 2LA

Further Information

For help, advice and information about this meeting please contact the Committee Officer:

Lee Walker, Scrutiny Support Officer
Tel: 0161 234 3376
Email: lee.walker@manchester.gov.uk

This agenda was issued on **Wednesday 2 March 2022** by the Governance and Scrutiny Support Unit, Manchester City Council, Level 2, Town Hall Extension, Manchester M60 2LA

This page is intentionally left blank

Environment and Climate Change Scrutiny Committee

Minutes of the meeting held on 10 February 2022

Present:

Councillor Igbon – in the Chair
Councillors Chohan, Flanagan, Foley, Hassan, Hughes, Jeavons, Lyons, Sheikh, Shilton Godwin and Wright

Apologies: Councillors Holt and Lynch

Also present:

Councillor Rawlins, Executive Member for Environment
Samantha Nicholson, Director, Manchester Climate Change Agency

ECCSC/22/06 Minutes

Decision

To approve the minutes of the meeting held on 13 January 2022 as a correct record.

ECCSC/22/07 Neighbourhood Directorate Budget 2022/23

Further to minute (ECCSC/21/27) the Committee considered the report of the Strategic Director (Neighbourhoods) which provided a further update on the saving proposals being proposed as part of the 2022/23 budget process.

Key points and themes in the report included:

- Following the Spending Review announcements and provisional local government finance settlement 2022/23 the Council was forecasting a balanced budget for 2022/23, a gap of £37m in 2023/24 and £58m by 2024/25;
- The settlement was for one year only and considerable uncertainty remained from 2023/24;
- A longer-term strategy to close the budget gap was being prepared with an estimated requirement to find budget cuts and savings in the region of £60m over the next three years;
- £30m of risk-based reserves had been identified as available to manage risk and timing differences;
- An overview of the headline priorities for the service;
- A description of the Neighbourhoods Revenue Budget Strategy;
- A description of the Capital budget and pipeline priorities; and
- A description of the Climate Change Priorities and Investment.

Some of the key points that arose from the Committee's discussions were: -

- Noting that the Government had failed to adequately fund the Council and they needed to be held to account;

- Supporting the reported Climate Change Priorities and Investment;
- Whilst recognising the varied work and initiatives delivered by officers to tackle climate change and support communities, more needed to be done to publicise this work and communicate this positive work with both residents and Members;
- The need to improve air quality across the city, making reference to those issues caused as a result of poor traffic flow and cars idling;
- The continued call for the Council to act as a catalysis and influencer to escalate the activities and actions needed to address climate change;
- The need to scrutinise the cost effectiveness of the Council's financial contribution to the Manchester Climate Change Agency; and
- Calling for the continued, long term funding of the Climate Change Officer posts.

In response to questions, officers clarified the capital spend reporting that had been presented, the rating of Carbon Literacy training, adding that this training was now mandatory for all staff and information relating to the Cargo Bikes referenced within the report.

In considering the budget proposals, a Member recommended an amendment. He recommended that a Capital Budget of £1m be established for the Executive Member for Environment, with this budget specifically used to support work and initiatives to tackle air pollution across the city. He recommended that this budget could be funded by levying a Section 106 charge of £1000 for all new build homes for sale in Manchester (excluding social housing and a reduced charge for affordable housing).

This recommendation was supported by the Committee.

A further recommendation was proposed that funding be provided to permanently fund the Climate Change Officer posts. This recommendation was supported by the Committee.

Decisions

The Committee recommend that the Executive;

1. Establish a Capital Budget of £1m for the Executive Member for Environment, with this budget specifically used to support work and initiatives to tackle air pollution across the city. This budget could be funded by levying a Section 106 charge of £1000 for all new build homes for sale in Manchester (excluding social housing and a reduced charge for affordable housing).
2. That funding be provided to permanently fund the Climate Change Officer posts.

ECCSC/22/08 Refresh of Manchester's Climate Change Framework 2020-25

The Committee considered the report of the Manchester Climate Change Agency and Partnership that provided a progress update on the refresh of Manchester's Climate Change Framework 2020-2025.

Key points and themes in the report included:

- Providing an introduction and background;
- Describing that the Framework refresh was to establish more detailed and quantified data around the actions the city needed to take to reduce its direct, energy related emissions and stay within its carbon budgets;
- The work to better understand and address indirect emissions;
- The Framework would also include an update on research to move the city forwards on climate adaptation and resilience;
- The recent research on the intersection between addressing health inequalities and climate action;
- The consultation process; and
- Next steps, noting that the refreshed Framework was expected to be completed in the first quarter of the new financial year (April-June 2022) and launched in quarter two (July-Sept 2022).

Some of the key points that arose from the Committee's discussions were: -

- The need for Councillors to effectively scrutinise the work and outcomes of the Manchester Climate Change Agency and Partnership;
- How were the progress against the carbon emissions targets and carbon budget for the city reported;
- The need to reiterate the urgency of the climate emergency;
- The need to communicate with residents the scale of the challenge and the need for immediate action;
- Noting the scale of the challenge to adequately insulate homes across Greater Manchester and the need for the government to fund this, particularly in the context of increasing fuel and energy prices;
- The need to include consideration of carbon emissions from transport and not restrict consideration of this subject area to Nitrogen Dioxide (No2) emissions; and
- The need to galvanise and progress actions across the city at speed and scale to mitigate the impending climate disaster, using all levers and influence available to the Council.

The Director, Manchester Climate Change Agency informed the Committee that the progress against the city's carbon budget was reported annually via the annual report that is produced and presented to the Committee. She advised that it would not be possible to produce a meaningful quarterly update due to the complexity of the data reporting and the lags in the data release from a number of sources. She described that the refresh of Manchester's Climate Change Framework 2020-2025 would articulate the scale of the challenge and establish actions against the targets.

The Director, Manchester Climate Change Agency agreed with the comment regarding the importance of communicating with all residents the need to take immediate responsibility and actions to address carbon emissions. She advised that it was important to recognise that people would have a range of different motivations to implement personal behavioural change, so there was not a 'one size fits all' approach to achieve this. She described that they did have a Community

Engagement Programme that was designed to work with and support different community groups on a range of climate change projects. She further made reference to the work of the Youth Board as means of strengthening engagement and communications.

The Executive Member for Environment commented that she noted the comments regarding carbon and transport emissions and advised that a briefing note to Members would be provided following the meeting that described the plans and actions to address this.

The Chair concluded this item of business by paying tribute to all staff working to address climate change. She stated that she recognised the scale of the challenge and the capacity within the Climate Change Agency and Partnership, noting an international global response was required. She further called upon the Government to adequately fund activities to tackle climate change, noting that the larger polluters in the country needed to be prioritised.

The Chair further paid tribute to the Members of the Committee for their continued engagement and scrutiny of the climate agenda, noting that they articulated the voice of residents across the city on this important issue. She commented that the scrutiny process had helped inform and shape the Council's response to addressing carbon emissions and would continue to contribute to the city to becoming zero-carbon by 2038 at the latest.

Decision

The Committee note the report.

ECCSC/22/09 Overview Report

The report of the Governance and Scrutiny Support Unit which contained key decisions within the Committee's remit and responses to previous recommendations was submitted for comment. Members were also invited to agree the Committee's future work programme.

Decisions

The Committee note the report and agree the work programme.

**Manchester City Council
Report for Information**

Report to: Environment and Climate Change Scrutiny Committee
– 10 March 2022

Subject: Manchester Green and Blue Strategy and Implementation Plan,
including annual update and a report on the Tree Action Plan

Report of: Director of Planning, Building Control and Licensing

Summary

This report provides the annual update on the delivery of the Green and Blue Implementation Plan together with information on the delivery of the Tree Action Plan. It looks back at the progress made during 2021 and sets out how the Green and Blue Implementation Plan has been refreshed to ensure it remains relevant and in the context of the current challenges faced by the city. The work on improving our green and blue spaces is an essential component of delivering the vision for Our Manchester. It also contributes to delivering Manchester's Climate Change Action Plan by helping to create a more climate resilient city.

Recommendations

That Environment and Climate Change Scrutiny Committee:

1. Consider and comment on the progress that has been made during 2021 by both the Council and external stakeholders in achieving the actions in the G&BI Implementation Plan and the Tree Action plan
 2. Consider and comment on the refresh of the Green and Blue Strategy Implementation Plan.
 3. Consider and comment on the priorities for the G&BI and Tree Action Plan set out for the coming year.
-

Wards Affected: All

| |
|----------------------------------------------------------------------------------------------------------------------------------------------------|
| <p>Environmental Impact Assessment - the impact of the issues addressed in this report on achieving the zero-carbon target for the city</p> |
|----------------------------------------------------------------------------------------------------------------------------------------------------|

| |
|-----------------------------------------------------------------------------------------------------------------------------------------------------------------------------------------------------------------------------------------------------------------------------------------------------------------------|
| <p>Manchester's tree stock helps to capture and store carbon. Attractive green routes encourage walking and cycling, reducing reliance on cars with a consequent reduction in carbon emissions. Local green space, both public and private can be used to increase the amount of sustainable, locally grown food.</p> |
|-----------------------------------------------------------------------------------------------------------------------------------------------------------------------------------------------------------------------------------------------------------------------------------------------------------------------|

| Manchester Strategy outcomes | Summary of how this report aligns to the OMS |
|-------------------------------------------------------------------------------------------------------------------|------------------------------------------------------------------------------------------------------------------------------------------------------------------------------------------------------------------------------------------------------------------------------------------------|
| A thriving and sustainable city: supporting a diverse and distinctive economy that creates jobs and opportunities | A high quality environment, including trees and open spaces, increases the attractiveness of Manchester as a place in which to work and invest. Jobs are created in the environmental sector through the need to plant and manage the local green and blue infrastructure resource. |
| A highly skilled city: world class and home grown talent sustaining the city's economic success | Manchester competes on a world stage to attract skilled people. A high quality natural environment makes an important contribution to this. |
| A progressive and equitable city: making a positive contribution by unlocking the potential of our communities | An attractive tree filled natural environment should be accessible to all communities within Manchester, offering the potential to gain health benefits through improved air quality and opportunities for relaxation and exercise and learning new skills through volunteering opportunities. |
| A liveable and low carbon city: a destination of choice to live, visit, work | The city's tree stock plays a valuable role in storing carbon and creating a liveable city. High quality multi-functional open spaces also improve the quality of life. |
| A connected city: world class infrastructure and connectivity to drive growth | Appropriate tree planting along transport routes can help mitigate poor air quality. Appropriately located and designed green infrastructure can also increase the permeability of the city reducing surface water flooding along transport routes. |

Contact Officers:

Name: Julie Roscoe
Position: Director of Planning, Building Control and Licensing
Telephone: 0161 234 4552
E-mail: julie.roscoe@manchester.gov.uk

Name: Duncan McCorquodale
Position: Planning and Infrastructure Manager
Telephone: 0161 234 4594
E-mail: duncan.mccorquodale@manchester.gov.uk

Name: Katrina Holt
Position: Principal Planning Policy Officer
Telephone: 0161 234 4570
E-mail: katrina.holt@manchester.gov.uk

Name: Dave Barlow
Position: Senior Policy Officer
Telephone: 0161 234 4507
E-mail: dave.barlow@manchester.gov.uk

Background documents (available for public inspection):

The following documents disclose main facts on which the report is based and have been relied upon in preparing the report. Copies of the background documents are available up to 4 years after the date of the meeting. If you would like a copy please contact one of the contact officers above.

- Manchester Green and Blue Infrastructure Strategy: report to Neighbourhoods Scrutiny Committee and Executive, July 2015, Manchester City Council
- Manchester's Great Outdoors: A Green and Blue Infrastructure Strategy for Manchester: July 2015
- Manchester's Great Outdoors: A Green and Blue Infrastructure Stakeholder Implementation Plan: July 2015
- Green and Getting Greener. A three-year review of progress through Manchester's Great Outdoors: A Green and Blue Infrastructure Strategy for Manchester 2015-18
- Our Manchester Strategy - Forward to 2025
- Manchester G&BI Stakeholder Implementation Plan and Tree Action Plan – Report on Progress: to Neighbourhoods and Environment Scrutiny Committee January 2021
- Manchester City Council Climate Change Action Plan 2020-25 – Report to NESC and February 2021

1.0 Introduction

- 1.1 This report provides the annual review on Manchester’s Great Outdoors – A Green & Blue Infrastructure Strategy for Manchester. As shown in Figure 1 below, the strategy forms part of a framework of strategies, policy and action plans for Manchester which support the city’s strategic objectives related to environment, climate change, sustainable development and access to green space. As shown below, the Strategy is delivered through its accompanying Implementation Plan and supporting Tree Action Plan, both of which play a key role in delivering the Our Manchester vision for a world class city with a high quality environment. Delivery of the Strategy will also be supported through actions and investment under the Park Strategy and Biodiversity Strategy. The Strategy also contributes to the delivery of Manchester’s Climate Change Action Plan, specifically in relation to climate resilience and adaptation, as well as informing the evidence and strategic context for the city’s local development framework, including the refresh of the Local Plan.

Fig1: This shows the relationship of the Green & Blue Infrastructure Strategy to other Council strategies and action plans as described in paragraph 1.1



- 1.2 The delivery of Manchester’s Great Outdoors is achieved through the council working in partnership with its many stakeholders. The main highlights from these actions are set out in this report. A more detailed list of actions taken during 2021 is provided in Appendix 1 to this report.
- 1.3 During 2021 the Green and Blue Strategy Implementation Plan has been refreshed and streamlined to ensure it remains relevant within the context of the current challenges and opportunities faced by the city. This report identifies those key drivers for change and the ways in which the Implementation Plan has been updated. This refreshed version is provided in Appendix 2 of the report. It will form the template for reporting on the delivery of actions going forward.

2.0 Background

- 2.1 Manchester's Great Outdoors – A Green & Blue Infrastructure Strategy for Manchester, together with its Implementation Plan were prepared and jointly owned by the Council and Manchester G&BI stakeholder group on behalf of the wider city in 2015. Together, they have been recognised as a benchmark of excellence, winning the 2018 CIEEM Award for best practice in Knowledge Sharing.
- 2.2 The Strategy is based on a long-term vision. This has been updated as part of the refresh outlined later in the report. The updated vision is that:
By 2025 climate resilient, well maintained green and blue spaces will be an integral part of all neighbourhoods. The city's communities will be living healthy, fulfilled lives, enjoying access to parks and greenspaces and safe green routes for walking, cycling and exercise throughout the city. Green and blue infrastructure will be supporting Manchester's growth.
- 2.3 The delivery of the vision is centred on four objectives:
1. Improving the quality and function of Green and Blue Infrastructure to maximise the benefits it delivers,
 2. Using appropriate Green and Blue Infrastructure as a key component of new developments to help create successful neighbourhoods and support the city's growth,
 3. Improving connectivity and accessibility to Green and Blue Infrastructure within the city and beyond,
 4. Improving and promoting a wider understanding and awareness of the benefits that Green and Blue Infrastructure provides to residents, the economy and the local environment.
- 2.4 A three-year progress report, entitled Green and Getting Greener, was published in 2019. In summary, this identified that since the introduction of the Strategy over £80million had been invested in GI related projects in the city, more than 50 jobs had been created and over a million people had attended events and activities.
- 2.5 During 2021 the Implementation Plan has been further refreshed to take into account the new challenges and opportunities for delivering an improved environment within a growing, successful city. Further detail on how the plan has been updated is provided in section 4 of this report.

Governance - the G&BI Board

- 2.6 The Implementation Plan continues to be delivered by the Council and its partners. The Executive member for Environment who covers all green issues, including climate change, leads on this agenda. Progress against the Council actions is steered within the council by the G&BI Board, chaired by the Director of Planning, Building Control and Licensing and attended by relevant Heads of Service. This provides an opportunity to focus on the strategy objectives and add value to the way G&BI is delivered across the city. It

enables issues that arise to be discussed across services rather than in isolation. Ward members are often best placed to know their local community groups and understand their communities' needs and opportunities and together with council officers they are involved with many of the actions needed to deliver the G&BI Strategy.

Working in Partnership - the G&BI stakeholder Group

- 2.7 Many of the actions within the G&BI Strategy and Implementation Plan are achieved through collaboration with Manchester's partners. A stakeholder group known as the Manchester G&BI Group meets at regular intervals. This group is made up of a range of experienced practitioners and stakeholder organisations, including officers from the Council, Corridor Manchester, Manchester Climate Change Agency, Greater Manchester Combined Authority and Registered Housing Providers, statutory bodies such as the Environment Agency and Natural England, environmental charities like Groundwork, City of Trees, the National Trust, Wildlife Trust and RSPB, and academics from Manchester's Universities. It provides both a forum for sharing best practice and a catalyst for encouraging new partnerships for delivering action in line with the objectives of the G&BI Strategy.

3.0 Key drivers for change

- 3.1 Whether the actions are delivered by the council alone and/or its partners, it is important that the Strategy and its Implementation Plan continue to be relevant to the current challenges and opportunities faced by our city. This section outlines the factors that have driven the refresh of the Implementation Plan.

Climate Emergency

- 3.2 In 2019, Manchester declared a Climate Emergency, putting an even greater spotlight on the need for the city to be climate resilient. Manchester's future climate is expected to reflect the broader and longer-term projections for climate change and climate variability across the United Kingdom. The manifestation of this is likely to be summers being warmer, with the potential for some exceptionally hot days; the likelihood of increases in short-lived heavy rainfall events and winters are likely to be wetter. The city could also face medium-term variations in climate patterns.
- 3.3 The city's Climate Change Action Plan emphasises the importance of green infrastructure and nature based solutions as key tools in helping us adapt to the challenges of the effects of climate change. We also need to take account of the impact a changing climate will have on the functionality of our existing green infrastructure, and to adapt our plans for future environmental improvements accordingly.
- 3.4 The refreshed G&BI Implementation Plan incorporates a clearer vision which places emphasis on a climate-resilient Manchester that enables our buildings,

infrastructure, green and blue spaces, businesses, and people to mitigate and adapt to future climate shocks and stresses.

- 3.5 Increased consideration is being given to nature-based solutions and Sustainable Drainage Solutions (SuDS) on new large developments. The Council has started to work with developers to explore feasible ways of adopting more SuDS, which could be incorporated into the highway drainage network. We have also been successful in competing for external funding, which will be directed to combat flooding on both a local and wider catchment scale across the city. The focus for this will be on clearing out and upgrading the Manchester culverted watercourse network and reducing the size of areas that are currently at risk of flooding, by creating areas where controlled flooding can occur safely, away from residential areas.
- 3.6 At planning application stage, both types of SuDS (infiltration or attenuation) are requested as part of the validation process and if this is not possible or feasible, reasons for not utilising them must be provided where alternative solutions are proposed as part of a sustainable drainage strategy. The requirement is further that surface water drainage works are designed in accordance with Non-Statutory Technical Standards for Sustainable Drainage Systems to ensure proper drainage and to manage the risk of flooding and pollution.

Social inclusion and equality

- 3.7 In line with the Our Manchester vision as a city we are striving to be more inclusive and equitable. We know that the health, wealth, and well-being of everyone in society are fundamental indicators of the success of a city. Recent research by the Environment Agency, the UK's leading environmental public body, suggests that people who are living in areas with higher levels of deprivation may be more vulnerable to the cumulative effects of environmental inequalities than others. Manchester is a complex and diverse city composed of many intersecting communities with contrasting characteristics. Communities and individuals will be affected by climate change in different ways, and some people will have greater capacity to respond than others.
- 3.8 The refresh of the Implementation Plan has made use of evidence gathered through The Nature of Manchester work. This will assist our thinking where, down to ward level, the key environmental risks and challenges are in the city. At a detailed level, Tree Action MCR, the citywide £1million tree-planting programme is prioritising the areas in most need of localised tree planting based on levels of existing street tree cover. This will increase the council's managed street tree numbers by 10% in around two years, one of the biggest, most focused local authority-driven street tree-planting schemes undertaken in recent years. More detailed information is provided in paragraph 5.8 and Section 6 of the report.

Green Spaces and Covid

- 3.9 In late 2019, a community consultation was undertaken by the Wildlife Trust, which demonstrated the importance of nature in people's lives. The 'My Wild City' consultation received over 2,000 responses and provided a significant statement highlighting the role nature plays for people in Manchester. Following March 2020, the importance of parks and green spaces grew even more.
- 3.10 During the first lockdown, between April and May 2020, the Wildlife Trust undertook a further survey, Valuing Nature Nearby, in which over 1,000 people took part. The findings reinforced the original study, reporting the increasing value people placed on parks and green spaces. It also illustrated how parks, green spaces, gardens and river valleys were vital to people's health and wellbeing in a time of uncertainty and national crisis.
- 3.11 Parks in Manchester recorded a 30% increase in usage during 2020 and into 2021. Green space which has always played a key role in the city was now even more important. As a city we have announced a major park development programme, which will help improve these key green assets even further. This is also reflected in the refreshed Implementation Plan.

Policy

- 3.12 Changing policy both at national and local level is also changing the context for our Green and Blue Infrastructure Strategy. The new Environment Act 2021 (England and Wales) is set to create a new governance framework for the environment and will act as an enabler for priorities within a national 25 Year Environment Plan. The Act will make 10% biodiversity net gain for most new development a statutory requirement with further detail subject to regulations still to be confirmed. How this will be addressed and options for securing a net gain within the city are currently being explored and will be embedded in the refresh of the local plan. This requirement will sit along-side and complement other policy outcomes based around key sustainability principles.
- 3.13 Places for Everyone is a long-term joint development plan of nine Greater Manchester districts (Bolton, Bury, Manchester, Oldham, Rochdale, Salford, Tameside, Trafford, and Wigan) for jobs, new homes, and sustainable growth. Published by the GMCA, it includes policies on green infrastructure and biodiversity net gain. The plan was submitted for examination on 14 February 2022 with an expected adoption of the plan in 2023.
- 3.14 Our existing local plan (the Core Strategy 2012–27) sets out Manchester's approach to development and is used to guide decisions on planning applications across the city. Work has now also begun to look at what our new local plan should cover to meet our needs and ambitions for the next 15 years. There has always been a focus of delivering key outcomes for the city, new jobs and new homes, we also need to ensure future growth supports our ambition to be a zero-carbon city by 2038 or before, and to be a green,

climate-resilient city. In the context of a successful city providing homes and jobs, the new Local Plan will also provide an opportunity to update our policy approach around Green Infrastructure (GI).

4.0 The Green and Blue Infrastructure Strategy Action Plan refresh

- 4.1 The intention of updating and refining the Implementation Plan is not just to build on the success to date, but to recognise changes that will add value and build even more momentum around the GI agenda for many years to come.
- 4.2 The overarching vision remains the same but has been condensed to be more impactful. The four key Objectives remain the same, except for Objective three now reported as “Improving access and connectivity for people and wildlife,” reinforcing the biodiversity value of improved connectivity. The original twenty-six headline actions have been streamlined to eighteen and integrated to avoid duplication and improve impact. This makes it easier for organisations, stakeholders and our partners to see where their commitments can fit in and add value. Many of the headline actions and associated projects are cross-cutting across several objectives, but all will add to the city’s overarching climate resilience.

New Themes, New Evidence

- 4.3 It has always been recognised that since being published in 2015, the strategy will need to adapt to new priorities and emerging themes within the city’s green and blue landscape, particularly where a more detailed focus has been necessary. Bespoke, independent commissions have looked in much more detail at the city’s key green and blue assets. These include:

- Nature and Networks
- Biodiversity
- River Valleys
- Trees and Woodlands
- Gardens
- Health and Ageing

More details on all the above can be found in the Implementation Plan Refresh attached.

- 4.4 The robust evidence gathered through these projects allows for more informed decision-making, it has allowed for learning from best-practice approaches and developing new partnerships. We know that our green and blue spaces are important in improving the city’s resilience to climate change. We also need to evaluate how these spaces may themselves be subject to climate change and how people may increasingly use these areas to cope with challenging weather conditions. Convincing evidence has made the case for deploying nature-based solutions in appropriate locations but we also need to understand how and where they can best be deployed. New evidence supporting the new Implementation Plan, which is doing this, includes the following two projects.

Greater Manchester (GM) IGNITION Project

4.5 This project, backed by €4.5million from the EU's Urban Innovation Actions (UIA) initiative, brings together twelve partners from local government, universities, non-governmental organisations (NGOs) and business. The aim is to develop the first model of its kind that enables major investment in large-scale environmental projects that can increase climate-resilience. The project has already delivered cutting-edge research that will shape Manchester's own green and blue landscape. IGNITION has so far provided:

- A **baseline assessment of green infrastructure** for the city
- A **Living Lab** of real-life nature-based solutions (NBS), such as green walls, green roofs, rain garden and trees with sustainable drainage systems, to demonstrate their function, value and cost effectiveness.
- The development of a new **Planning Support Tool** to aid decision making and the creation of an extensive research online library.

GrowGreen Project

4.6 GrowGreen has been a five-year €15million European Commission-funded project that aims to create climate and water-resilient, healthy, and liveable cities by investing in nature-based solutions (NBS). GrowGreen has provided the city with vital support, guidance, and promotion, helping us to commission bespoke, necessary evidence such as the Our River Our City work referred to later in paragraph 5.2.

4.7 The Green Cities Framework was created through the GrowGreen Project to provide a roadmap to a Green Infrastructure strategy. It was developed through a shared understanding of best practice and expert knowledge brought by different partners. It has allowed us to sense check and refresh our new action plan.

4.8 The GrowGreen Project enabled the creation of the **West Gorton Community Park**, which opened in June 2020, in the middle of the global pandemic - a testament to the city's commitment and determination around the climate change agenda and the culmination of a ten-year regeneration programme for this area. The park won a Landscape Institute Award and Golden Pineapple Design Award in 2021. It stores water from extreme weather events and uses surface water run-off for irrigation. The impact of this is continuing to be monitored by the university partners and will help our understanding of how to replicate this approach elsewhere.

5.0 G&BI Implementation Plan – 2021 Delivery highlights by Objective

5.1 **Objective 1:** The first of the four objectives of the Strategy is **to improve the quality and functionality of G&BI across the city.**

Delivery Highlights:

- Successfully launched the Our Rivers, Our City project.

- Successfully launched the £12.5 million Park Development Programme
- Delivered first phase of Tree Action MCR
- Continued delivery of Managing Manchester's Trees Project
- Continued development of a new Biodiversity Strategy for Manchester through My Wild City project (See paragraph 5.20)

Our Rivers Our City

- 5.2 This initiative was funded through the EU GrowGreen project. It began in April 2020 and the strategy was successfully launched on 7th December 2021. It is already yielding results, providing the strategic support for Groundwork's successful £1million Resilient River Valleys bid. It aims to increase our understanding of the role of Manchester's rivers, with a particular focus on the Irk, Medlock and Mersey and their tributaries, in terms of flood resilience, recreation, biodiversity and accessibility. The project has been led by the Council and a wide range of stakeholders. It aims to re-energise some of the city's most important natural spaces, making them 21st-century assets, drivers for growth, and places where people and nature can thrive. As well as an overarching strategy for the city, individual long-term action plans have been co-developed for the Irk, Medlock and Mersey Valleys. To find out more, all documents can be found via the link here: <https://growgreenproject.eu/rivers-city-strategy-revitalising-manchesters-river-valleys-urban-waters/>

Park Development Programme (PDP)

- 5.3 This £12.5 million five-year programme of tailored investment opportunities will be delivered by a newly established **Park Development Programme (PDP)** Team, established to work within the Park's service in collaboration with community groups and a range of partner organisations. The aim is to develop and deliver (through feasibility and business cases) investment to meet the aims of the Park Strategy and to close the gap in income and expenditure across the programme. The PDP programme is set out over a four-year period up to 2024/25 and is split into four workstreams, as indicated below.
- 5.4 Workstream 1 - Parks in Partnership is about raising standards and improving the customer/family experience across our Parks. This workstream provides up to £30k per ward for works in a local park, river valley open space or allotment, with a total of £960k available citywide. Launched in April 2021, applications for rounds one and two are now being processed in partnership with stakeholder groups, neighbourhood officers and local members. There have been nearly ninety applications with a wide variety of requests from park infrastructure (benches, bins, paths, signs) to new play and sports equipment, and environmental improvements. The programme will be completed during Spring 2022.
- 5.5 Workstream 2 includes ten mid-scale projects up to £250k, totalling £2.5M and seeking a proposed return on investment of between 2% to 6%. There are currently two live projects:

- Wythenshawe Hall Operational Office - £211k, commenced on site in November 2021 and is due to be complete this month.
- Gatley Brook Embankment - £116k, a design and cost plan to develop a design solution (approved by the Environment Agency) to repair damage to the brooks embankment to prevent flooding adjacent areas. This will have a positive impact on preventing flooding within Sharston.

5.6 Workstream 3 includes four largescale projects up to £1M, totalling £4M, with a proposed return on investment of 7% to 9%. There are currently two live projects:

- Wythenshawe Park Track Cabins - £530k, anticipated to be completed in spring 2022.
- Wythenshawe Park Cycling Hub - £1.55M (inclusive of £500k match funding from British Cycling), currently projected for completion in June 2022

5.7 Workstream 4 includes two flagship projects up to £2.5M, totalling £5M, with a proposed return on investment of 10%, Currently there are two workstream 4 proposals in the early stages of development at Heaton Park with ongoing feasibilities and a soft market test completed to better inform a future business case for consideration through due process. These include the proposed introduction of a new family attraction based at the lakeside centre hub and overflow car park enhancements to allow for multi seasonal use, this is restricted currently when the weather is poor.

Tree Action MCR

5.8 This £1million capital programme is delivering the most focused programme of street tree-planting undertaken in recent years. All wards have been or are in the process of being surveyed for new street tree planting. 8 parks are receiving Beacon trees (large trees of note), including an avenue of 18 Oak trees which were successfully planted in Heaton Park on Monday 13th December as part of the Queens Green Canopy Initiative more details here: <https://queensgreencanopy.org/>) This was attended by Cllr Tracey Rawlins and the Deputy Lieutenants of Greater Manchester. New Covid Beacon Trees have also been planted in Manchester parks and cemeteries, as a legacy of the pandemic. The community Orchard Project is ongoing; it delivered four new Community orchards in 2021 and will focus on North Manchester in 2022.

Managing Manchester's Trees

5.9 Manchester is leading the way with the level of detail provided in this authoritative look at the way the city's treescape has evolved, how it functions and how it can be improved. An assessment of the treescape with this level of detail has never been undertaken before in the UK. Work began in 2020 and will be completed by Spring 2022. Delivered by environmental consultants The Environment Partnership (TEP) and City of Trees, in partnership with the Council, there are three elements to the work:

- **Evolution** – an informative 100-year look back at how the city’s treescape and its neighbourhoods have evolved over time, referencing population decline and growth, and reflecting the changes across the city’s landscape.
- **Function** – consideration of how we look after the thousands of trees we already have, and cater for constant challenges such as pests, disease and climate-resilience, e.g. Ash Dieback, including options for better and sustainable treescape management.
- **Opportunity and Capacity** – using the most detailed data sets on tree cover ever provided, information has been mapped down to ward-level, providing an insight into tree capacity and identifying where and how tree canopy could be increased effectively, sustainably and appropriately. A separate tree mapping tool will allow us to work with communities on improving tree cover across Neighbourhoods.

5.10 **Objective 2:** The Strategy and Implementation Plan’s second objective is **to ensure that green and blue infrastructure is well integrated within new development.** This needs to happen at both the detailed, masterplan and strategic framework level.

Key highlights

- Embedding GI into policies and plans – Local Plan, Places for Everyone, Manchester Climate Change Framework (see paragraphs 3.12-3.14 for more background)
- Manchester Glade of Light
- Flagship development initiatives such as Victoria North and Mayfield continue at pace.

Glade of Light

5.11 The Glade of Light is a £562,855.20 memorial commemorating the victims of the 22 May 2017 terrorist attack at Manchester Arena and has been accessible to the public since 5th January 2022, with an official opening ceremony scheduled for Spring. The Glade of Light was designed to be a living memorial, a tranquil garden space for remembrance and reflection. Its peaceful surroundings are intended as the setting for commemorative events in the city relating to the attack. It features a central white marble ‘halo’, and plants which grow naturally in the UK countryside have been selected to provide year-round colour and echo the changing seasons. 43 new trees were planted as part of this scheme. Around the anniversary, every year, the white flowers of a hawthorn tree planted at its centre will bloom. Located within the Medieval Quarter it has been designed to complement the wider areas regeneration.

Victoria North

5.12 This is the North of England’s biggest urban regeneration project, and the biggest renewal project Manchester has ever seen. With landscape at the

heart of the vision, jointly developed and funded by the Far East Consortium (FEC) and the City Council, the ambition is to create 15,000 new homes across 155 hectares and seven neighbourhoods over the next twenty years. At the heart of Victoria North will be the City River Park, which will cover 46 hectares of new and improved parkland. The park will vary in character, providing a diverse and active new recreational corridor for the community, including parks and smaller amenity spaces. Planning, design and consultation work continued in 2021, with physical works having already commenced.

Mayfield

- 5.13 The Council is working with partners to deliver a major new six acre city centre park as part of the Mayfield regeneration proposals. The Mayfield SRF area is adjacent to the Ardwick area and will be easily accessible by those who live and work in the area. In 2021, work began on site, which included the historic “daylighting” of a 400m stretch of the River Medlock, making this part of the river visible again for the first time in nearly 100 years. The park is scheduled to open in September 2022.
- 5.14 **Objective 3:** The third overall objective of the G&BI Strategy is **to improve accessibility to green space within and beyond Manchester.**

Key Highlights

- Work continues on delivering the Bee Network travel Routes
- £1million secured to deliver the Resilient River Valley Programme

Bee Network travel Routes

- 5.15 Almost £30million is committed to Bee Network travel route improvements in Manchester. This network improves accessibility, via active modes of travel to facilities across Manchester including our open spaces. Projects include:
- Chorlton Cycleway - 5km route south from the city centre to Chorlton. This scheme is split into four areas. Area 1 (Stretford Road/Brooks Bar) is now complete. Works are underway on Area 2 (Upper Chorlton Road) and in Area 4 (Barlow Moor Road) where they are nearing completion. In Area 3 (Manchester Road) works commencing in December 2021 in 3a but designs are still to be finalised in 3b.
 - Deansgate - Involving part pedestrianisation of Deansgate. Traffic Regulation Orders (TROs) are currently being advertised for the northern end of Deansgate, Parsonage and King Street. Further TROs for a variety of elements are to be advertised in the coming months.
 - Triangle - A connected route around the city centre. Changes to the design are being worked on along with modelling work with consultation expected in February 2022 if sign off is agreed
 - Wythenshawe Cycleway – A route connecting through Wythenshawe. A road safety audit is currently underway on the current design to inform how the scheme should progress.

- GM Cycle Hire – A new cycle hire scheme, with the first phase including roll out on Oxford Road in Manchester. Initiation of the project is being undertaken with rollout expected through 2022.

Resilient River Valleys Programme

5.16 This ambitious two-year, near £1million programme will focus on delivering nature-based solutions to enhance the climate resilience of our river valleys. It will help improve access to, along and across our river valleys for people and nature. This will be achieved using sustainable management and new employment and training opportunities identified in the Our Rivers Our City strategy. Orchestrated by Groundwork Greater Manchester, the successful partnership bid will use funds from Defra and Heritage Lottery's Green Recovery Challenge Fund. In addition to delivering a programme of physical work across a network of sites, it will:

- Create new jobs within delivery teams and for young people recruited through DWP Kickstart and NCS Youth Corps initiatives (nine new roles, six urban forestry assistants at City of Trees, and 32 roles for young people)
- Deliver a programme of community engagement work to connect people with nature-based activity within the river valleys, and increase involvement in volunteering and maintenance of urban green space
- Develop and deliver new training modules relating to NBS for staff, people on employment programmes, and community members, as well as specific training courses and activities relating to managing green infrastructure for community and Friends of Groups.

5.17 **Objective 4:** The fourth objective is **to promote a wider understanding of the benefits that G&BI bring to residents, the economy, and the local environment.**

Key Highlights

- The refresh of the G&BI Strategy Implementation Plan
- Ward Climate Change Plans
- Work continues on the development of a new Biodiversity Strategy for the City
- Manchester became the first major City in England to sign the Edinburgh Declaration
- New Nature Recovery Network community engagement and wildlife recording project in North Manchester
- My Wild City was a commended finalist in the Knowledge Exchange Category of the 2021 Chartered Institute for Ecology and Environment Management (CIEEM) Awards.
- West Gorton Community Park won a Landscape Institute Award and Golden Pineapple Design Award in 2021 (see paragraph 4.8)

G&BI Implementation Plan Refresh

- 5.18 A key output in 2021 has been the refresh of the new Green and Blue Infrastructure Implementation Plan, with over £150m worth of expected environmental improvements that will support the Our Manchester Vision over the coming five years. This raft of new GI information, evidence, strategies and plans will also shape climate resilience and environment policy within the Local Plan currently in development.

Ward Climate Change Plans

- 5.19 Working with communities, newly appointed Climate Change Officers have begun delivering ward-based Climate Change Action Plans with GI featuring prominently. Working with Manchester Climate Change Agency, creative engagement specialists Hubbub delivered an exciting year long programme of immersive environmental activity, including the “In Our Nature” Pop up Shop in the heart of the City Centre.

Biodiversity Strategy

- 5.20 Work continues on the development of a new Biodiversity Strategy for Manchester, which is being led on by the Lancashire Wildlife Trust under the My Wild City Programme. A new Biodiversity Action Group, consisting of key stakeholders, statutory bodies and academic institutions has been established and is helping to oversee strategy development. The new Strategy project will bring a citywide focus to the idea of a people’s nature recovery network and includes developing around 75 new species action plans across five broad habitat areas in the city. The document will be produced and tabled at a future Scrutiny Committee.

Edinburgh Declaration

- 5.21 Manchester has become the first major City in England to register its concern about Biodiversity loss by signing the Edinburgh Declaration, which encourages Cities globally to support the delivery of a new Global Biodiversity Framework.

North Manchester Nature Recovery Network

- 5.22 Raising the awareness of the benefits of G&BI, in 2021, despite the challenges we have all faced over the last two years, innovative and creative work was undertaken by partners in delivering engagement activity across the city. The Wildlife Trusts delivered a programme of events and activity in North Manchester as part of the North Manchester Nature Recovery Network, working with communities to improve habitats and record species.

6.0 Tree Action Plan – Highlights and Update

- 6.1 Manchester’s trees continue to be managed in line with Manchester’s Tree Management Principles which can be found at

https://www.manchester.gov.uk/downloads/download/7022/tree_management_principles This provides a useful starting point for all responses to queries concerning how Manchester looks after its trees.

- 6.2 In 2021 significant work was undertaken on developing a new fundamental appraisal of the City's tree resource. This work (outlined above as Managing Manchester's Trees) will shape the development of a new Tree and Woodland Action Plan in 2022.
- 6.3 In total 4286 trees were planted in 20/21, including five orchards and 2036 hedge trees. The Tree Action MCR planting programme planted 1008 trees over the same period. Over 1200 are expected to be planted in 2021/22. As part of this, working with City of Trees, the City Council secured a further £150,000 for additional tree planting through Government and Heritage Lottery Fund's Urban Tree Challenge fund.
- 6.4 The City's Arboricultural team have been instrumental in delivering a dynamic assessment of all the City's Neighbourhoods in terms of potential for new tree planting on Manchester verges and along some streets and highways. This has been systematically undertaken by the team, looking at wards with the least street tree cover first, using a suite of tree species specially chosen for their climate resilience and biodiversity value.
- 6.5 Over the course of the year, the council's tree officers continuously liaised with Neighbourhood teams, Climate Change officers, Ward councillors and community representatives to understand local needs and priorities.
- 6.6 This collaborative approach has moulded the Tree Action MCR planting programme. It will lead to a 10% increase in the numbers of MCC managed street and highway trees in less than two years.
- 6.7 As part of Tree Action MCR, four new community orchards were planted with community support and training delivered by the Orchard Project in:
- Delamere Park, Openshaw
 - Platt Fields Park, Fallowfield
 - Mersey Banks Fields, Chorlton Park
 - Kenworthy Wood, Northenden
- 6.8 Five new tree preservation orders (TPOs) were also declared in 2021, taking the overall number to 404.

7.0 Future Priorities

- 7.1 Work will continue in delivering the four objectives of Manchester's Great Outdoors: Our Green and Blue Infrastructure Strategy. Future reporting will align with the headline actions contained within the refreshed Implementation Plan. Projects will continue to include work undertaken by the council, in collaboration with its many stakeholders and projects that are delivered directly and independently by those stakeholders.

7.2 The priorities for 2022 will focus on the following:

- The refresh of the Tree and Woodland Action Plan using the evidence that has been gained through the work on the Managing Manchester's Trees Commission.
- The continued roll out of phase 2 of Tree Action MCR, including work to ensure that all the young trees are thriving and consideration of the potential to continue the programme through external funding sources.
- The continued delivery of the flagship projects at Victoria North and Mayfield, leading to a total of 52 hectares of new and improved open space and parkland.
- The continued link with the Manchester Climate Change Action Plan to help embed the learning from projects such as the GrowGreen enabled West Gorton Community Park and IGNITION. Using the evidence from these demonstration projects, the ability to consider appropriate nature based solutions early in the design stage of projects will help create a more climate resilient city.
- The presentation of the new Biodiversity Strategy to Scrutiny and its subsequent adoption. This will use information gathered through My Wild City. It will link with the Local Nature Recovery Strategy work being implemented at Greater Manchester level, with a more local, Manchester specific focus.
- The preparation of a draft Local Plan with strengthened environmental policies that draw on the increased up-to-date evidence created by the studies, such as the Our Rivers Our City project, that have been undertaken as part of the Green and Blue Implementation Plan.

8.0 Recommendations

8.1 Recommendations appear at the front of the report.

Objective 1: Improve the quality and function of green and blue Infrastructure to maximise the benefits it delivers. Owner: Fiona Worrall, Neil Fairlamb

**Our Manchester links: A7 - Collectively improve our health and wellbeing and be more active as adults and children
 A11 - Be known for high life-quality, better green spaces and world-class sport,leisure and culture.
 LL5 - Improve the quality of parks, green spaces and waterways, and incorporate more into new developments.**

| | Headline Action | Action | Stakeholders | Location: N,S,C,CC | Timescale | Actions from April 2021. |
|---|----------------------------------------------------------------------------------------------------------------------------------------------------------------------------------------------------|---------------------------------------------------------------------------------------------------------------------------------------------------------------------------------------------------------------------------------------------------------------------------------------------------------------------------------------------|--------------------|-----------------------|-----------|--------------------------------------------------------------------------------------------------------------------------------------------------------------------------------------------------------------------------------|
| 1 | River valleys and canals: continue to invest in the river valleys and canals to provide attractive settings for residential communities, leisure and recreation, health, and biodiversity benefits | EU Water Framework Directive in Manchester: deliver a programme of citywide river and canal projects to improve water quality, reduce flood risk and improve biodiversity. To include: - Delivery of the Manchester elements of the €20million Environment Agency Northwest River Basin Management Plan LIFE project- The Natural Course | MCC, EA | N, S C, | 2015-22 | Continued work on the River Valley Strategies for Manchester. The Our Rivers Our City, delivered by a consortium led by TEP, Groundwork the Rivers Trusts and VIVID Economics. The Strategy was launched on December 7th 2021. |
| | | Medlock Valley Project and Medlock Restoration Project: to improve access to the river valley, water quality, biodiversity and use by local people. To include: - Development of Strategy for lower Medlock and ongoing restoration options | GW, MCC, EA | C/CC | 2015-22 | Outline Medlock masterplan integrated into Our Rivers our City. Work commenced on the re naturalisation of a 400m stretch of the Medlock as part of city the centre Mayfield development. |
| | | Irk Valley Project: to improve access to the river valley, water quality, biodiversity and use by local people. | GW, MCC, EA | N/C/CC | 2015-22 | Outline Irk masterplan integrated into Our Rivers Our City, and also into the wider catchment Bringing the River Irk to Life project (BRIL) |
| | | Moston Brook Project: to improve access to the river valley, water quality, biodiversity and use by local people. | MCC, OMBC, GW, LWT | N | 2015-22 | Ongoing community engagement and public events programme - integrated into the Our Rivers Our City work |

| | Headline Action | Action | Stakeholders | Location: N,S,C,CC | Timescale | Actions from April 2021. |
|---|--------------------------------------------------------------------------------------------|------------------------------------------------------------------------------------------------------------------------------------------------------------------------------------------------------------------------------------------------------------------------------------------------------------------------------------------------------------------------------------------------------------------------|--------------|-----------------------|-----------|------------------------------------------------------------------------------------------------------------------------------------------------------------------------|
| | | Mersey Valley Partnership: MCC and RSPB partnership to develop and deliver a new vision and investment plan for the Mersey Valley, to improve access, usage, biodiversity. To include: - Development of Strategic vision for Mersey Valley | MCC, RSPB | South | 2020-22 | Outline Mersey masterplan integrated into Our Rivers Our City work. RSPB have recruited a new engagement role which will support work in the Mersey Valley. |
| | | The Canals and Rivers Trust to deliver the Manchester and Pennines Waterways Partnership Vision to improve the Ashton and Rochdale Canals within the city and to improve connections to surrounding areas. | CRT | N/C/CC | 2021 | Ongoing. Capital works secured for City Centre Rochdale Canal improvements, including new £60,000 Biomatrix installation, plus new consultation around the undercroft. |
| 2 | Enhance existing parks to maximise their potential in making Manchester a World Class City | Continue to implement the Manchester Parks Strategy, co-ordinating and creating management plans for individual parks, taking into account existing plans and information. Including: 1. Analysis of the social, economic, cultural and environmental role of each park 2. Promotion of equality and social cohesion to meet the aspirations of surrounding communities 3. Plans for financing and resourcing | MCC | Citywide | 2019-22 | Ongoing. Complete 15 plans in the first year and a further 35 plans by the end of year 3, giving a total of 50 Park Plans. |
| | | Bring forward investment cases for sites with the greatest possible income opportunities. Priorities include: 1. Increasing income generation 2. Improving visitor experience 3. Progressing towards achieving the Manchester Quality Standard 4. Investing in parks more suited to holding larger events as shaped by individual Park Plans 5. Reducing the amount of public subsidy needed. | MCC | Citywide | 2019-22 | New Park Development Team established to deliver new £12.5 Million Park Development Programme. |

| | Headline Action | Action | Stakeholders | Location: N,S,C,CC | Timescale | Actions from April 2021. |
|---|------------------------------------------------------------------------------------------------------------------------------------------------------------------|----------------------------------------------------------------------------------------------------------------------------------------------------------------------------------------------------------------------------------------------------------------------|-------------------|-----------------------|-----------|-------------------------------------------------------------------------------------------------------------------------------------------------------------------------------------------------------------------------------------------------------------------------------------------------------------------------------------------------------------------------------------------------------------------------------|
| | | Capital programme of improvements agreed | MCC | Citywide | 2020-25 | Relaunched in 2021 as £12.5 million park development programme. |
| | | Angel Meadow, Victoria North | MCC(Parks) FEC | N | 2019-22 | Capital sum obtained from developer of 'Meadowside' development (FEC) of £150k to be spent on upgrading park over next 2 years. Led by MCC Parks. From 2021/2022 estate charge will begin to be collected by MCC from new dwellings which will go towards park maintenance/management. At £100 per annum per plot this will eventually provide an annual maintenance budget of c.£75,000 when development fully completed. |
| 3 | Enhance existing and introduce new GI within large estates and land holdings e.g. colleges, registered housing providers, cemeteries, universities and hospitals | Registered Housing Providers' to integrate GI as part of business plans. To include: - Research to identify best practice amongst the city's Registered Housing Providers - Establish a mechanism(s) for sharing best practice and supporting further roll-out | RHPs | Citywide | 2021-22 | RHPS under the leadership of Southways relaunched the Providers GI group in 2021. |
| | | University of Manchester – integrate GI as part of the development and delivery of the £1bn UoM estate and landscape masterplan. To include: - UoM GI Strategy including - Biodiversity Master Plan - Green Roof Green Wall policy | UoM | C/CC | 2015-22 | Ongoing. Lanscaping plan delayed due to Covid |
| | | Nature based solutions via H2020 EU - GrowGreen | MCC | C | 2017-22 | West Gorton Community Park delivered. Subject to 5 years post completion monitoring. Additional funding has been secured to develop a new Friends of Group which the Groundwork Trust are leading on. |

| | Headline Action | Action | Stakeholders | Location: N,S,C,CC | Timescale | Actions from April 2021. |
|---|------------------------------------------------------------------------------------------|-----------------------------------------------------------------------------------------------------------------------------------------------------------------------------|--------------------------------------------------|-----------------------|-----------|--------------------------------------------------------------------------------------------------------------------------------------------------------------------------------------------------------------------------------------------------------------------------------------------------------------------------------------------------------------------------------------------------------------------------------------------------------------------|
| | | Manchester University NHS Foundation Trust | MUNHSFT | Citywide | 2017-22 | Ongoing. Following the merger between the Central Manchester and South Manchester Hospital Trusts there will be dialogue to assess progress and opportunities for managing the hospital estates to increase the value of GI |
| 4 | Schools: enhance school grounds for environmental education and biodiversity | Lancashire Wildlife Trust to deliver £66,000 Forest Schools project in North Manchester | LWT | N | 2021-22 | Ongoing. Further funding secured for 2021. |
| | | BITC SuDS and Schools project development as part of IGNITION GM £5million bid | MCC, BITC, GM | Citywide | 2019-2022 | NEW GI Baseline has been delivered for Manchester. Work is ongoing to deliver a planning support system - GM GI Explorer. A new Living Lab in Salford University highlighting NBS was opened in June 2021. |
| | | Protecting Playgrounds - monitoring planning and installation of this air quality and schools project | | Citywide | 2018 - 21 | Completed. Optimum tree species for roadside hedge planting as buffer to particulates is established as Western Red Cedar. Still awaiting final results. |
| 5 | Trees and woodlands: effective and appropriate tree and woodland management and planting | Aim for at least 2,500 new trees per year, to be planted in line with the Manchester Tree Action Plan target, by a range of organisations and the City of Trees initiative. | MCC, CoT, RPs, individuals, developers, COM, CoT | Citywide | 2015-22 | Ongoing 2015/16 - 2960 trees planted, including 35 orchards plus 1080 hedge trees 2016/17 - 2129 trees planted, including 6 orchards and 832 hedge trees 2017/18 - 3348 trees planted, including 4 orchards plus 1585 hedge trees 2018/19 - 2994 trees planted, including 3 orchards and 582 hedge trees 2019/20 - 9817 trees planted, including 6812 hedge trees 2020/21 - 4286 trees were planted including five orchards and 2036 hedge trees |

| | Headline Action | Action | Stakeholders | Location: N,S,C,CC | Timescale | Actions from April 2021. |
|---|--------------------------------------------------------------------------------------------------------------------|------------------------------------------------------------------------------------------------------------------------------------------------------------------------------------------------------------------------------------------------------------------------------------------------------------------------------------------------------------------------------------------------|---------------------|-----------------------|-----------|--------------------------------------------------------------------------------------------------------------------------------------------------------------------------------------------------------------------------------------------------------------------------------------------------------------------------------------|
| | | Wythenshawe Woodlands – City of Trees (formerly Red Rose Forest), Groundwork and Council project to deliver biomass products, biodiversity improvements, skills, training and volunteering opportunities. (Heritage Lottery Fund application re submitted June 2018). The project has been extended, after a successful bid to Green Recovery Challenge fund by CoT and Groundwork 2021-23. | CoT, MCC, GW | S | 2018-2022 | Restoration and revitalisation of three important historic woodlands in Wythenshawe through £182,900 HLF bid by CoT. Continued Community engagement and practical action across 3 Woodlands in Wythenshawe. New bid as part of green recovery challenge successful meaning more Wythenshawe woodlands will benefit from 2022. |
| | | Minimum of 4 new community orchards to be planted per year. | CoT, MCC, RHPs, CGs | Citywide | 2015- 22 | Ongoing 35 orchards planted in 2015/16 6 orchards planted in 2016/17 4 orchards planted 2017/18 4 orchards planted 2018/19 0 orchards planted 2019/20 5 orchards planted 2020/21 |
| | | Map known community orchards across the city | MCC CoT | Citywide | 2020-22 | Ongoing. Liasing with CoT and Urban Orchard Project. New programme of 8 community orchards established. |
| 6 | Community greening and community food growing: delivery of community led and focussed GI projects and food growing | Deliver £1million Real Food Wythenshawe community training and capacity building project. | RFW, GW, RHPs, MCC | South | 2018-21 | Completed. Delivery of citywide growing project including Real Food Wythenshawe. Funding has ended for RFW. |
| | | Promote RHS in bloom campaigns | RHPs, MCC | Citywide | 2015-22 | Ongoing 130 In Bloom awards citywide in 2015 126 In Bloom Awards citywide in 2016 166 In Bloom Awards citywide in 2017 154 In Bloom Awards citywide in 2018 152 In Bloom Awards citywide in 2019 154 In Bloom Awards citywide in 2021 |

| | Headline Action | Action | Stakeholders | Location: N,S,C,CC | Timescale | Actions from April 2021. |
|---|---------------------------------------------------------------------------------------------------------------------------------------|-------------------------------------------------------------------------------------------------------------------------------------------------------------------------------------------------------------------------------------------------------------------------------------------------------------------------------------------------------------------------------------|------------------------|-----------------------|-----------|-------------------------------------------------------------------------------------------------------------------------------------------------------------------------------------------------------------------------------------------------------------------------------------------------------------------------------------------------------------------------------------------------------------------------------------------------------------------------------------------------------------------------------------------------------------------------------------------------------------------------------|
| 7 | Gardens: protect and enhance private gardens | Southway Housing Trust to improve at least 2 local green spaces per year, using in-house expertise working with local communities | Southway Housing Trust | South | 2015-22 | <p>Creation of boundary hedge and planting of woodland canopy, coppice plots and understorey species on wide verge between Winterman's Road and Southern Cemetary on edge of Arrowfield Estate. All native species with biodiversity gain. Ad hoc planting with local volunteers did take place but most undertaken by contractors.</p> <p>Creation of wildflower area in the Community Zone of Green Flag site, implemented during community day working with Groundwork as part of Green Recovery Challenge phase 1. Seeding done by residents following site preparation by Groundwork. NB 2 MCC ward cllrs took part.</p> |
| | | Integration of My Back Yard (MMU partnership research project) into new G&BI Strategy Implementation Plan | MCC MMU RHPs | Citywide | 2019-22 | New GM wide My Wild Garden Campaign established, using the My Back Yard information. |
| | | Registered Housing Providers and partners, facilitated by Southway Housing Trust, to promote the importance of private gardens to residents and actions they can take to protect and enhance them, to include: <ul style="list-style-type: none"> • Creation of a forum to share best practice • Arranging 2 site visits per year to showcase best practice | RHPs, RA, MCC | Citywide | 2018-22 | RHPS re launched the Providers GI group in 2021. |
| 8 | Sites of Biological Importance (SBIs): increase the number of SBIs in active management to conserve, protect and enhance biodiversity | MCC to work with land owners and managers to increase the numbers of SBIs in active conservation management by 1-5% annually. (In June 2015 Manchester has 38 SBIs; 55% are in active conservation management). Report progress annually to DEFRA. | Landowners MCC, GMEU | Citywide | 2015-22 | 2021/22 62.16% of sites in active conservation management. 23 in active management, 14 not in active management. New SBI Management Plans for Boggart, Bank Bridge, Broadhurst, Painswick, Rose Hill. In progress -Clayton Vale ponds, Nan Nook and Gib Lane Woods, Sunbank, Harpurhey Reser's, Blackley Forest, and Baileys. |

| | Headline Action | Action | Stakeholders | Location: N,S,C,CC | Timescale | Actions from April 2021. |
|----|------------------------------------------------------------------------------------------------------------------------|-----------------------------------------------------------------------------------------------------------------------------------------------------------------------------------------------------------------------------------------------------------------------------------------------------------|---------------------------|-----------------------|-----------|--------------------------------------------------------------------------------------------------------------------------------------------------------------------------------------------------------------------------------------------------------------------|
| | | Map and survey SBIs to review current condition and identify opportunities for improvements. | MCC, Universities | Citywide | 2015-2022 | 4 SBIs assessed by UoM Students - Sunbank Wood Plan, Hazlitt Wood and Broadhurst Clough, Gibb Lane Wood |
| 9 | Local Nature Reserves: increase the coverage of LNRs in line with national guidance to 1 ha of LNR per 1,000 residents | Identify potential Local Nature Reserves or similar opportunities to reach target coverage of 1 hectare LNR per 1,000 residents in line with national guidance, over the 10 year lifetime of the Strategy – including Southern Cemetery and Broadhurst Clough as candidate sites and within Parks | MCC, NE, GMEU | Citywide | 2015-22 | Continued work towards this target in 2021 |
| 10 | Health and wellbeing: deliver GI projects with a particular focus on improving health and wellbeing | Pilot the prescription of GI-based preventative health activities such as health walks, volunteering and use of courses to up-skill long term unemployed with health/addiction issues, to deliver improved health outcomes, as an alternative/complement to traditional approaches and measure the impact | NHS, MCC, Universities | Citywide | 2015-22 | Ongoing. Delivery of a successful partnership project with University of Manchester, Public Health Manchester and MCC City Policy. The Phd work was completed in 2021. Successful extended funding will enable a focussed look at site usage around Victoria North |

| Objective 2 - Use appropriate green and blue infrastructure as a key component | | | | | | Owner : Julie Roscoe |
|--------------------------------------------------------------------------------|---------------------------------------------------------------|--------------------------------------------------------------------------------------------------------------------------------------------------------------------------------------------------|-----------------------------------------------------------------------|-----------------------|-----------|------------------------------------------------------------------------------------------------------------------------------------------------------------------------------------------------------------------------------------------------------------------------------------------------------------------------------------------------------------------------------------------------------------------------------------------------------------------------------------------------------------------------------------------------------------------------------------------------------------------------------------------------------------------------------------------------------|
| Our Manchester link: A14 - Be a beacon for sustainable design. | | | | | | |
| | Headline Action | Action | Stakeholders | Location: N,S,C,CC | Timescale | Actions from April 2021 |
| 1 | Embed new and existing GI as part of residential developments | Integrate high quality GI and appropriate SUDS, and a strategy for their long-term management, into major developments, from development framework and masterplan stage to delivery. To include: | | | | see below: |
| | | West Gorton Regeneration | MCC Guinness partnership/ Keepmoat Homes/ Communities Agency | Central | 2017-22 | Completed. West Gorton Community Park created. Launched Summer 2020. 2021 work being undertaken to establish a friends group and ongoing environmental monitoring. |
| | | Victoria North | MCC | North | 2019-24 | Ongoing successful bid for £51m Housing Infrastructure Fund, over the next 5 years: -Progress plans for a brand new 15 acre riverside park over 1400 linear metres as part of the Northern Gateway development. -Remove river wall culverts and weirs to mitigate flood risk -Address current poor water quality and aquatic habitats -Naturalise river banks to provide opportunities for riverside habitats and planting -Control invasive species such as japanese knotweed -introduce new walking and cycling routes through the lower irk valley -Introduce sustainable drainage solutions (suds) and swales within the park to control water run-off from new development |
| | | New Collyhurst Park -aligned to a phased delivery of new housing in Collyhurst | MCC | North | 2019-24 | Deliver the first phase of the New Collyhurst Park, which will connect Collyhurst to the City River Park via Sandhills Park and which will include: -water features providing sustainable drainage whilst referencing the existing watercourse beneath the ground; -play areas -lawn areas providing open space for sport and recreation. |

| | | | | | | |
|---|----------------------------------------------|--------------------------------------------------------------------------------------------------------------------------------------------------------------------------------------------------------------------|-----------------------------------------------|----------|-------------------|----------------------------------------------------------------------------------------------------------------------------------------------------------------------------------------------------------------------------------------------------------------------------------------------------------------------------------------------------------------------------------------------------------------------------------------------------------------------------------------------------------------------------------------------------------------------------------------------------------------------------------------------------------------------------------------------------------------------------------------------------------------------------------------------------------------------------------------------------------------------------------------------------|
| 2 | Embed GI as part of city centre developments | Where appropriate integrate high quality GI and appropriate SUDS, and a strategy for their long-term management, into major developments, from development framework and masterplan stage to delivery. To include: | | Citywide | 2015-2025 | (See below) |
| | | St John's public realm strategy | MQL (partnership between Allied London & MCC) | CC | 2019-21 | The Factory Public Realm spaces are Festival and Factory squares which will cost £5 m and include new tree planting and a riverside walkway. This work will be completed by March 2023. Allied London Properties will provide additional public realm with tree planting throughout the area as developments are completed over the next few years. Ongoing delivery of a place making strategy involving 13 acres of public realm with hard landscaped public realm, street trees, green walls and access to the riverside. |
| | | Great Jackson St SRF | Renaker, MCC, De Trafford | CC | 2018 - 22 | Ongoing. A new SRF was agreed in May 2018. The aim is to create a high quality residential neighbourhood underpinned by the creation of a high quality environment including areas of public space, shared/private amenity space and new pedestrian linkages and connections. The Owen Street development is on site, which includes a large riverside public open space. Two out of the four buildings have been completed with the landscape works commenced. Crown St proposals which include a large green public space have received planning permission. Subterranean car park is now under construction. Once constructed the public park element will be delivered on top. This will provide a mix of hard and soft landscaping. Deansgate Square public realm is now complete providing open views of the river, this space is also now activated by mix of retail and leisure amenities. |
| | | New Cross Public Realm Strategy and supporting Delivery Strategy | MCC and developer partners | CC | Approved Nov 2017 | Ongoing. Currently a monitoring group (which will include representatives from Planning, Highways and Public Realm) is being put in place to oversee the implementation of the strategy and ensure that all appropriate s106 contributions and / or improvements to be delivered via planning conditions are captured at the decision-making stage. This to ensure that necessary upgrades to the public realm are delivered in a coordinated and collaborative way to support the creation of a successful residential neighbourhood. |

| | | | | | |
|--|-----------------------|----------------------------------|-----|-----------|---------------------------------------------------------------------------------------------------------------------------------------------------------------------------------------------------------------------------------------------------------------------------------------------------------------------------------------------------------------------------------------------------------------------------------------------------------------------------------------------------------------------------------------------------------------------------------------------------------------------------------------------------------------------------------------------------------------------------------------------------------------------------------------------------------------------------------------------------------------------------------------------------------------------------------------------------|
| | Mayfield public realm | LCR, MCC, TfGM | CC | 2018 - 28 | The new 6.5 acre public park at Mayfield is close to completion, following approval of a £23m Getting Building Fund grant from Government. The main works will complete in March 2022, with formal opening in September 2022. Green and blue assets are developed through opening up the River Medlock as a feature through the park, as well as through the provision of flood defences. The park is designed to enable a wide range of uses, providing a large open lawn, children's play area, and a wetland meadow along the River Bank. 400 mature trees, comprising 43 different species are being planted, and around 60,000 new plants of 250 different species will be planted across the entire park. The sustainability of the Mayfield Park is further enhanced through the re-use of existing structures such as bridges and heritage features. The SRF includes a further 6.5 acres of public realm across the wider Mayfield site. |
| | Medieval Quarter | MCC, Cityco, Chethams, Cathedral | CC, | 2016 - 22 | The first phase of the Medieval Quarter public realm works opened in January 2022. This included a mix of hard landscaping and new planting/green infrastructure. This scheme also delivered the Glade of Light, a memorial to the Arena attack victims. As per the approved Masterplan there are plans for further phases however the CCG+I team along with key stakeholders including Manchester Cathedral are currently seeking funding opportunities to deliver these. |
| | Great Ducie Street | MCC and land owners | CC | 2022 - 25 | Development contributes directly to the city's G&BI Infrastructure Strategy, placing an emphasis on high quality place making. The area possesses natural assets, notably the River Irwell which offers a significant opportunity to create high quality public spaces. SRF approved in Aug 2018 includes high quality public spaces which will be delivered through a phased approach as part of future development. A key green space is proposed within the 'park place' character area. No development plans have yet been brought forward by landowners within this SRF area. |

| | | | | | | |
|---|---------------------------------------------------|---------------------------------------------------------------------------------------|--------------------------------------------------------------------|-------|-----------|------------------------------------------------------------------------------------------------------------------------------------------------------------------------------------------------------------------------------------------------------------------------------------------------------------------------------------------------------------------------------------------------------------------------------------------------------------|
| | | North Campus Strategic Regeneration Framework (ID Manchester) | UoM, MCC | CC | 2022 - 30 | This remains a longer term regeneration priority for the city. Due to the size and scale this will be phased over the next decade. Since the last update, the UOM (landowner), has appointed Bruntwood as their development partner. Bruntwood are now developing more detailed proposals in accordance with the approved SRF of which public realm and green infrastructure is a prominent feature. |
| | | Kampus | Henry Boot, Capital & Centric | CC | Complete | <p>Large site for retail and apartment development adjacent to the canal. GI elements integrated and delivered, including 25 mature trees.</p> <p>In Q4 2021 the majority of development at Kampus was completed with the site opening to residents and the general public. This includes a mix of high quality public realm and green infrastructure via planting throughout the scheme. The site also provides an interface with the adjacent canal.</p> |
| | | Manchester Science Park | MSP, MCC | CC | 2019 - 26 | The SRF for the MSP site was approved in 2019. This set out the aspiration to provide increased floorspace target at innovation and life sciences organisations facilitating increased high value employment opportunities. No detailed proposals have been brought forward by the owner of the science park. The ambition to provide enhanced GI and improved connectivity is captured within the framework. |
| | | Implementation of City Releaf City Centre opportunity mapping as opportunities arise. | MCC | CC | 2019-21 | Ongoing. |
| 3 | Embed GI as part of major employment developments | Airport City | Manchester Airport City Group, MCC, Plan.it and developer partners | South | 2012-27 | Ongoing development of international business destination, including offices, hotels and ancillary retail in a high quality environment. |

| | | | | | | |
|--|--|------------------------------------------------------------|----------------------------|----|-----------|---------------------------------------------------------------------------------------------------------------------------------------------------------------------------------------------------------------------------------------------------------------------------------------------------------------------------------------------------------------------------------------------------------------------------------------------------------------------------------------------------------------------------------------------------------------------------------------------------------------------------------------------------------------------------------------------------------------------------------------------------------------------------------------------------------------------------------------------------------------------------------------------------------------------------------------------------------------|
| | | Piccadilly Gardens | MCC | CC | 2022 - 25 | The City Council has launched an international design competition to redesign the existing wider Piccadilly area and has allocated £1.8 m to work a scheme up to detailed design. An announcement on a long list of design teams is expected in March 2022 to develop Concept Designs. The estimated costs of the scheme based on work undertaken at St. Peter's Square and works underway at Albert Square is circa £25 m. |
| | | Poland Street Zone (Back of Ancoats) Public Realm Strategy | MCC and developer partners | CC | 2022 - 26 | The draft Public Realm Strategy (PRS) was launched for consultation in January 2022. It builds on the Poland Street Zone Neighbourhood Development Zone study (2020), which sets out how approximately 1,500 new homes will be built in the years ahead. The PRS will guide the design and delivery of public realm in this area, helping to create a sustainable, safe and desirable neighbourhood that promotes walking and cycling. Soft landscaping and tree planting along new 'green streets' are key elements of the strategy, as is a revitalised Ancoats Green. The strategy will also help to ensure that a holistic approach to public realm is taken as schemes in this area come forward, including the Ancoats Mobility Hub which itself has a significant amount of soft landscaping. The PRS will go to Exec for approval in March 2022 following consultation. Delivery will be undertaken in various phases thereafter, subject to funding. |
| | | Lincoln Sq, Brazenose Street | MCC | CC | Complete | The site completed in December 2021. Some final elements of delivery are currently still being finished on site. This provides a high quality square in the heart of the city centre. Adjacent to this on Mulberry Street a secondary hard landscaped square (Mulberry Square) has been delivered linked to the Yotel hotel development which incorporates an assortment of planting improving public realm, hard landscape and street trees, enhancing the connection between Spinningfields and the Civic Quarter. |

| | | | | | | |
|---|------------------------------------------------------------------------|----------------------------------------------------------------------------------------------------------------------------------------------------------------------|------------------------|------------------|-----------|------------------------------------------------------------------------------------------------------------------------------------------------------------------------------------------------------------------------------------------------------------------------------------------------------------------------------------------------------------------------------------------------------------------------------------------------------------------------------------------------------------------------------------------------------------------------------------------------------------------------------------------------------------|
| | | Circle Square | Bruntwood | Central | 2015-21 | <p>The public realm opened to residents and the general public along which the surrounding residential and commercial development in 2021. The space is well used by those living in the surrounding apartments and VITA student accommodation. The scheme provides new links between First street, Oxford Road Corridor and the developing ID Manchester. The underground commercial units which sit under the primary public space are set to open in early 2022 which will further activate the space.</p> <p>There are 2 future commercial development plots still to be delivered which will include public realm consistent with the wider site.</p> |
| | | Eastern Gateway - Piccadilly/HS2 SRF | MCC, HS2, Network Rail | Central/ Ardwick | 2019-22 | <p>A draft new Public Realm Strategy for the Ancoats Green area was taken to the Executive in January 2022, and is now out to public consultation, with a view to receiving Executive approval for the final strategy in March 2022. We continue to work with HS2 to maximise the provision of high quality public realm around the station. New public realm is planned for Portugal Street East, with delivery due to start on site shortly. Further public realm plans for the Piccadilly SRF area will depend on the final design and programme for the HS2 station.</p> |
| | | Deansgate Ramada Hotel area | MCC | CC | Long term | <p>Work has started on site, the hotel is currently being delivered with completion expected in December 2022. The public realm and riverside route are linked to the residential and commercial development with demolition underway to facilitate this. We are now also looking at working collaboratively to deliver new public realm including planting along the stretch of Deansgate between Victoria Bridge Street and Blackfriars Street. This will allign with the wide Deansgate project.</p> |
| 4 | Retrofit new GI to existing buildings, particularly in the city centre | MCCA and partners to deliver a programme of events to promote GI retrofit to city centre building owners and developers, including showcasing existing good practice | MACF GI, UK GBC | Citywide | 2021 | <p>Ongoing. Continued liaison with development management and use of expertise within GBI Stakeholder Group where appropriate and as opportunities arise -</p> <ul style="list-style-type: none"> - Integration of Climate Adaptation - Delivery of Bruntwood BLOC smart green roof. |
| 5 | Embed GI as part of new schools and major refurbishment | Deliver 'water resilient places' pilot project | BITC, MCC | C | 2018-22 | <p>Appointment of part time 18 month post to develop opportunities for climate change adaptation. The aim of the project is to create a pipeline of projects suitable to be progressed through the funding stream established through the IGNITION project.</p> |

| | | | | | | |
|---|--------------------------------------------------------------------|---------------------------------------------------------------------------|----------|----------|---------|--------------------------------------------------------------------------------------------------|
| 6 | Establish temporary 'meanwhile' uses on sites awaiting development | Cityco and partners to develop stewardship and adoption of city centre GI | Cco, CRT | Citywide | 2021-25 | Continued consideration of the potential to improve sites for temporary GI use where appropriate |
|---|--------------------------------------------------------------------|---------------------------------------------------------------------------|----------|----------|---------|--------------------------------------------------------------------------------------------------|

Objective 3 - Improve connectivity and accessibility to green and blue infrastructure within the city and beyond Owner: Steve Robinson, Michael Marriot

Our Manchester links: A13 - Be on a path to being a zero-carbon city by 2050.
LL2 - Encourage walking, cycling and use of public transport, and continue to invest in infrastructure this requires

| | Headline Action | Action | Stakeholders | Location: N,S,C,CC | Timescale | Actions fro April 2021- march 2022 |
|---|--------------------------------------------------------------------------------------------------------------------------------------------------------------------------------------------------------------------|-----------------------------------------------------------------------------------------------------------------------------------------------------------------|--------------------------------------------|-----------------------|-----------|----------------------------------------------------------------------------------------------------------------------------------------------------------------------------------------------------------------------------------------------------------------------------------------------------------------------------------------------------------|
| 1 | River valleys and canals: enhance river valleys and canal tow paths to improve accessibility and use as active transport corridors | Maintain accessible routes though Irk valley and Moston Brook | RVIs, | North | 2015-22 | GW £1million Resilient River valleys bid was successful, and began in Nov 2021. |
| | | Develop Mersey Valley Strategy | MCC, RSPB | South | 2022 | New Our Rivers Our City work with integrated Mersey Valley Plan launched in December 2021. GW Resilient River Valleys project will continue in 2022 |
| | | River Valley Park along R Irk as part of Victoira North | MCC, FEC | CC, North | 2019-24 | Outline masterplan developed for Victoria North. BRIL (Bringing the River Irk to Life) Project delivered by Environmnet Agency in 2021. New Our Rivers Our City work with integrated Irk Valley Plan launched in December 2021. GW Resilient River valleys project will continue in 2022 |
| 2 | Green routes: greening transport routes (e.g. tramlines, footpaths, cycle routes, roads, rail corridors including disused), to encourage walking and cycling, reduce flood risk and provide corridors for wildlife | TfGM and partners to deliver the Green Corridor programme to encourage increased walking and cycling and measure the impact in terms of use and health outcomes | NHS, CoT, MCC, TfGM, GW, LWT, universities | Citywide | 2015-22 | Delivered with ongoing promotion. TfGM worked in partnership with MCC, CoT, the Ramblers Assoc and Living Streets to deliver Manchester's Green Trail (previously called Manchester's Green Corridor) - a walking circuit made up of 14 routes originally established in 2012. These routes connect many of the City's parks, woodlands and open spaces. |

| | Headline Action | Action | Stakeholders | Location: N,S,C,CC | Timescale | Actions fro April 2021- march 2022 |
|---|-----------------------------------------------------------|-----------------------------------------------------------------------------------------------------------------------------------------------------------------------------------------------------------------------------------------------------------------------------------------------------------------------------------------------------------------------------------------------------------------------------------------------------------------------------------------|--------------------------------------|------------------------|-----------|-----------------------------------------------------------------------------------------------------------------------------|
| | | Develop and agree an approach with Network Rail and TfGM to encourage the management of transport corridors, including train lines, as green and blue assets that can provide multiple benefits, including providing an attractive welcome to the city | NR, TfGM, MCC, CoT, GW, Universities | Citywide | 2021-23 | Ongoing. Integration of GBI interventions along Bee Network projects where possible. |
| | | Establish a programme of citywide SuDS retrofit and identify funding for delivery | MCC | Citywide | 2015-22 | Ongoing. Programme of Ordinary water course improvement and trash screen cleaning in progress. |
| | | Greater Manchester Growth Deal - Great Ancoats Street (between Oldham Rd and Pollard St). This project will reduce improve pedestrian access between the city centre and residential/commercial areas to the north west. It involves re-aligning existing, and introducing new pedestrian crossings, and enhancing the public realm, including the provision of a significant number of new trees; the trees will replace those lost through another Growth Deal scheme at Regent Road. | MCC / TfGM | City Centre and Fringe | 2020/21 | 70 new trees were planted as part of the project along Great Ancoats Street, with sustainable urban drainage systems. |
| 3 | Cross boundary working to improve access and connectivity | Link GI within the city with surrounding assets within GM, ensuring that strategic level approach to GI including accessibility is incorporated within the new Local Plan and GM Places for Everyone. | MCC, GMCA, | Citywide | 2015-22 | Continued collaborative working with GM Districts, through IGNITION project, Natural Course and Biodiversity Net Gain work. |

| | Headline Action | Action | Stakeholders | Location: N,S,C,CC | Timescale | Actions fro April 2021- march 2022 |
|--|--------------------------------------------------------------------------------------------|------------------------------------------------------------------------------------------------------------------------------------------------------------------------------------------------------------------------------------------------------------------------------------------------------------------------------------------------------|--------------|-----------------------|----------------------|--------------------------------------------------------------------------------------------------------------------------------------------------------------------------------------------------------------------------------------------------------------------------------------------------------------------------------------------------------------------------------------------------------------------------------------------------------------------------------------------------------------------------------------------------------------------------------------------------------------------------------------------------------------------------------------------------------------------------------------------------------------------------------------------------------------------------------------------------------|
| | | <p>Continued support and promotion of Trans Pennine Trail (TPT) initiative</p> <p>MCC works with the central TPT team at Barnsley on governance, overall finance, management, marketing etc, which includes an annual payment by MCC of around £4000. MCC works with other GM LAs on the route on cross-boundary matters, meeting 3 times a year</p> | MCC, TPT | S | 2015-22 | The TPT runs across the north of England from Southport to Hull and beyond. It passes through Manchester along the Mersey valley. The past year has seen larger than normal user numbers, mainly people who live nearby encouraged to go out locally during lockdowns. Various events have been held, including an ultra-Marathon from Old Trafford to Liverpool via Chorlton Water Park, and a half Marathon from Stockport to Didsbury. The annual monitoring exercise has been undertaken by Council staff. This identified issues with signage and surfacing. Initial scoping work has begun to correct these issues, in partnership with Trafford Council and Highways England. Undergrowth has been cut back at East Didsbury alongside the Metrolink to keep the path clear for use and this is scheduled to take place twice a year in future. |
| | Use active and sustainable transport to access green infrastructure in the city and beyond | Chorlton Cycleway. Proposed, largely segregated cycleway between Chorlton and City Centre. This will improve access from the City Centre to the Mersey Valley and the TPT through the Hardy Lane corridor | MCC | S | Construction 2021-22 | Chorlton Cycleway - 5km route south from the city centre to Chorlton. This scheme is split into 4 areas. Area 1 (Stretford Road/Brooks Bar) is now complete. Works are underway on Area 2 (Upper Chorlton Road) and in Area 4 (Barlow Moor Road) where they are nearing completion. In Area 3 (Manchester Road) works were commencing in December 2021 in 3a but designs are still to be finalised in 3b. |

| | Headline Action | Action | Stakeholders | Location: N,S,C,CC | Timescale | Actions fro April 2021- march 2022 |
|--|-----------------|---------------------------------------------------------------------------------------------------------------------------------------------------------------------------------------------------------------------------------------------------------|--------------|-----------------------|----------------------|-------------------------------------------------------------------------------------------------------------------------------------------------------------------------------------------------------------------------------------------------------------------------------------------------------------------------------------------------------------------------------------------------------------------------------------------------------------------------------------------------------------------------------------------------------------------------------------------------------------------------------------------------------|
| | | Northern Quarter Cycleway between Piccadilly and Victoria Stations Will connect with Regional Cycle Route 86 connecting with the Ashton Canal, National Cycling Centre, Medlock Valley in the east and Irwell River Park and Salford Quays in the west. | MCC | CC | Construction 2021-22 | This scheme is separated into 4 areas with the Area 1 (Ducie Street/Dale Street) nearing completion. Area 2 (Stevenson Square) was subject to a further phase of consultation in November 2021 with further design work ongoing to discuss potential options and solutions with bus operators. Whilst Areas 3 (Thomas Street) and Area 4 (Withy Grove/Shudehill) have been subject to consultation and final designs are currently being worked up. |
| | | Princess Rd/Mancunian Way - Improving access for city centre residents to open space beyond the city centre | MCC | CC | 2019-20 | Roundabout improvements – removal of subways and surface level pedestrian and cycle crossings facilities. This scheme was completed at the end of 2020 |
| | | Levenshulme and Burnage Active Neighbourhood - includes a series of signalised and minor junction upgrades, parallel crossings, modal filters and investment in streetscapes to encourage local trips on foot or by bike. | MCC | C | 2021-22 | This is a filtered neighbourhood approach. A 6 month pilot scheme including 14 initial trial sites was implemented as Phase 1 in the first half of 2021 to help understand changing habits and this has into the permanent design aspirations. The consultation for Phase 2 Burnage has been completed and the proposals are being reviewed. UoM have been involved in installing several traffic counters and air quality monitoring stations to measure the outputs from the proposals. Outline designs for the final scheme have been drafted with a view to presenting to residents at the beginning of December through to the 24th January 2022 |
| | | Rochdale Canal (£1.3m) -includes improvements to the canal towpaths, improved access under a low bridge at Butler Street, and improved accessibility to four sets of steps. | MCC CRT | C | TBC | This project is currently on hold but discussions are ongoing between MCC and TfGM |

| | Headline Action | Action | Stakeholders | Location: N,S,C,CC | Timescale | Actions fro April 2021- march 2022 |
|--|-----------------|-----------------------------------------------------------------------------------------------------------------------------------------------------------------------------------------------------|---------------------|-----------------------|-----------|------------------------------------------------------------------------------------------------------------------------------------------------------------------------------------------------------------------------------------------------------------------------------------------------------------|
| | | Victoria North and Eastern Gateway Connectivity – A parallel route to Great Ancoats Street providing a safe and convenient cycle link to the north of the Manchester and Salford Inner Relief Road. | MCC | CC | 2019-22 | Planning permission has been approved for the new bridge crossing and works are due to start on Phase 1 at Pollard Street junction/Old Mill Street and Redhill Street crossing in January with completion expected in March. Modelling work has been carried out to determine expected traffic flows |
| | | Beswick Active Neighbourhood - includes more of a filtered neighbourhood approach by reducing the number of through routes for cars | MCC | C | 2019-21 | Works have been completed but some further works such as lining may be required following a safety audit |
| | | Oldham Road - Introduces segregated cycle lanes | MCC | C | 2019-22 | Introducing segregated cycleways to both sides of Oldham Road from the Intermediate Relief Road to the North Manchester Connectivity project. Outline design has been developed but further funding opportunities are awaited until the scheme can be developed further |
| | | North Manchester Connectivity - provides a link (via Oldham Road) from the city centre to the north west of Manchester | MCC/ RBC/ OBC | N | 2019-22 | Ongoing. Design work and consultation has been undertaken. No further progress to date. |
| | | Manchester Cycleway (Fallowfield Loop) improvements | MCC/ TfGM/ Sustrans | S | 2015-23 | Designers have been appointed for the scheme. A trial archway is to be installed at Debdale Reservoir with the detailed design being completed in early spring 2022. There has been some challenges in respect of the impact on wildlife due to proposed lighting levels and options are being considered. |

| Headline Action | Action | Stakeholders | Location: N,S,C,CC | Timescale | Actions fro April 2021- march 2022 |
|-----------------|------------------------------------------------------------------------------------------------------------------------------|----------------|-----------------------|-----------|--------------------------------------------------------------------------------------------------------------------------------------------------------------------------------------------------------------------------------------------------------------------------------------------|
| | Deansgate -Involving part pedestrianisation of Deansgate. | MCC/TFGM | CC | 2020-22 | Traffic Regulation Orders (TROs)were advertised late 2021 for the northern end of Deansgate, Parsonage and King Street. Further TROs for a variety of elements are to be advertised in 2022. |
| | Triangle - connected route around the city centre. | MCC/TfGM | CC | 2020-23 | Late 2021 changes to the design were being worked on along with modelling work with consultation expected in February 2022 |
| | Wythenshawe Cycleway - route connecting through Wythenshawe. | MCC/TfGM | S | 2020-24 | Road safety audit carried out in late 2021 in relation to the existing design to inform how the scheme should progress |
| | Ehubs Project. European funded shared mobility pilot scheme | TfGM/MCC | CC & S | 2021-22 | The scheme provides e-cargobikes for hire at certain points around the city. Launches December 2021. Two electric car club vehicles under the project started operating from East Didsbury Park and Ride in late 2021with the further 6 vehicles expected to be operational early in 2022. |
| | GM Cycle Hire – A new cycle hire scheme, with the first phase including roll out on Oxford Road in Manchester. | TfGM/MCC | CC | 2021-22 | Initiation of the project is being undertaken with rollout expected through 2022 |
| | Metrolink Cycle Parking - will improve accessibility to Heaton Park | MCC/ TfGM | N | 2015-22 | TfGM applied for funding for additional cycle parking for all Metrolink Stations on the Bury line north of Piccadilly (Queens Road, Abraham Moss, Crumpsall and Bowker Vale). A contractor has now been identified and installation is expected April-August 20 |
| | Identify and promote public transport routes that can be used to access major parks and greenspaces in Manchester and beyond | MCC, TfGM, CoT | Citywide | 2015-22 | Completed with ongoing promotion. Green Trail revised and relaunched in 2020. |
| | Explore the development of a network of walking and cycling routes to access open spaces in Manchester and beyond | MCC, TfGM | Citywide | 2015-22 | This work is being developed as part of the wider GM wide Bee network of cycling and walking infrastructure network and is in early inception stages. |

| | Headline Action | Action | Stakeholders | Location: N,S,C,CC | Timescale | Actions fro April 2021- march 2022 |
|--|-----------------|--------------------------|--------------|-----------------------|-----------|-------------------------------------------------------------------------------------------------------------------------------------------------------------------------------------------------------------------------------------------------------------------------------------------------------------|
| | | Wildabout Walking Review | MCC | CC | 2020 -22 | Work carried out in 2007 originally identified 14 'breathing places' in the city centre. Work has been carried out to review these spaces and new spaces that have been created, and these have been linked together to provide walking opportunities. Oppotrunities are being sought to promote this work. |

Objective 4 - Improve and promote a wider understanding and awareness of the benefits that green and blue infrastructure provides to residents, the economy and the local environment

Owner: Michael Marriott, David Houliston

Our Manchester link: A11 - Be a City recognised for its high quality of life, with improved green spaces and access to world-class sport, leisure and cultural facilities.

| | Headline Action | Action | Stakeholders | Location: N,S,C,CC | Timescale | Actions for 2021 |
|---|-------------------------------------|-----------------------------------------------------------------------------------------------------------------------------------------------------------------------------------------------------------|---------------------------------|-----------------------|-----------|------------------------------------------------------------------------------------------------------------------------------------------------------------------------------------------------------------------------------------------------|
| 1 | Monitor existing GI within the city | Universities and the Council to establish a mechanism for ongoing review of GI across the city in order to understand distribution and changes over time. To include open access data, wherever possible. | Universities, MCC, LO, STAT, MM | Citywide | 2015 -25 | Further refinement of datasets as part of the refresh of the Strategy Implementation Plan through GrowGreen: Our Rivers Our City work delivered Tree Opportunity maps being developed GI detailed appraisal underway through Ignition |
| 2 | Embed GI in key plans and policies | Embed GI into the review of the Local Plan in line with Our Manchester We Wills | MCC | Citywide | 2019-23 | Ongoing. Consultation and development continues. |
| | | The Council, Registered Housing Providers and other partners to integrate GI as part of place plans, with assets and priorities for action identified, and clear responsibility for delivery. | MCC, RHPs | Citywide | 2018-22 | The RHPs now have their own GI Group established again and meet quarterly. |
| | | Ward councillors and local communities to include GI activity in ward plans as appropriate, drawing from the Eco neighbourhoods pilots in Gorton, Rusholme, Whalley Range, Moston, and Old Moat | Ward Councillors, COM | Citywide | 2020-22 | New MCC Climate Change Officers are developing Neighbourhood Climate Change Plans for all wards, and identifying GI opportunities where appropriate. |

| | Headline Action | Action | Stakeholders | Location: N,S,C,CC | Timescale | Actions for 2021 |
|--|-----------------|--------------------------------------------------------------------------------------------------------------------------------------------------------------------------------------------------------------------------------------------------------------------------------------------|----------------|-----------------------|-----------|--------------------------------------------------------------------------------------------------------------------------------------------------------------------------------------------------------------------------------------------------------------------------------------------------------------------------------------------------------------------------------------------------------------------------------------------------|
| | | Integrate GI as part of the refresh of the Manchester Health & Wellbeing Strategy, recognising the ability of G&B to deliver positive mental and physical health outcomes. | MHWB | Citywide | 2020-22 | Ongoing. Consultation and development continues. |
| | | MCC, GMEU, LWT and other partners to review the Manchester Biodiversity Action Plan in the context of the new GI Strategy and agree next steps | MCC, GMEU, LWT | Citywide | 2018 -22 | Wildlife Trust working in partnership with MCC to engage with residents and other stakeholders to deliver a new biodiversity vision and action plan for Manchester . Draft Biodiversity Strategy produced in December 2021. Manchester signs the Edinburgh Declaration supporting the development of a new post 2020 Global Biodiversity Framework Development |
| | | MCC, CoT and other partners to review the Manchester Tree Strategy Action plan in the context of the new GI Strategy and agree next steps | MCC, CoT | Citywide | 2020-22 | New Managing Manchesters Trees appraisal is progressing. Expected delivery is in early 2022, and this will shape a new Tree and Woodland Action Plan to be delivered in 2022. |
| | | The Greater Manchester Transport Strategy 2040 (formerly LTP) was published by TfGM in February 2017 and sets out long-term proposals to create a cleaner, greener, more prosperous city region through better connections and simpler travel supported by a five year delivery programme. | TfGM | Citywide | 2015-25 | Ongoing. Within the Strategy there is a focus on improving the quality of life of residents partly through providing good walking, cycling and public transport access to leisure facilities and links to green spaces. Jan 2019 - Publication of Draft Delivery Plan 2020-2025 setting out 65 transport projects that are planned to be delivered in the next 5 years towards meeting the objectives of the Strategy. See Objective 3 above. |

| | Headline Action | Action | Stakeholders | Location: N,S,C,CC | Timescale | Actions for 2021 |
|---|----------------------------------------------------------------------------------------------------------------------------------------------------------------------------|----------------------------------------------------------------------------------------------------------------------------------------------------------------------------------------------------------------------------------------------------------------------|-----------------------------|-----------------------|-----------|----------------------------------------------------------------------------------------------------------------------------------------------------------------------------------------------------------------------------------------------------------------------------------------------------------------------------------------------------------------------------------------------------------|
| 3 | Develop research into the benefits of GI to residents, the economy and the environment to provide the basis for new policy, projects, programmes and investment mechanisms | Local universities, MCCA and MCC to establish an ongoing programme of collaborative GI research, initially for 2015-20, to measure the impact of GI across the range of social, economic and environmental benefits set out in the Strategy. | UoM, MMU, UoS, MACF GI, MCC | Citywide | 2015-2022 | Ongoing. £1.2 Million NERC funding secured Green Growth, GHIA and gardens and ecosystem services Successfully bid for £5 mill EU project IGNITION with European Investment Bank looking at investigating alternative ways of funding GI interventions within GM. 202/21 GI Evidence base established, referencing over 1000 pieces of research |
| | | Undertake research to: • Understand the physical and mental health conditions that could be improved through the use of and/or exposure to G&B and • Identify areas for more specific Manchester based cost/benefit research to test the feasibility of these. | UoM, MMU, UoS | Citywide | 2015-22 | Ongoing. GHIA project delivered and final report produced. PhD delivered research into increasing understanding of connection between green infrastructure and physical activity/wellbeing A new observational analysis tool is being piloted. This maybe useful for accessing greenspace usage. The tool will potentially be trialled in 2022 looking at Victoria North. |
| | | Research to identify new models for the management and maintenance of GI, post-construction, including identifying case studies of successfully delivered and maintained schemes of GI in new development | MCC, UoM, MMU, UoS | Citywide | 2015-22 | Ongoing. GrowGreen Demonstration project (West Gorton Community Park) launched in June 2020. Salford Living lab Opened June 2021. New friends of group for West Gorton being progressed, Autumn 2021. IGNITION project commenced to look at financing climate resilient GI in Cities. GI Evidence Base produced GI baseline mapping undertaken. Planning support tool in development. |
| 4 | Showcase local best practice and seek recognition for delivered projects | Create an interactive, publicly accessible, web based project database and map to capture planned and completed GI projects | MACF GI, UoM, MMU | Citywide | 2018-22 | Work ongoing with MCCA, and In Our Nature on showcasing platforms |

| | Headline Action | Action | Stakeholders | Location: N,S,C,CC | Timescale | Actions for 2021 |
|---|------------------------------------------------------------------------------------------------|--------------------------------------------------------------------------------------------------------------------------------------|---------------------------------------------|-----------------------|-----------|---------------------------------------------------------------------------------------------------------------------------------------------------------------------------------------------------------------------------------------------------------------------------------------------------------------------------------------------------------------------------------------------------------------------------------------------------------------------------------------------------------------------------------------------------------------|
| | | Applying for national awards wherever appropriate e.g. Britain in Bloom RHS Awards for community greening projects | MCC + others as appropriate | Citywide | 2015-22 | 2018 CIEEM Award Winner GI Strategy Floating Ecosystems nominated finalist Clean Streams nominated finalist 2021 My Wild City CIEEM 2021 Awards Commended finalist West Gorton Community park 2021 Landscape institute award winner and Design practice Golden Pineapple award winner 130 In Bloom awards citywide in 2015 126 In Bloom Awards citywide in 2016 166 In Bloom Awards citywide in 2017 154 In Bloom Awards citywide in 2018 152 in Bloom Awards in 2019 No awards in 2020 (Covid) 154 in Bloom Awards in 2021 |
| | | Development and promotion of case studies demonstrating best practice | MCC and all other stakeholders | Citywide | 2015-22 | Manchester has 67 GI Case studies. |
| 5 | Raise the awareness of the benefits of GI through public communication, education and training | Use the publicity around nationally promoted GI projects to improve local awareness of GI benefits and encourage behaviour change. | MCC + others as appropriate FoE, UoM | Citywide | 2015-22 | Manchester Festival of Nature 2021 had 90 people in attendance of our two online workshops and on the day itself our festival Twitter account @MancNature had 42,974 impressions (no. times a tweet was seen/appeared on someone's feed) and 2,123 engagements (no. of times a tweet was interacted with - likes/comments/retweets). At the park itself 220 people participated in scavenger hunts and guided wildlife walks. |
| | | Embed GI in public activities aimed at behaviour changing e.g. to increase community responsibility and ownership of shared spaces | RHP, MCC | Citywide | 2015-22 | Ongoing. See Case Studies and Bloom Awards above |
| | | Disseminate information on new opportunities for local groups to become involved in GBI through liaison with neighbourhood officers. | MCC, local groups | Citywide | 2015-22 | New MCC Climate change officers appointed 4 groups involved in local capacity building through the Orchard Project Hubbub creative engagement programme undertaken in Moss Side and Hulme |

| | Headline Action | Action | Stakeholders | Location: N,S,C,CC | Timescale | Actions for 2021 |
|---|----------------------------------------------------------------------------------------------------------------------------|---------------------------------------------------------------------------------------------------------------------------------------------------------------|-----------------------|-----------------------|-----------|-----------------------------------------------------------------------------------------------------------------------------------------------------------------------------------------------------------------------------------------------------------------------------------------------------------------------------------------|
| | | Training session for developers, planners, urban designers, to increase awareness of cost benefits of incorporating SuDS in development and highways schemes. | MACF, MCC | Citywide | 2015-22 | Adaptation Pathways workshop on use of NBS for surface water flood alleviation delivered. Site visits to West Gorton Community Park by GrowGreen Team to facilitate knowledge transfer. Site visits to IGNITION Living Lab to increase knowledge and learning on nature based solutions |
| | | Manchester Museum to identify opportunities to promote the city's natural environment at national and international level | MM | C | 2015-22 | City Nature Challenge 2021 saw 91 people collect 1,854 observations of 523 different species. |
| 6 | Raise the profile of Manchester as an attractive place to live with access to high quality GI within and beyond Manchester | Use the City's GI to attract visitors and create new recreation opportunities. | MCC, MFoN Partnership | Citywide | 2015-22 | Ongoing. West Gorton Community park won the 2021 Landscape Institute award, for its water mgt. the scheme retained large numbers of mature trees, and introducing sustainable drainage systems to new tree planting. Numerous site visits have been facilitated in 2021, with interested stakeholders attending from across the Region. |

Objective 1 – Managing Sustainably

| | Headline Action | Potential projects/activities | Delivery Agencies | Time-scales | Progress |
|---|--------------------------------------------------------------------------------------------------------------------|----------------------------------------------------------------------------------------------------------------------------------------------------------------------------------------------|-------------------------------------|-------------|--------------------------------------------------------------------------------------------------------------------------------------------------------------------------------------------------------------------------------------------------------------------------------------------------------------------------------------------------------------------------|
| 1 | Map and monitor changes in the amount and distribution of trees across the city | Refine datasets of tree and woodland cover | Universities, CoT, GM partners, TEP | 2017-22 | A new commission, Managing Manchester's Trees will establish the most detailed appraisal of tree cover ever undertaken, and will be delivered early 2022. It will also provide a detailed lookback at the evolution of the City's treescape over the last 100 years. The Report's findings will help shape a new revised tree and woodland action plan in 2022/23. |
| 2 | Develop a fuller understanding of the City's tree resource | Deliver annual highway tree inspection programme | MCC | 2017-22 | Ongoing |
| | | Investigate online mapping tool of planned tree works in the City | MCC, Universities | 2017-22 | Ongoing |
| | | Encourage network of data gathering and information sharing e.g. University access to canopy data for research | MCC, CoT, FC, Universities | 2017-22 | City of Trees have been working with consultants TEP sharing data in order to develop the Managing Manchester's Trees analysis. |
| | | Investigate opportunities for valuing Manchester tree stock including: The development of an ecosystem services valuation of treescape | Universities, CoT | 2017-22 | CoT and GM partners delivered i-Trees eco assessment of tree cover across GM with Manchester's tree stock having an estimated value of £3mill/annum. This has been used to further refine opportunity mapping. |
| 3 | Ensure continued and sustainable management of all trees and woodland and best practice approaches employed | Develop, agree and embed principles of tree management in Manchester | MCC | 2017-22 | Principles of Tree Management approved and circulated to all members and key officers. Tree officers are using the document daily, and this approach has been picked up by other tree officers across GM and also housing providers. |
| | | Develop tree and woodland management plans for MCC parks and greenspaces, which include: No waste timber going to landfill; Consideration of sustainable uses of woodland by-products. | MCC, CoT, GMEU, CGs | 2017-22 | Ongoing - Park Strategy approved. Tree related best practice being embedded in Park Management and SBI Management Plans. |

| | | | | | |
|---|-------------------------------------------------------------------------------------------------------------------------------------------------------------------------------------------------|-----------------------------------------------------------------------------------------------------------------------------------------------------------------------------------------|----------------------------------------------------|-----------|---------------------------------------------------------------------------------------------------------------------------------------------------------------------------------------------------------------------------------------------------------------------------------------------------------------------|
| | | Develop tree focused opportunity mapping for: Parks and open spaces; City centre; Neighbourhoods | MCC CoT | 2017-22 | The Managing Manchester's Trees report will also provide ward-based tree capacity charts, with options for tree canopy improvement. |
| | | Encourage the development of tree and woodland management plans by all landowners and managers of trees in Manchester | RHPs, Universities, Network Rail, other landowners | 2017-2022 | MCC are working with HS2 on integrated tree and woodland management plans where appropriate. |
| | | Develop tree management good practice case studies as part of Manchester G&BI Group | Manchester G&BI Group | 2017-22 | West Gorton Community park won the 2021 Landscape Institute Award, for its water management, and the scheme retained large numbers of mature trees, also introducing sustainable drainage systems to new tree planting. |
| 4 | Ensure green and blue infrastructure (including trees and tree management) are considered as part of major new developments and retrofits, policy and strategy reviews where appropriate | Major development projects to include: Transport infrastructure changes e.g. bee network; Mayfield; Medieval Quarter; St Johns; Lincoln Square Kampus; Victoria North | MCC, TfGM, Developers | 2017-22 | Ongoing. Mayfield new park is under construction. New trees planned for St Johns and Medieval Quarter. New mature trees planted in Lincoln Square. 25 New trees planted at Kampus. New outline master Plan has been developed for new City River Park at Victoria North, including new mature trees. |
| | | Local Plan Review | MCC | 2017-22 | The Local Plan will reflect green infrastructure themes and priorities with more consultation planned in 2022 before a final draft plan is produced in late 2022/early 2023. |
| 5 | Develop climate resilient approaches to tree and woodland management | Encourage use of trees within broader climate resilient adaptive plans e.g. Sustainable Urban Drainage projects, public realm improvements | GM CoT, MCC RPs | 2017-22 | Ongoing. In 2021 Manchester produced a new Our Rivers Our City Strategy which highlighted the concept of sponge city thinking and greater permeability. Trees and Woodlands will play a keen part in its effective delivery. |

| | | | | | |
|---|-------------------------------------------------------------------------------------------------|----------------------------------------------------------------------------------------------------------------------------------------------------------------------------------------------------------------------------------------------------|----------------------------------------------------------|------------------------------------------------------|------------------------------------------------------------------------------------------------------------------------------------------------------------------------------------------------------------------------------------------------------------------------------------------------------------------------------------------------------------------------------------------------------------------------------------------------------------------------------------------------------------------------------------------------------------------------------------------------------------------------------------------------------------------------------------------------------------|
| | | Develop Ash Dieback Strategy in partnership with Natural Capital Group | GM, CoT, MCC, FC | 2017-22 | Ongoing. National Forestry Commission monitoring underway. |
| | | Encourage diversity of tree stock e.g. appropriately diverse species and age ranges to help increase resilience to pests and disease | CoT, MCC, RPs | 2017-22 | Ongoing. Tree Action MCR planting encourages diverse climate resilient tree planting. In this the second phase of the programme, over 1200, new mature trees will be planted across the City, increasing Council manages street trees by 10% in two years. |
| 6 | Develop partnership projects that sensitively improve the functionality of the treescape | Develop appropriate projects to deliver the City of Trees vision in Manchester including: Forest Schools; Southern Cemetery Beacon Trees project; Community Orchard planting and management; Queen's Green Canopy Planting | LWT, MBP, MVP, GW MCC CoT, OP CoT, GMCA | 2017-22 2019-22 2017-22 2021/22 | Forest Schools mapping work being undertaken and continuing. Improve Southern Cemetery as an Urban Arboretum in 2021, a new feature avenue and new hedgerow was planted, along with Covid Beacon Trees in all Manchester Cemeteries. 4 new Community driven orchards were delivered in 2020/21: Delamere Park Openshaw; Mersey Banks Fields; Chorlton Park; Kenworthy Woods Northenden. 4 new Community driven orchards are planned for 2021/22: Philips Park Clayton; Khizra Mosque Cheetham Hill; Rochdale Canalside Miles Platting; Ladybarn Park Withington; Platt Fields Park Rusholme. New Feature avenue at Heaton Park to celebrate the 2022 Platinum Jubilee of the Queen |

Objective 2 – Planting Appropriately

| | Headline Action | Potential projects/activities | Delivery Agencies | Time-scales | Progress |
|---|------------------------------------------------------------------------------------------|---------------------------------------------------------------------------------------------------------------------------------------------------------------------------------------------------------------------------------------------------------------------------------------------------------------------------------------------------------------------------------------------------------------------------------------------------------------------------------------------------------------------------------------------------------------------------------------------------------------------------|------------------------------------------------|-------------|---------------------------------------------------------------------------------------------------------------------------------------------------------------------------------------------------------------------------------------------------------------------------------------------------------------------------------------------------------------------------------------------------------------------------------------------------------------------------------------------------------------------------------------------------------------------------------------------------------|
| 1 | Ensure continued healthy and diverse tree canopy cover across the City | <p>Sustain tree and woodland canopy cover of 20% average to 2025.</p> <p>Deliver suitable and sustainable tree planting projects which support biodiversity, in line with the G&BI Strategy, tree audit baseline, park strategy and neighbourhood place plans, including:</p> <p>One for one tree replacement for highways trees;</p> <p>Delivery of tree replacement policies across city;</p> <p>150 Highways Tree planted annually (combination of new and replacement);</p> <p>1000 hedgerow trees planted annually;</p> <p>1500 trees planted annually;</p> <p>Develop Beacon/Heritage Trees Mapping project</p> | MCC, RVIs, RPs, CoT, Woodland Trust, LWT, TfGM | 2017-22 | <p>2020/21 - 4286 trees were planted including five orchards and 2036 hedge trees</p> <p>2019/20 - 9817 trees planted including 6812 hedge trees</p> <p>2018/19 - 2994 trees planted including 3 orchards and 582 hedge trees</p> <p>2017/18 - 4933 trees planted including 4 orchards and 1585 hedge trees</p> <p>2016/17 - 2961 trees planted, including 6 orchards and 832 hedge trees</p> |
| 2 | Continued planting of community orchards in suitable locations | Planting of at least 4 new community orchards annually | RFW, CoT, RPs, MCC, OP, CGs | 2017-22 | 5 new Community Orchards planted in 2020/21 |
| | | Mapping of community orchard locations | MCC, OP, CoT | 2017-22 | Ongoing Collaboration with OP |
| | | Encourage cropping, harvesting, distribution and usage of food provided | OP, CoT, RFW, CGs | 2017-22 | Ongoing. Community events delivered in 4 New Community Orchards |
| 3 | Investigate mechanisms for funding new tree planting, management, and maintenance | <p>Support the delivery of the City of Trees Vision for Greater Manchester by:</p> <p>Active involvement in the GM Forest Partnership (GMFP);</p> <p>Working collaboratively to develop sustainable tree planting and management project ideas through, for example:-</p> <p>MCC Parks and greenspaces opportunity mapping programme and tree sponsorship opportunities</p> <p>Investigating commercial opportunities for trees and woodlands</p> <p>Neighbourhood tree planting opportunities</p> | MCC, Mcr G&BI Group, CGs | 2017-22 | <p>Working with CoT, the City Council identified over 300 new locations for standard trees in 2021 and secured funding from Forestry Commissions Urban Tree Challenge Fund to be delivered by March 2022.</p> <p>CoT have successfully bid to the Green Recovery Challenge Fund for increased Woodland Management in Wythenshawe Woods for two years.</p> <p>The Managing Manchester's Trees Report will look to provide guidance as to how better tree and woodland management could be delivered. Background work has been undertaken in 2021.</p> <p>The report will be delivered in early 2022.</p> |

| | | | | | |
|---|--------------------------------------------------------------|------------------------------------------------------------------------------------------------------------------|--------------------------------------|----------|---------------------------------------------------------------------------------------------------------------------------------------------------------------------------------------------------------------------------------------------------------------|
| 4 | Develop a climate resilient approach to tree planting | Utilise a mixture of native and non native planting projects to ensure resilience against pests and diseases | MCC, Manchester G&BI Group, CoT, CGs | 2017- 22 | Ongoing. Tree Action MCR planting encourages diverse climate resilient tree planting. In this the second phase of the programme, over 1200, new mature trees will be planted across the City, increasing Council manages street trees by 10% in two years. |
| | | Reduce risk of tree pests and disease by ensuring all new trees planted are from registered and approved sources | CoT, MCC RPs | 2017-22 | Ongoing |
| | | Promote SuDS friendly demonstrators e.g. GrowGreen, West Gorton | CoT, MCC RPs | 2017-22 | West Gorton Community park won the 2021 Landscape Institute Award, introducing sustainable drainage systems to new tree planting |

Objective 3 – Protecting Strongly

| | Headline Action | Potential projects/activities | Delivery Agencies | Time-scales | Progress |
|---|----------------------------------------------------------------------------------------------------------------------------------------------|------------------------------------------------------------------------------------------------------------------------------------------------------------|--------------------|-------------|-----------------------------------------------------------------------------------------------------------------------------------------------------------------------------------------------------------------------------------------------------------------------------------------------------------------------------------------------------------------------------------------------------------------------------------------------------------------------------------------------------------------------------------------|
| 1 | Investigate effective tree replacement and compensation measures | Develop and agree appropriate compensation measure for tree loss and replacement in Manchester | MCC, CoT | 2018- 22 | Ongoing. Cavat tree value assessment being used by MCC planners alongside the Manchester's Residential Quality Guide which includes minimum 2:1 tree replacement |
| 2 | Ensure trees of high value are designated as Tree Preservation Orders (TPOs) | Continue to designate new TPOs as appropriate | MCC | 2017-22 | Five new tree preservation orders (TPOs) were also declared in 2021, taking the overall number to 404 |
| | | Enforce as appropriate against unauthorised works to trees protected by tree preservation orders or within conservation areas | MCC | 2017-22 | Ongoing |
| | | Promotion of the Tree Preservation Order process via neighbourhood teams | MCC, CoT, Partners | 2017-22 | Ongoing |
| 3 | Sites of Biological Importance (SBIs): increase the number of SBIs in active management to conserve, protect and enhance biodiversity | Increase the number of sites of biological importance (SBIs) in active conservation management by 1-4% annually, working with landowners and land managers | MCC, GMEU | 2017-22 | 2021/22 62.16% of sites in active conservation mgt. 2020/21 62.16% of sites in active conservation mgt. 2019/20 62.16% of sites in active conservation mgt. Bank Bridge meadow lost. 2018/19: 63.15% of SBIs in active conservation management – Rosehill Wood Management Plan in place. 2017/18: 60.53% of SBIs in active conservation management – Gibb Wood work undertaken. 2016/17: 57.89% of SBIs in active conservation management. Active work with UoM volunteers on Painswick Park Meadow and Castle Hill SBIs |
| | | Provide statistical report to Defra annually | MCC | Annual | |

| | | | | | |
|---|-------------------------------------------------------------------------------------------------|-----------------------------------------------------------------------------------------------------------------------------------------------------------------------------------------------------------------------------------------------------------------|-----------------|---------|----------------------------------------------------------------------------------------------------------------------------------------------------------------------------------|
| 4 | Use planning conditions to ensure high standard of tree works, protection and management | Tree officers to provide guidance and advice through the planning process to ensure compliance of tree works against: BS 5837 (the British Standard for Trees in relation to design, demolition and construction); BS 3998 (the British Standard for Tree Work) | MCC, Developers | 2017-22 | Ongoing through work of tree officers. In 2020/21 with strong MCC officer support, a new feature avenue of SUDS enabled street trees was established along Great Ancoats Street. |
|---|-------------------------------------------------------------------------------------------------|-----------------------------------------------------------------------------------------------------------------------------------------------------------------------------------------------------------------------------------------------------------------|-----------------|---------|----------------------------------------------------------------------------------------------------------------------------------------------------------------------------------|

Objective 4 – Involving Creatively

| | Headline Action | Potential projects/activities | Delivery Agencies | Time-scales | Progress |
|---|-------------------------------------------------------------------------------------------------------|--------------------------------------------------------------------------------------------------------------------------------------------------------------------------------------------------|-------------------------------------------------------------|-------------|---------------------------------------------------------------------------------------------------------------------------------------------------------------------------------------|
| 1 | Further develop research into the benefits of trees | Ongoing programme of collaborative GI research including trees, to measure the impact of GI across the range of social, economic and environmental benefits set out in the Strategy. To include: | Universities, MCC, Manchester G&BI Group, MCCA | 2017-22 | Ongoing. |
| | | NERC Gardens and Ecosystem Services project; | MMU | | |
| | | NERC GHIA project; NERC Green Growth IGNITION Project GrowGreen project Managing Manchesters Trees | UoM UoM UoM UoM CoT TEP | | |
| | | Protecting Playgrounds | Groundwork, University of Lancaster | 2018-21 | Completed. Awaiting Final report. |
| | | Update GI Evidence base with tree and woodland related research | CoT, MCC, GM partners, Universities | 2017-22 | IGNITION undertaking complete GI baseline review, MMT assessing detailed canopy appraisal. |
| 2 | Encourage and record the delivery of community led and focussed tree projects and food growing | Projects to include: | | | |
| | | Wythenshawe Woodlands | CoT, CGs | 2018-23 | New funding through Green Recovery Challenge secured to extend Wythenshawe Woodlands project. |
| | | Orchard Project | Orchard project, MCC | 2020/22 | New Community Orchards to be delivered including training and events. |
| 3 | Raise the awareness of the benefits of trees | Establish social media platforms for ongoing promotion of tree related information | Ward Cllrs, Manchester G&BI Group, CGs, MCC, OP, MCCA | 2017-22 | CoT, WildlifeTrust, Groundwork Trust Websites promoting Manchester initiatives, including Queens Green Canopy, Tree Action Manchester, My Wild City and manchester Festival of Nature |
| | | Ward councillors and local communities to include tree activity in ward plans as appropriate | MCC neighbourhood teams, ward councillors, Community groups | 2019-22 | New Ward based Climate Change Action Plans being delivered |

| | | | | | |
|---|---------------------------------------------------------------------------------------------------------------------------------------------------|--------------------------------------------------------------------------------------------------------------------------------------------------------------------------------------------------------------------------------------------------------------------------------------------------------|-------------------------------------------|-------------|--------------------------------------------------------------------------------------------------------------------------------------------------------------------------------------------------------------------------------------------------------------------------------------------------------------|
| 4 | Provide opportunities for community engagement, involvement and activity | Support for and delivery of tree related activity, training and capacity building. Related volunteer opportunities to include: "Friends of" group events and activities; Development of CoT Citizen Forester Volunteer Scheme; River Valley Initiative volunteer and engagement opportunities | Manchester G&BI Group, CGs, MCC, OP, MCCA | 2017-22 | My Wild City Project ongoing, Manchester Festival of Nature delivered in 2021. New Manchester Nature Consortium established. |
| | | | | 2020-22 | Wythenshawe Waste Warriors supported CoT in regular clean ups in Wythenshawe Woodlands. |
| | | | | 2021-23 | Resilient River Valleys project launched Autumn 2021. Building capacity and creating jobs across Manchester river valleys. |
| | | UoM Tree Trails – A ten-year project creating world-class facilities for staff, students and visitors to enjoy as part of University's Campus masterplan. | UoM | 2017 - 2022 | Three interactive trails launched that highlight 50 of the 1,500 trees across Oxford Road Campus, North Campus and Whitworth Park. |
| 5 | Showcase local best practice and seek recognition for delivered projects | Apply for national awards wherever appropriate e.g. Britain in Bloom RHS Awards for community greening projects | MCC | 2016-22 | 126 In Bloom Awards citywide in 2016 166 In Bloom Awards citywide in 2017 154 In Bloom Awards citywide in 2018 152 In Bloom Awards citywide in 2019 154 In Bloom Awards citywide in 2021 West Gorton Community park won a Landscape Institute award 2021 and a Golden pineapple design award. |
| | | Encourage nomination of Champion trees as part of notable and ancient trees in Britain and Ireland register | MCC | 2017-22 | Ongoing |
| | | | | | |
| 6 | Raise the profile of Manchester as an attractive place to live, work and visit with access to high quality GI within and beyond Manchester | Use of the city's trees and woodlands to attract visitors and create new recreation opportunities. | Manchester G&BI Group, MCC, MCCA, MM, UoM | 2017- 22 | Continued success of Heaton Park Tree Top Trek Opened in 2017.Reopened in 2021 after Covid. |
| | | Promote the City's existing parks and green spaces to maximise their usage by local communities, workers and visitors | MCC, Manchester G&BI Group, CGs | 2017-22 | Ongoing.promotion of Manchester Green Trail network |

Abbreviations

| | |
|--------------------------------------------------------------------|--------------|
| City of Trees | CoT |
| Community groups | CGs |
| Environment Agency | EA |
| Forestry Commission | FC |
| Greater Manchester Ecology Unit | GMEU |
| Groundwork | GW |
| The Wildlife Trust For Lancashire, Manchester and North Merseyside | LWT |
| Manchester – Green and Blue Infrastructure Stakeholder Group | MCR GI Group |
| Manchester Climate Change Agency | MCCA |
| Manchester City Council | MCC |
| Manchester Garden City | MGC |
| Manchester Metropolitan University | MMU |
| Manchester Museum | MM |
| Natural England | NE |
| The Orchard Project | OP |
| Real Food Wythenshawe | RFW |
| Registered Providers (Formerly Registered Housing Providers) | RPs |
| River Valley Initiatives: | RVI |
| Irk Valley Project | |
| Medlock Valley Project | |
| Moston Brook Partnership | |
| Mersey Valley Project | |
| Transport for Greater Manchester | TfGM |
| Tree and Design Action Group | TDAG |
| University of Manchester | UoM |
| University of Salford | UoS |
| The Woodland Trust | WT |



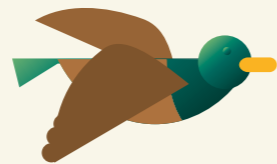
MANCHESTER GREEN AND BLUE INFRASTRUCTURE STRATEGY

Implementation Plan Refresh 2021-25





| | |
|-----------------------------------------------|-----------|
| FOREWORD | 4 |
| 1. INTRODUCTION | 5 |
| 2. GOVERNANCE | 6 |
| 3. PROGRESS | 7 |
| 4. CHANGES – NEW POLICY DRIVERS | 14 |
| 5. CHANGES – NEW THEMES, NEW FOCUS | 19 |
| 6. CHANGES – MORE EVIDENCE | 28 |
| 7. IMPLEMENTATION PLAN | 46 |
| 8. FUNDING AND DELIVERY | 49 |
| 9. APPENDIX | 54 |
| 10. CONTRIBUTORS | 59 |



FOREWORD

Manchester is changing. The world's first industrial city has always been dynamic, but this also presents us with inherited challenges – the legacy of an ever-changing post-industrial landscape. The city continues to undergo massive transformation, with a growing population and a diverse economy. Our landscape changes with us. More trees than ever grace our streets and highways, and there are better parks and places for our communities to thrive. These are all safe havens for nature.

Manchester is moving. Connectivity is key. It links people to places through improved green networks, safer routes to school, and creates stepping stones for wildlife. The landscape moves with us and around us. Rivers and brooks shift and become visible again after being hidden for many years. Gardens and green spaces are at the heart of place-making and turning Manchester into the greenest and most welcoming of cities, while moving with the times.

Manchester is adapting. Manchester will always face its challenges head on. It will always adapt, survive and thrive. In unprecedented times, green spaces have come to our aid, helping us cope with and pull through the pandemic.

Our green spaces have a vital role to play in global efforts to mitigate climate change. However, while climate mitigation is vital, *adaptation to climate change is increasingly urgent.* We need progressive resilience. Our landscape continually helps us adapt to the effects of extreme events, reducing flood risk, and cooling our neighbourhoods in times of heat stress.

If we do not adapt to climate change, we will fail to meet the Our Manchester vision. We need deeds – not just words, and that time is now.

Manchester is committed to investing in a greener future:

- Better places for people and nature
- Better routes for travel
- Healthier, happier, prosperous communities
- A greener, more climate-resilient Manchester.



**Councillor Tracey Rawlins,
Executive Member**

1. INTRODUCTION

Manchester's Great Outdoors: A Green Infrastructure Strategy for Manchester (MGO) was approved by Manchester City Council in 2015. The strategy consisted of three documents – an overarching strategic narrative, a detailed technical report providing a baseline assessment and strong body of evidence, and a ten-year Implementation Plan identifying specific headline actions that could and would realise the strategy's objectives.

The strategy responded to commitments made in the city's Local Plan and Climate Change Action Plan, and was seen as a barometer to measure progress against key objectives of the city's Our Manchester Strategy.

The Implementation Plan was co-developed by a range of stakeholders, including representatives from statutory bodies, academic institutions, environmental charities, registered housing providers, developers, and Manchester City Council departments.

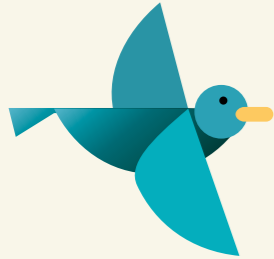
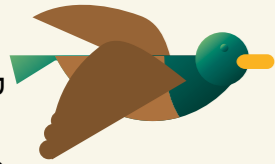
It is important for the action plan to be flexible, adaptable and dynamic. After five years, it was decided to refresh the Implementation Plan. Significant changes, challenges and opportunities have emerged over this time. These are referenced in a bold new Implementation Plan, highlighting strong projects and approaches that reinforce the city's commitment to put Green Infrastructure (GI) and Nature Based Solutions (NBS) at the heart of decision-making and place-making.

The strategy continues to underpin major citywide environmental improvements. Over the next five years it is estimated that **over £150million will be invested in GI-related projects in the city.**

In total, it is estimated that **over £250million will have been invested in GI-related environmental improvements over the lifetime of the strategy and Implementation Plan**, reinforcing the value placed on delivering Nature Based Solutions to help make Manchester a world-class, climate-resilient city.

2. GOVERNANCE

MGO has a strong support network that is delivered collaboratively. The Action Plan is delivered for the city, by the city – both by the Council and a range of partners. Progress against the Council actions is steered within the Council by the G&BI Board, which is currently chaired by the Director of Planning, Building Control and Licensing, and attended by relevant heads of service and other key officers. This provides an opportunity to focus on the strategy objectives and add value to the way G&BI is delivered across the city. Ward members and Council officers are involved with many of the actions needed to deliver the G&BI strategy outlined in the Action Plan. Ward members are often best placed to know their local community groups and understand their communities' needs and opportunities. A range of external stakeholders continue to play an active role in delivering projects that feature in the new Implementation plan.



3. PROGRESS

The strategy and Implementation Plan have made things happen. They have not just captured activity, but have acted as catalysts for some of the most groundbreaking environmental projects the city has ever undertaken. The strategy has encouraged collaboration, bringing together organisations in order to deliver bold, innovative action that will benefit the city for many years to come.

The strategy is a long-term vision. It is about changing behaviours – not just of citizens in their appreciation and understanding of the value of GI, but of different city departments in recognising that considering and delivering Nature Based Solutions as a response to the distinct challenge our urban environment presents should be a mainstream commitment, because of the multiple cost-effective benefits they provide. We are getting better at recognising this.

In 2018, the strategy was recognised as a national benchmark of excellence, winning the CIEEM Award for best practice in Knowledge Sharing. Appraised by an independent expert peer group, this recognition demonstrates that our approach is more than fit for purpose – it is well regarded as a national flagship in GI strategy development and delivery.

In early 2019, a three-year progress report entitled Green and Getting Greener was published, illustrating some of the significant progress being achieved through the strategy in terms of delivery.

Since the Implementation Plan had been in place, over £80million had been invested in GI-related projects in the city. More than fifty new jobs had been created, and over a million people attended events and activities.

This momentum has been built on and continues apace.

The fundamental direction of travel is positive – but there is still much work to do, and challenges to face.

Challenges

Since 2020, the city has faced the unprecedented challenge of the global COVID-19 pandemic. This has had and continues to have a massive and fundamental effect on the way the city and its communities live and work.

It is estimated that the north west may continue to suffer consequences as long-term COVID-19 conditions increase, deepening health and employment inequalities (Office of National Statistics, 2021).

This, combined with an increase in extreme weather events (flooding, drought, heat stress) as a result of climate change, presents major challenges in how Manchester will adapt and evolve.

Climate and Ecological emergency

“The climate crisis has already been solved. We already have the facts and solutions. All we have to do is wake up and change”

Greta Thunberg

In 2019, Manchester declared a Climate Emergency, putting even more spotlight on the importance of GI in terms of supporting the need for the city to be climate-resilient. The city’s climate change action plan emphasises the importance of GI and Nature Based Solutions as key tools in helping us adapt to the challenges of climate change. We need to also take account of the impact a changing climate will have on the functionality of our existing green infrastructure, and to adapt our plans for future environmental improvements.

Manchester’s future climate is expected to reflect the broader and longer-term projections for climate change and climate variability across the United Kingdom. Summers are likely to be warmer, with the potential

for some exceptionally hot days. There are likely to be increases in short-lived heavy rainfall events. Winters are likely to be wetter. The city will also face medium-term variations in climate patterns.

We will respond to the Ecological Emergence which recognises the direct loss of Biodiversity globally.

Manchester has become the first major City in England to register its concern about Biodiversity loss by signing the Edinburgh Declaration, which encourages Cities globally to support the delivery of a new Global Biodiversity Framework.

Manchester is also committed to delivering a new Biodiversity Strategy, a Nature Recovery Network for the City.

OUR VISION FOR PROGRESSIVE RESILIENCE

Like many cities, Manchester faces a range of future challenges, not least those stemming from the threat of climate change. The pursuit of a progressive resilience agenda across policy and action initiatives will nurture a society, economy, and city better equipped to meet all the challenges that we will encounter in the future.

Our vision for a climate-resilient Manchester will see us enhance the capacity of the entire city – our buildings, infrastructure, green and blue spaces, businesses and people – to adapt to future climate shocks and stresses. Being resilient to climate change will ensure we are better equipped to deal with other current and future risks and uncertainties, both known and unknown. Our pursuit of climate resilience will therefore be aligned with other progressive agendas around sustainable, inclusive and green

economic growth and broader aspirations for producing a healthier, happier, and more socially just city.

A set of core principles will underpin this vision for Progressive Resilience, including: To embed and enhance green and blue infrastructure to support climate resilience and adaptation. Manchester’s green and blue spaces serve a vital purpose not only in assisting with climate mitigation and adaptation, but in improving the liveability and the health and wellbeing of the city. We must both protect the climate functionality of these existing spaces, and ensure that new spaces that embrace climate resilience are appropriately integrated into the city.

Green space and COVID-19

“People need to get out. Parks and open spaces are absolutely crucial for our country and our society.”

Prime Minister Boris Johnson, March 2020

Page 68

Prior to the pandemic, in late 2019, community consultation was undertaken by the Wildlife Trust, which demonstrated the importance of nature in people’s lives. The My Wild City consultation received over 2,000 responses, and provided a significant statement that nature plays a vital role for people in Manchester.

After the pandemic began in earnest in March 2020, the importance of parks and green spaces grew exponentially.

During the first lockdown between April and May 2020, the Wildlife Trust undertook a further survey, Valuing Nature Nearby, in which over 1,000 people took part. The findings reinforced the original study, reporting that people valued parks and green spaces more than ever. It also illustrated that parks, green spaces, gardens and river valleys were literally saving their lives – they had become vital to people’s health and wellbeing in a time of extreme uncertainty and national crisis.

Parks in Manchester recorded a 30% increase in usage during 2020 and the first part of 2021.

Green space has become a key part of the city’s life-support system during the pandemic, and will continue to play an important part in post-pandemic recovery planning.

Manchester has announced a major park development programme, which will help improve these key green assets even further.

Managing flood risk

Over recent years, it has become apparent that the effects of climate change continue to present more serious challenges to both local and wider society. The recent January 2021 floods again evidenced the importance and need for the acceleration of climate-change prevention measures across Manchester. Accelerating these measures will not only help to offset the damage already caused to the climate and natural environment, but will also help future-proof communities to ensure that the effects of climate change are lessened.

Flooding is one of the main impacts associated with climate change. As the climate begins to warm, higher rainfall intensities and longer storm durations increasingly challenge the flood-prevention infrastructure put in place across the city.

As Manchester continues to grow as a city it is important that new infrastructure is delivered in response to the risks associated with climate change. A proven method is to

increase the quantity of NBS and Sustainable Drainage Systems (SuDS) across the city. These techniques assist in reducing peak flow times and help to mimic the natural hydrological cycle.

The pace at which NBS and SuDS are being implemented across Manchester is beginning to quicken. One of the ways in which this is being done is through enforcing a stricter approach (at the planning stage) to the consideration of NBS and SuDS on new large developments. The Council is also beginning to work with developers to discover feasible ways of adopting more SuDS and adding these to the highway drainage network.

Recently, Manchester has been successful in winning external funding, which will be directed to combat flooding on both a local and wider catchment scale across the city. Currently, the funding is being focused on two main areas: firstly, on clearing out and upgrading the Manchester culverted watercourse network; secondly, on reducing the size of areas that are currently at risk of flooding, by creating areas

where controlled flooding can occur safely, away from residential areas.

Manchester also continues to develop close-working relationships with other organisations and risk-management authorities by being involved in large-scale external-led flood-prevention projects, and helping to develop local and national long-term strategies for tackling flooding.

Understanding and addressing environmental inequalities

“People who are deprived may also be more vulnerable to the cumulative effects of environmental inequalities than others. Socioeconomic, physical and demographic factors associated with deprivation (eg. language barriers, ability to earn, old age, and health status) often affect people’s ability to respond to other pressures, including those caused by environmental inequalities.”

Environment Agency report: SC020061/SR4



We are striving to be a more inclusive, equitable city. We will endeavour to give all Mancunians a fair share of the environmental benefits that GI can bring.

The health, wealth and wellbeing of everyone in society are fundamental indicators of the success and vitality of a city. Manchester is a complex and diverse city composed of many intersecting communities with contrasting characteristics. Communities and individuals will be affected by climate change in different ways, and some people will have greater capacity to respond than others.

Our new evidence gathering helps us to identify priority areas and challenges for intervention, but we need to work directly with citizens in order to make sure that all voices can be heard, and that environmental inequality is understood and acted on.

Positive examples include The Nature of Manchester work, which helps us understand where, down to ward level, the key environmental risks and challenges are in the city.

Practically, Tree Action MCR looks at the areas in most need of localised tree planting based on levels of existing street tree cover, and is prioritising them first in a new citywide £1million tree-planting programme. This will increase Manchester City Council-managed street tree numbers by 10% in around two years, one of the biggest, most focused local authority-driven street tree-planting schemes undertaken in recent years.



4. CHANGES – NEW POLICY DRIVERS

“As we build back greener from the pandemic, it is vital that we address the twin challenges of climate change and biodiversity loss and protect and improve the environment for future generations.”

Environment Minister Rebecca Pow

Page 70



Legislation is the law. Policies are the guidelines and principles set out to deliver the law. Strategies and plans provide the mandate for targeted action in order to deliver the policy.

Acting locally, thinking globally is more important now than ever before.

Key policies to the city include:

The National Planning Policy Framework (NPPF)

The National Planning Policy Framework sets out the Government’s planning policies for England and how these should be applied. It provides a framework within which locally prepared plans for housing and other developments must be produced.

Green Infrastructure is seen as a key component of sustainable development and placemaking.

The Environment Act

“...decarbonising in a climate-resilient way, with nature at its heart...” Emma Howard Boyd, Chair, Environment Agency, GM Green Summit 2021

The new Act is genuinely a once-in-a-generation opportunity to protect our environment and set a course for nature recovery in the UK. After Brexit, the Government will be directly responsible for environmental law and policy for the first time in decades. In the face of a climate emergency, it is hoped the new Act will provide a robust framework for improving our natural environment.

The Act (England and Wales) will create a new governance framework for the environment, act as an enabler for priorities set out in Defra’s 25 Year Environment Plan, and play a pivotal role in the UK’s aim to achieve net zero-carbon emissions by 2050. Key to this will be:

Defra’s 25 Year Environment Plan

The plan is the mechanism to deliver the ambitions set out in the Environment Act.

Objective headings include prioritising action supporting:

1. Clean air
2. Clean and plentiful water
3. Thriving plants and wildlife
4. Reducing the risks of harm from environmental hazards
5. Using resources from nature more sustainably and efficiently
6. Enhancing beauty, heritage and engagement within the natural environment
7. Mitigating and adapting to climate change
8. Minimising waste
9. Managing exposure to chemicals
10. Enhancing biosecurity

KEY ASPECTS OF THE ENVIRONMENT ACT

BIODIVERSITY NET GAIN NATURE RECOVERY NETWORKS (NRN)

A key output of the new Act, Biodiversity Net Gain, will provide a legal requirement that any impact on biodiversity resulting from new development, where it cannot be avoided, will not only be compensated, but will have to demonstrate a 10% biodiversity net gain – a legal commitment to improve biodiversity on development initiatives.

Conservation covenants between landowners and responsible bodies (possibly effective environmental managers) will be established to provide sustainable and effective management of the intervention for a minimum of 30 years.

The NRN will be a national network of wildlife-rich places. The Government's aim is to expand, improve and connect these places across our towns, cities and the countryside.

The NRN is a major commitment in the Government's 25 Year Environment Plan and part of the forthcoming Nature Strategy.

Establishing the NRN will:

- Enhance sites designated for nature conservation and other wildlife-rich places – newly created and restored wildlife-rich habitats, corridors and stepping stones will help wildlife populations to grow and move
- Improve the landscape's resilience to climate change, providing natural solutions to reduce carbon and manage flood risk, and sustaining vital ecosystems such as

improved soil, clean water and clean air

- Reinforce the natural and cultural diversity of our landscapes, and protect our historic natural environment
- Enable us to enjoy and connect with nature where we live, work and play – benefiting our health and wellbeing.



Regional policy driver – Places for Everyone

Places for Everyone is a long-term plan of nine Greater Manchester districts (Bolton, Bury, Manchester, Oldham, Rochdale, Salford, Tameside, Trafford and Wigan) for jobs, new homes, and sustainable growth. It has been published by the GMCA on behalf of the nine districts.

The plan is a joint development plan of the nine districts, which will determine the kind of development that takes place in their boroughs, maximising the use of brownfield land and urban spaces while protecting Green Belt land from the risk of unplanned development. It includes policies on Green Infrastructure and Biodiversity within the Greener Places section of the draft plan. The plan is intended to be submitted for examination in early 2022 with an expected adoption of the plan in 2023.

Local policy drivers – The Manchester Local Plan

Our existing local plan (the Core Strategy 2012–27) sets out Manchester's approach to development and is used to guide decisions on planning applications across the city.

Development in Manchester is at record levels: investment here is creating jobs, and new homes are being built. At the same time, we want any future growth to support our ambition to be a zero-carbon city by 2038 or before, and to be a green, climate-resilient city.

The plan also provides an opportunity to embed and strengthen policies around Green Infrastructure.

To make sure it fits our needs and ambitions for the next 15 years, work has begun to look at what a new local plan should cover: an issues consultation in spring 2020 set out the key challenges and policy areas the local plan will address.

The intention is to work up a draft local plan, which will have more detail of how the city will deal with the main issues and challenges it is facing. More consultation will follow in 2022, before a final draft plan (publication version) at the end of 2022/early 2023, which will be submitted for examination in 2023.



Manchester Climate Change Framework 2020–25

The Manchester Climate Change Framework (MCCF) 2020–25 is the city’s high-level strategy for meeting climate change objectives and targets. The Framework has been produced by the Manchester Climate Change Agency, on behalf of the Manchester Climate Change Partnership.

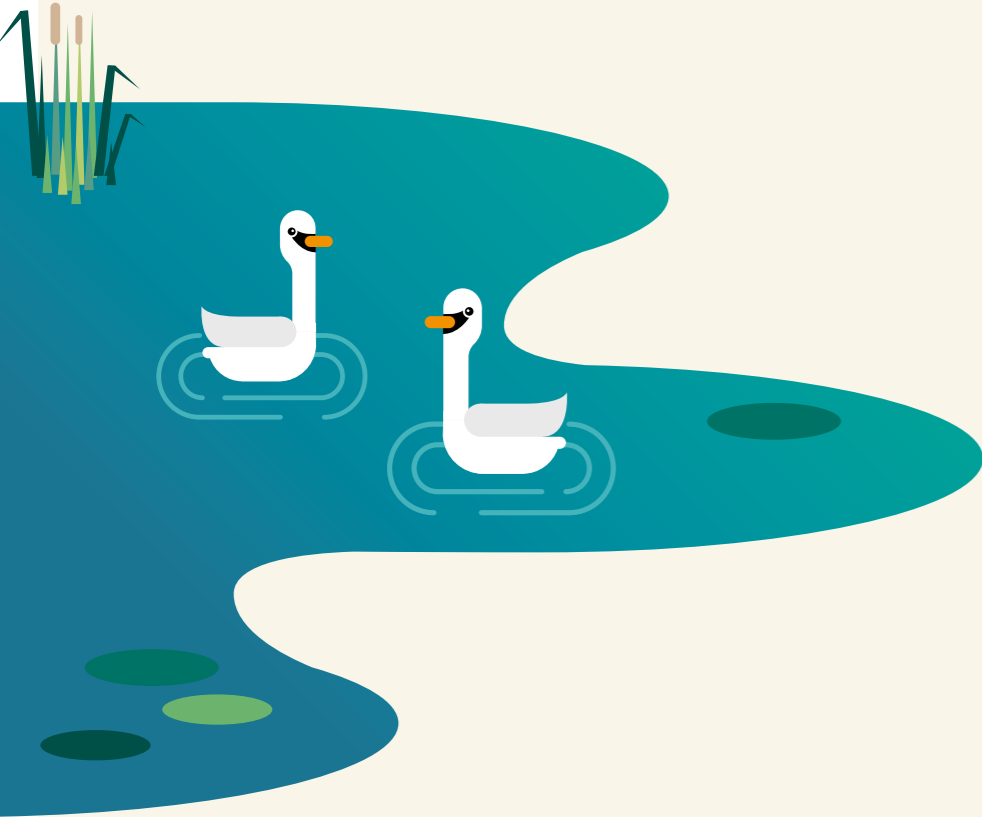
MCCF objectives and targets:

- Staying within carbon budgets – based on recommendations by the Tyndall Centre for Climate Change Research in 2020
- Climate adaptation and resilience
- Health and wellbeing
- Inclusive, zero-carbon and climate-resilient economy.

Eight areas for action have been developed to meet the objectives and targets:

- Buildings (existing and new)
- Renewable
- Energy
- Transport and flying
- Food
- The things we buy and throw away
- Green Infrastructure and Nature Based Solutions
- Supporting and enabling residents and organisations to act.

Page 72



5. CHANGES – NEW THEMES, NEW FOCUS

Since the strategy was published, we have recognised that there are priorities within the city’s GI landscape that need independent and more detailed focus.

For example, in our initial appraisal in 2015, the data analysis at the time looked at all garden space across the city and identified it all as green, whereas we now know that not all the city’s garden space is green – over time some is lost to hardstanding.

Bespoke, independent commissions have been developed that look in much more detail at the city’s key GI assets – deep dives that assess their extent and usefulness with state-of-the-art approaches to increase our understanding of them.

These key pieces of work are freely available to inform decision-making, and they provide a useful and practical focus on these vital aspects of the city’s GI landscape:


Focus on nature: Nature of Manchester (NoM)

This piece of work is designed to help turn GI policy into practical action – an accessible, informative one-stop shop for community leaders and neighbourhood planners alike. It looks in detail at the key environmental challenges faced by the city. These include:

Climate resilience, flood risk, water quality, accessing green space, air quality, noise pollution, biodiversity, economic impact.

The report also evaluates the different types of NBS that can contribute to addressing a particular challenge. These include:

- Public green spaces
- Trees and woodlands
- Gardens
- Rivers, canals and lakes
- Growing spaces, eg. allotments
- Sustainable urban drainage systems, eg. ponds, rain gardens, ditches and swales
- Green roofs and green walls.



NoM builds on the technical report developed in the original GI strategy, but takes things down to neighbourhood level GI assessments – a super tool to help understand where and how GI can play a role in improving our neighbourhoods.

NoM was developed in partnership with the West Country Rivers Trust to do two things:

1. To provide a baseline of natural capital assets and functionality across all wards in the city
2. Help start conversations around delivering NBS that provide multiple benefits for neighbourhoods and communities

The report has also been used to develop a localised neighbourhood plan, the Nature of Hulme, which applies the same principles at a more local level. This is now being picked up through newly appointed climate change officers to start the conversation in other parts of the city.

NoM was delivered as part of the European Union's EnRoute project, and was received favourably by the European Commission:

“Our EnRoute project demonstrates that nature-based solutions and green infrastructure are vital components of growing cities. Manchester's G&BI Strategy has helped us illustrate this and serves as an example for many other European cities in our network.”

Joachim Maes, European Commission – International project co-ordinator, EnRoute project.

Focus on networks

GM Nature Recovery Strategy

The importance of wider connectivity, of GI as stepping stones for people and wildlife, is the focus of this piece of work. It re-emphasises the need for Manchester to be a mosaic of GI opportunities at different spatial scales – one of the beauties of the modern city is this dynamic, ever-changing aspect of the landscape.

Greater Manchester is one of five areas selected by the Government to pilot the development of a Local Nature Recovery Strategy.

Local Nature Recovery Strategies will become a statutory requirement when the Environment Bill is passed.

The Local Nature Recovery Strategy in Greater Manchester will be Greater Manchester's Nature Recovery Plan. It is being created through a collaborative process led by Greater Manchester Combined Authority (GMCA) in partnership with Natural England and the Greater Manchester Ecology Unit. It is hoped that its development will start taking shape in 2022.

The plan's outcomes and suggested focus areas will be aligned with the new Biodiversity Strategy for the city.

Focus on biodiversity

My Wild City

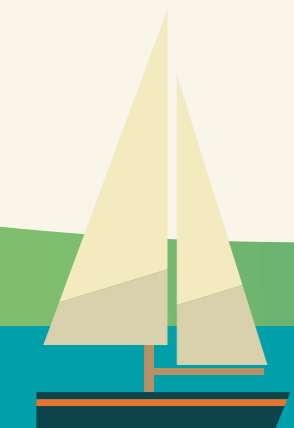
The My Wild City project is a four-year partnership between Manchester City Council and the Wildlife Trust, and aims to develop a strong new mandate for biodiversity in the city.

Extensive and innovative engagement and consultation with a wide range of stakeholders will lead to the delivery of a new Biodiversity Strategy for Manchester.

The project is already receiving national acclaim, its consultation approaches celebrated and recognised as a commended finalist at the prestigious 2021 CIEEM Awards in the Knowledge Exchange category.

The project will bring a citywide focus to the idea of a people's nature recovery network, and includes developing around 75 new species action plans across five broad habitat areas in the city. This expands on the regional GMLNRN work pilot referenced above undertaken by Natural England, and applies the concept at a local level.

Manchester's Nature Recovery Network is, and will be, everywhere. From a window box on a high rise, a tree in a garden, a park, to a river Valley or neighbourhood green space, we will all have a role to play in delivering the people's Nature Recovery Network.



Focus on river valleys

Our Rivers Our City

This piece of work, undertaken by consultants TEP in partnership with the Groundwork Trust and Mersey Rivers Trust, is the most comprehensive reassessment and appraisal of the city's three main river valleys ever undertaken.

It aims to re-energise some of the city's most important natural spaces to make them 21st-century assets, drivers for growth, and places where people and nature can thrive.

As well as an overarching strategy for the city, individual long-term action plans have been co-developed for the River Mersey, River Irk, and the Medlock Valley.

It is a bold and ambitious ten-year plan, taking on board and developing further new concepts, such as Sponge City Thinking, where permeability and landscape-led approaches are the norm not the exception.

It has been developed collaboratively; even during the pandemic, the Groundwork Trust endeavoured to engage, involve, inform and survey those interested in the city's river valleys.

Focus on trees and woodlands

Managing Manchester's Trees

Manchester is leading the way with the level of detail provided in this authoritative look at the way the city's treescape has evolved, how it functions and how it can be improved.

An assessment of the treescape with this level of detail has never been undertaken before in the UK.

Delivered by consultants TEP and City of Trees, in partnership with the Council, there are three elements to the work:

Evolution – an informative 100-year look back at how the city's treescape and its neighbourhoods have evolved over time, referencing population decline and growth, and reflecting the changes, both positive and negative, across the city's landscape.

Function – how do we look after the 1.2million trees we already have, and cater for constant challenges such as pests, disease and climate-resilience, eg. AshDieback. We'll provide options for better and sustainable treescape management.

Opportunity and capacity – using the most detailed data sets on tree cover ever provided, we are able to deliver ward-level insight into tree capacity, identifying where and how tree canopy can be increased effectively, sustainably and appropriately.

This nuanced, exciting vision looks beyond the usual places for planting (parks and green spaces) and encourages us to look at our own spaces, our gardens and road sides to increase the city's canopy cover, not anywhere and everywhere, – but where trees are needed most.

The capacity mapping will also help steer and target Tree Action MCR, the city's £1million tree-planting programme.



Focus on gardens

My Backyard

Undertaken by Manchester Metropolitan University and partners, My Backyard takes a detailed look at this key, yet diminishing, component of the city's landscape – its private and domestic gardens. By gardens, we are talking about all outside space associated with a residential property.

The My Backyard project developed a new understanding of the benefits that gardens provide for residents in Manchester. The research sought to provide evidence on the amount of green space in gardens, how it is spatially distributed across the city, and how this affects the associated benefits that green space provides.

Domestic gardens cover a significant proportion of the total area of Manchester, with around one fifth of Manchester's land area being gardens. The average proportion of domestic gardens to total ward area is 22–26%.

Looking at the stock of gardens, there are over 156,000 gardens in Manchester.

Many of these are very small plots. We find that of the total area of gardens of 24km², only half is green and blue space – around 12km².

An action plan was then co-developed with partner organisations, with the aim to increase green space and enhance wildlife in gardens across Manchester.



Focus on health

GHIA project

Nature and Ageing Well in Towns and Cities: why the natural environment matters for healthy ageing

GHIA was a three-year research project that aimed to understand the benefits and values of urban green infrastructure to older people and how green infrastructure attributes and interventions can best support healthy ageing in urban areas. The project was conducted in Greater Manchester and run as a partnership between a range of researchers, organisations, practitioners and community groups.

The project demonstrates:

- How and why the natural environment matters for healthy ageing in urban areas
- Why urban nature and natural green and blue spaces are integral to what makes an urban area age-friendly
- Why multiple perspectives are needed to understand what actions are required in a range of sectors of policy and practice.



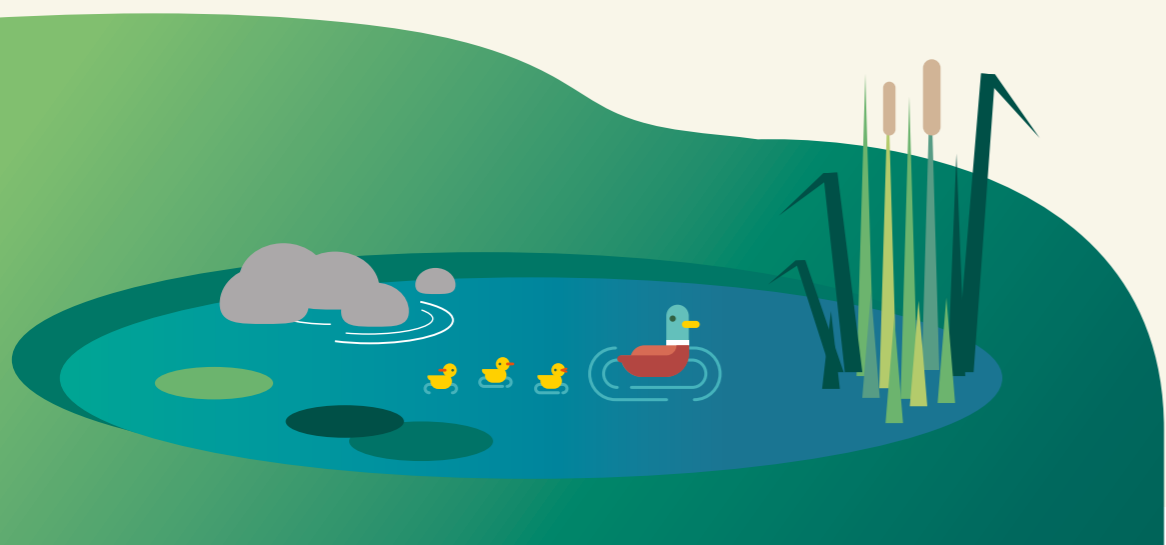
6. CHANGES – BETTER EVIDENCE SHARED LEARNING

Better evidence means more informed decision-making, engaging with experts, learning from best-practice approaches, developing new partnerships, breaking down barriers and making connections.

We also need to evaluate how form and function of GI will itself alter given climate change and how the use of public and green space will alter as people use it to cope in challenging weather conditions.

Strong evidence makes the case for deploying NBS all the more compelling. If we want the consideration of NBS to be the norm not the exception, then we have to back this up.

You have to learn in order to change and adapt – and the new GI Implementation Plan is informed by some of the most exciting and groundbreaking GI research and demonstration projects in the world:



GM Natural Capital User Guide

Developed by GMCA to showcase the extensive array of natural capital-assessment tools and guidance, this guide helps users to understand and use the award-winning Natural Capital tools that have been specially developed for Greater Manchester.

There are lots of tools and resources out there that can sometimes be overwhelming and confusing. This guide helps interested parties to understand and use the tools, and provides further reading materials as well as case studies of how the tools are being used by partners, land managers and community groups.

“This user guide demonstrates that providing a better understanding of the significant monetary value of Ecosystem Services can help direct investment to areas that need it most. The innovative methodology is wholly replicable and could be used across different landscapes and varying scales. The project sets a precedent whereby stakeholders in Greater Manchester have a robust evidence base that can be interrogated on the MappingGM website so that the legacy of the project continues.”

Landscape Institute Award Judging Panel 2019



GM IGNITION project

This project, backed by €4.5million from the EU's Urban Innovation Actions (UIA) initiative, brings together 12 partners from local government, universities, NGOs and business. The aim is to develop the first model of its kind that enables major investment in large-scale environmental projects that can increase climate-resilience.

The project has already delivered cutting-edge research that will shape Manchester's own GI landscape:

Evidence base

This IGNITION evidence base acts as a comprehensive and central evidence repository of existing and emerging GI information, appraising over 1,000 pieces of literature and reports – so we don't have to. This work is invaluable for anyone contemplating or considering NBS interventions. The evidence base currently provides accessible, useful information around the multiple benefits of:

- Green walls
- Street trees
- Urban green space
- Green roofs
- Sustainable drainage systems (SuDS).



A new GI baseline for Manchester

Work on understanding and measuring GI across the city has been undertaken by The University of Manchester to unprecedented levels of detail. It is the most comprehensive analysis of the city's GI landscape ever undertaken.

The IGNITION GI baseline for Greater Manchester is an innovative output. It builds on, and in some cases enhances, the best available spatial data, and enables us to provide the most accurate quantification of Manchester's GI to date. Crucially, for the first time, it presents a two-dimensional GI baseline incorporating surface and tree canopy cover data.

In summary, the key headlines from the IGNITION Manchester GI baseline are:

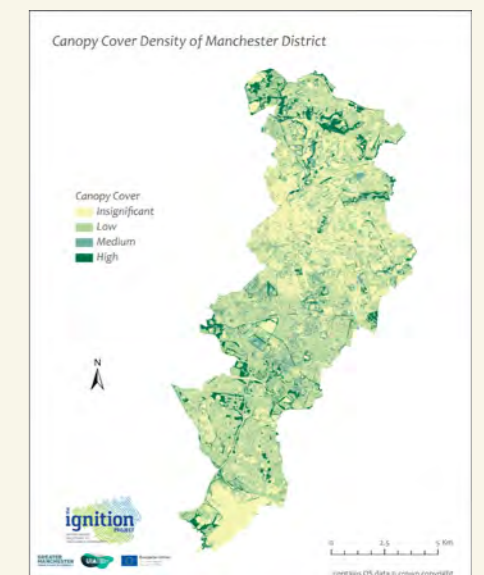
- 53% of Manchester consists of green and blue space; nearly 61km² in total.

- 38% of Manchester's green space consists of private gardens. Although they are included as an element of Manchester's green space, we recognise that private gardens incorporate grey space such as buildings, drives and patios. This means that the city's GI cover will actually be less than 53%, and research is ongoing to develop a better understanding of this.
- 20% of Manchester is covered by tree canopy. Although much of this is over green and blue spaces, there is notable tree canopy covering grey spaces (eg. paths, roads, car parks, man-made surfaces) almost 4km² in total. This means that over 7% of Manchester's grey spaces have tree canopy cover. This tree canopy offers many of the functions associated with GI, including intercepting rainwater, providing shading and cooling, and offering space for biodiversity. However, this canopy cover would not be reported as GI under other baselines that capture only surface GI cover (eg. the OS

MasterMap Greenspace Layer). This demonstrates how the new IGNITION GI baseline enables a more accurate and representative understanding of Manchester's GI resources to be provided.

With the IGNITION GI baseline, we now have a better understanding about what we have, in terms of the extent and make-up of the city's landscape and GI resource. The Greater Manchester GI Explorer (a new planning support system) allows us to interrogate this GI data and provides us with guidance on where we can potentially change, improve and add value to the city's GI.

A more detailed appraisal of the Ignition baseline can be found in the Appendix



Planning support system – the Greater Manchester GI Explorer

This interactive tool will enable planners and officers to interrogate GI data intuitively, providing easy-to-access datasets. The Greater Manchester GI Explorer is a user-friendly software system that allows practitioners to visualise and analyse Greater Manchester’s GI baseline data. The GI Explorer will support planning processes and decision-making linked to GI in Manchester, and will help to progress a spatially informed and strategic approach to identifying potential locations for GI conservation and enhancement.

Living Lab

Seeing is believing. Developed as part of the IGNITION project, The Living Lab at Salford University is a purpose-built £1million state-of-the-art space to demonstrate to all the true value of NBS.

The Living Lab has ready-made installations with built-in monitoring to prove the effectiveness of NBS in real-life situations, such as green walls, green roofs, rain gardens and SuDS-enabled street trees.

GrowGreen project

GrowGreen is a five-year €15million European Commission-funded project that aims to create climate and water-resilient, healthy and liveable cities by investing in nature-based solutions (NBS). Making nature part of the urban living environment improves the quality of life for all citizens and will help business to prosper.

By embedding NBS in long-term city planning, development and management, accessible green and blue spaces are a permanent feature of all urban areas around the world, creating harmony

between people, economies and the environment for the benefit of all.

The GrowGreen project involves 22 partners from cities all over Europe and Wuhan in China. It involves local government, environmental experts, practitioners and academics in order to deliver not just practical projects but key policy drivers, such as new GI/NBS strategies, consistently and effectively.

The GrowGreen project is all about shared learning and collaboration.

GrowGreen has been a major driver in influencing and supporting the development of the new Implementation Plan for Manchester and has been a major catalyst for change and for doing things better.

GrowGreen has provided the city with vital support, guidance and promotion, helping us to commission bespoke, necessary evidence such as the Our River Our City work (outlined above) and the following key elements:

Green City Framework

A road map to a GI Strategy, the Green Cities Framework helps provide a template for cities starting on the journey of GI Strategy Development. This work has allowed us to sense-check our processes, acting as a useful guide to make sure our new action plan takes into account the relevant elements and suggested processes of the GCF.

West Gorton Sponge Park

“Worth every penny...”
Heather Rangzab, local resident, Gorton

This award-winning park is the first of its kind in Manchester – a £1million co-designed bespoke response to the challenges of climate change. It’s a park that quite literally drinks and utilises water from extreme events and uses surface water run-off for irrigation.

Located in the neighbourhood of West Gorton, the park was opened in June 2020, in the middle of the global pandemic – a testament to the city’s commitment and determination around the climate change agenda and the culmination of a

ten-year regeneration programme for this area. The park includes meadow, woodland and community areas, and has been designed with local residents. The NBS design features in the park include bioretention tree pits, swales, rain gardens, permeable paving, and an irrigation rill or drainage channel.

The park is also a Living Lab, with extensive monitoring of a range of themes across the site, including water run-off rates, filtration effectiveness, biodiversity, and health and wellbeing – all reporting on the park’s functionality and usefulness for many years to come.



Sponge City thinking

The concept of Sponge City thinking was developed in 2013 to address urban water management challenges in China and rebuild a harmonious relationship between people, water and cities.

The Sponge City concept refers to a way of urban water management that allows cities to resolve urban waterlogging, improve water storage and discharge capacity, enhance water quality, and alleviate heat island effects through a mix of nature-based solutions and grey solutions, by applying the concept's six technical measures: infiltration, retention, storage, purification, utilisation and discharge.

Wuhan is one of the Sponge pilot cities in China, and a sister city to Manchester.

The target of the Wuhan Sponge City Programme is to try and successfully absorb 60%–85% of annual rainfall by 2030.

So far, the Wuhan Sponge City Programme has achieved great success and showcased the ability of reducing flood risk and the potential of NBS. In the summer of 2020, Wuhan experienced multiple rounds of intense, record-breaking precipitation during the long-lasting rainy season, but no serious waterlogging occurred.

Working with Wuhan and other partners, it is hoped these pioneering concepts will now be applied and implemented citywide as part of the Our Rivers Our City project and in other key infrastructure improvement programmes, including the city's own flood-defence programme.

Adaptation pathways approach

Adaptation pathways, a dynamic adaptive planning approach pioneered in Europe by leading environmental planning experts Tecnia, aims to support the best and most appropriate decision-making for a particular neighbourhood by providing NBS alternatives in order to change system outcomes in a desired way.

This planning approach is aligned with the already developed Net-Benefit Wheel work developed in the Nature of Manchester work referenced earlier.

The adaptation pathway specifically aims to increase the climate resilience of one key benefit (flood resilience) to support evidence-based decision-making.

The adaptation pathway work had two levels: a strategic view at Manchester city level and a detailed work at district level (West Gorton) and provides:

- A route map on which NBS, including infiltration techniques and adaptation options, can be implemented in West Gorton over time
- A long-term adaptation vision and objectives, based around NBS to reduce surface water flooding
- Help to identify interested parties who could be engaged to maximise adaptation to climate change.

The GrowGreen project provided the opportunity to build an adaptation pathway approach for Manchester, with special focus on West Gorton, the case study area within this EU project, effectively delivering a one-stop shop for assessing NBS interventions locally.

Communications planning

The GrowGreen project has provided us with an abundance of promotion and networking opportunities, giving Manchester and its GI Strategy a global platform to share best practice, to continue collaborating, improving and learning.

Through the GrowGreen programme, exciting collaborations with Wuhan have helped us to understand and embed Sponge City thinking into our strategic approaches (eg. Our Rivers Our City) and practically in the West Gorton Sponge park demonstrator.

Manchester was the first north west city to sign up to the global Cities With Nature Network, a collaboration with cities around the world on NBS and GI delivery.

Through the GrowGreen communication channels and platforms, numerous international events and forums have provided Manchester with the opportunity to showcase its work on GI to a global audience.

Refining the Implementation Plan

The intention of updating and refining the Implementation Plan is not just to build on the success to date, but to recognise changes that will add value and build even more momentum around the GI agenda for many years to come. The original 26 headline actions have been streamlined to 18, integrated to avoid duplication and improve impact. This makes it easier for organisations to see where their commitments can fit in and add value. Many of the headline actions and associated projects are cross-cutting and could occur across several objectives, but all will add to the city's overall climate resilience – progressive resilience.



Objective One: Improving GI quality and function, focusing on:

- River valleys and canals
- Parks
- Trees and woodlands
- Gardens
- Other land
- Healthier and resilient communities
- Protecting and enhancing ecology



Objective Two: Embedding GI in developments of any scale across the city, including retrofit.

- Embedding GI into key plans and policies
- Embedding GI into key strategic regeneration and infrastructure projects
- Embedding GI in developments of any scale across the city
- Embedding GI into city centre development and planning initiatives



Objective Three: Improving access and connectivity for people and wildlife, focusing on:

- Green routes – neighbourhoods and travel routes
- Blue routes – canals and river valley routes
- Cross-boundary links



Objective Four: increasing understanding of GI with a focus on:

- Improving monitoring
- Increased research
- Equitable engagement and involvement
- Showcasing best practice

Decisive action

We have access to ground-breaking, cutting-edge research and guidance.

We never stop learning – the new action plan will be steered and informed by some of the most exciting new environmental evidence, projects and information, in never-before-seen levels of detail ever produced and delivered in the city.

Page 22
However, the most exciting thing about an action plan is – well, action.

Tangible, equitable, real benefits that will be seen and felt by us all. A generational shift, a decisive reaction to Climate Emergency that will make a positive difference to all our lives, now and forever.

As a city, Manchester is serious about this commitment and will invest more than £150million over the next five years to deliver major environmental improvements across Manchester. That's on top of some £100million already invested.

In total, nearly a quarter of a billion pounds will be invested into a greener future.

- Better places for people and nature
- Better routes to travel
- A greener, more climate-resilient Manchester.

These are bold, visionary initiatives that will bring to life all the evidence provided – statements of intent that Manchester will become a world leader in landscape-led environmental change.

Highlighted here are some of the key projects and commitments we can all look forward to enjoying over the years to come.

Headlines from the future

Key projects driving environmental change

Park Development Programme: 2021–25

“If you create a city where children can play and where parents want their children to play, then you will create a successful city.”

Maria Vassilakou, Vice-mayor and Deputy Governor of Vienna

Launched in 2017, the Manchester Park Strategy set out four key themes.

- **Parks at the Heart of Neighbourhoods** looks at the physical role of parks in neighbourhoods across the city, as well as their size, accessibility and character.
- **Vibrant Parks, Vibrant Communities** considers the activities that take place in parks to ensure they are a focus of community life, providing opportunities for exercise and sport, and a wide variety of events that can generate additional income for the benefit of parks.
- **A Manchester Quality Standard** sets out a good-quality standard for managing and maintaining parks.

- **Productive Parks in Partnership** describes ways to deliver park services in a more collaborative and fruitful manner with communities and local organisations, not just the Council.

In order to support these four themes, an innovative new park investment programme budget has been approved. This £12.5million five-year programme of tailored investment opportunities ranges from small-scale park improvements to larger-scale sustainable and even commercial ventures to improve the quality and function of the city's parks.

The Park Investment Programme will encourage exciting, new collaborative approaches in order to realise its ambition.



Tree Action MCR

“From a Council point of view, I think this is one of the biggest street tree-planting programmes undertaken in recent years by a local authority.

“Consulting on, sourcing and eventually planting 2,000 big trees in around two years – that’s an increase of approximately 10% in the number of street trees that we manage. It’s unprecedented.”

Chaz Farghaly, Operations Head, Manchester City Council

This £1million capital programme will take on board the finding of the Managing Manchester’s Trees (MMT) work already explained, and deliver the most focused programme of street tree-planting undertaken in recent years.

The city’s arboricultural team are aiming to assess all wards in terms of their actual potential for tree-planting on Council-owned green spaces. The neighbourhoods in the city with the fewest street trees will be the first to have some new ones.

It is usual for around 150 new street trees to be planted through the Council’s arboricultural team. These may be replacement trees for trees that have died, or new trees where communities have expressed an interest in them.

TAMCR has planted over 1,000 new trees in 2020/21 – over six times more than usual. By the end of the programme it is expected that the number of Council-managed street trees will have increased by 10%, with more than 2,000 new big street trees being planted.

It is hoped that this programme will continue to evolve over time, with the opportunities provided through MMT guiding new investment to further improve Manchester’s treescape.

Bee Network travel routes

Greater Manchester’s new Bee Network will be the largest joined-up system of walking and cycling routes in the UK, providing easier ways to get in and out of the city by walking or cycling.

Unveiled in 2018 by Cycling and Walking Commissioner Chris Boardman, the Bee Network is a plan to revolutionise travel across the city-region, making active travel the first choice for travelling to work, school and the shops. It intends to make trips by foot or bike a safe and pleasant experience.

The Bee Network also helps utilise GI as an attractive backdrop to enhance the cycling and walking experience.

Almost £30million is committed to Bee Network improvements in Manchester with projects that include:

- Chorlton Cycleway
- Oxford Road Corridor/ Wilmslow Road, Didsbury
- Fallowfield Loop/Yellow Brick Road, Gorton
- North and Eastern Gateway, Ancoats
- Northern Quarter (Piccadilly to Victoria)
- Beswick filtered neighbourhood
- Levenshulme and Burnage Low Traffic Neighbourhoods.





Resilient river valleys

This ambitious two-year, near £1million programme will focus on delivering some key aspects of climate resilience, sustainable management and new employment and training opportunities identified in the Our Rivers Our City strategy.

Orchestrated by Groundwork Greater Manchester, the successful partnership bid will use funds from Defra and Heritage Lottery's Green Recovery Challenge Fund.

In addition to delivering a programme of physical work across a network of sites, it will:

- Create a number of new jobs within delivery teams and for young people recruited through DWP Kickstart and NCS Youth Corps initiatives (nine new roles, six urban forestry assistants at City of Trees, and 32 roles for young people)

- Deliver a programme of community engagement work to connect people with nature-based activity within the river valleys, and increase involvement in volunteering and maintenance of urban green space
- Develop and deliver new training modules relating to NBS for staff, people on employment programmes, and community members, as well as specific training courses and activities relating to managing green infrastructure for community and 'Friends of' groups.

Also included is a legacy role to focus on building a pipeline of work in river valleys, to undertake site surveys, to establish land ownership, and to develop work plans for priority sites identified by partners and within the Our Rivers Our City action plans.

Castlefield Viaduct

The National Trust is in the early stages of a project to bring this Grade II-listed viaduct back into use, transforming it into a green oasis created by and for the benefit of local people.

Built in 1892 and constructed by Heenan and Froude (the engineers who worked on the iconic Blackpool Tower), the viaduct was used to carry heavy rail traffic in and out of Manchester Central railway station (now the Manchester Central Convention Complex). It stayed in use until 5 May 1969, when Central Station closed.

The vision is to transform Castlefield Viaduct into a free-to-access park and meeting place for people and nature. It will be a space that respects the listed structure, celebrates the nature, beauty and history of the viaduct, and fits in with existing plans for the city.

As well as bringing people closer to nature in the city, it will be a stepping stone to other Manchester green spaces and attractions on foot or bike. The viaduct will take its place in this vibrant area for cultural and heritage, sitting alongside iconic Manchester venues, including the Science and Industry Museum and The Factory.

A £2million, two-year pilot project will undertake extensive analysis, viability assessments and consultation, with visitors being able to access the structure safely for the first time in many years.



Mayfield

“Forgotten no longer, Mayfield is about to become a remarkable part of the city – a place that celebrates its past and marches into the future with a swagger.”

Page 85
Mayfield Design Team

The Mayfield project aims to regenerate 23 acres of underused land around the historic depot across the road from Piccadilly railway station. The long-term plan for Mayfield is to create a £1billion mixed-use community over the next ten years,

At the heart of this £23million landscape-led transformation is not just a new park, but the revitalising of over 400 metres of culverted river, hidden for nearly 100 years, and approximately 13 acres of new public realm.

Open space, trees, the natural meander of the Medlock, and increased biodiversity: Manchester will have a new green heart in Mayfield.

Spanning 6.5 acres, Mayfield’s sequence of spaces will invite you on a journey of discovery, from the informal, through to the more natural and wild. It will be an urban square with a buzz of activities: open greens for lawn sport and informal play, adventure play areas, floodable meadows and biodiverse ecological areas beside the river, as well as quieter spaces for escape and contemplation. Sheltered structures and areas will make sure it’s a park for all types of weather and seasons.

The most ambitious new park creation scheme in the city centre ever undertaken in recent years will be opened in 2022.



Victoria North

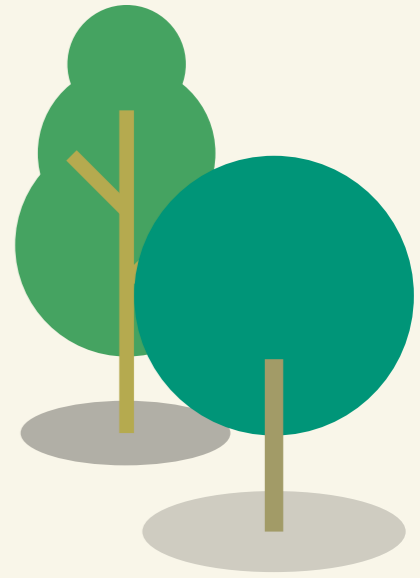
This is the North of England’s biggest urban regeneration project, and the biggest renewal project Manchester has ever seen.

This landscape-led vision, jointly developed and funded by FEC and Manchester City Council, is set to create 15,000 new homes across 155 hectares and seven neighbourhoods over the next 20 years.

The redevelopment project will create better-connected public spaces, new and improved transport links, and more homes, parks and retail spaces for the city’s growing population.

At the heart of Victoria North will be City River Park, which will cover 46 hectares of new and improved parkland. The park will vary in character, providing a diverse and active new recreational corridor for the community, including parks and smaller amenity spaces.

City River Park will enhance existing habitats and create new ones for wildlife. It will be guided by climate-positive design to create results that are as carbon-neutral as possible. Connectivity and accessibility will be key, ensuring high-quality pedestrian and cycle movement within the green spaces for active lifestyles and better wellbeing.



7. IMPLEMENTATION PLAN

Vision and objectives

The overarching vision for the strategy and its four key objectives remain the same:

“By 2025, climate-resilient well-maintained green and blue spaces remains an integral part of all neighbourhoods. The city’s communities will be living healthy, fulfilled lives, enjoying access to parks and green spaces, and safe green routes for walking, cycling and exercise throughout the city. Green and blue infrastructure will be supporting Manchester’s growth.”

Page 86

The key objectives are to:

1. Improve the quality and function of existing green and blue infrastructure
2. Use appropriate green and blue infrastructure as a key component of new developments to help create successful neighbourhoods and support the city’s growth
3. Improve connectivity and accessibility to green and blue infrastructure within the city and beyond
4. Improve and promote a wider understanding and awareness of the benefits that green and blue infrastructure provides for residents, the economy and the local environment

MONITORING AND REVIEW:

We will continue to be transparent in our reporting, with regular annual updates to the relevant Council committees as appropriate, under the governance of both the Council’s GI Board and the Manchester Green Infrastructure Group.

We are constantly looking for appropriate and measurable key performance indicators, and will capture activity accordingly, both qualitative and quantitative.

These indicators and updates are not exhaustive, but aim to show that the direction of travel is both collaborative and positive in relation to achieving the Strategic Vision.



In relation to each relevant objective, we will endeavour to report on:

OBJECTIVE ONE:

Outcome – improved quality and functionality of GI

- The number of relevant known projects delivered or in delivery
- Amount invested
- Number of trees planted
- Percentage of SBIs in active Conservation Management
- Number of Local Nature Reserves declared
- Number of jobs created.

OBJECTIVE TWO:

Outcome – increased integration of GI and NBS into development and regeneration

- The number of relevant known projects delivered or in delivery
- Amount invested
- Number of jobs created.

OBJECTIVE THREE:

Outcome – better connected GI

- The number of relevant known projects delivered or in delivery
- Hectares of land or kilometres of green and blue access routes improved
- Increased species recorded as part of Nature Recovery Network
- Increase in people recording nature as part of Nature Recovery Network
- Amount invested
- Number of jobs created.

OBJECTIVE FOUR:

Outcome – increased understanding and awareness-raising

- The number of relevant known projects delivered or in delivery
- Number of events delivered
- Number of people engaged
- Number of volunteer hours delivered
- Number of partners involved
- Percentage of population valuing green spaces
- Percentage of people satisfied with green space management and survey.

8. FUNDING AND DELIVERY

Once again we intend to provide a clear and robust set of tangible headline actions and supporting projects demonstrating strong and sustainable progress over the next five years, building on the progress to date.

These are challenging times for all local authorities. There is not a war chest of ring-fenced funding available for GI investment. We need to look at new ways to fund and look after our green and blue spaces. The opportunity lies in mainstreaming the GI agenda, tying into the city's other priority themes, not competing against other priorities. It will make the consideration and delivery of Nature Based Solutions to be the norm – not the exception.

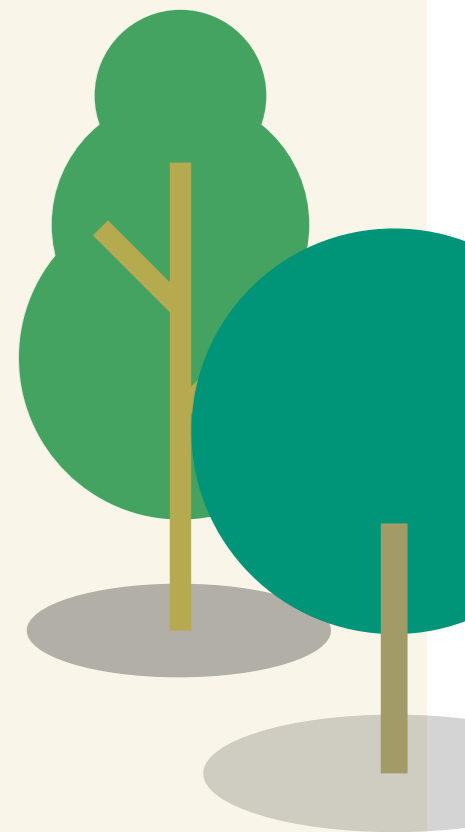
For example, Climate Emergency has acted as the catalyst for investment in new tree-planting. Sustainable travel investment has provided us with significant Bee Network investment. Area-based regeneration has provided us with the landscape-led

opportunities outlined in Mayfield and Victoria North.

The strategy provides the hooks and opportunities within the objectives and headline actions for partnerships and projects to evolve, building confidence that this is the direction Manchester is heading. It's a clearer route for diverse and varied investment in green and blue infrastructure.

The new Implementation Plan proves the point that investment into GI is tangible, secure and desirable. From major investor and landscape-led approaches such as Mayfield and Victoria North, to Government-driven campaigns like the Green Recovery Challenge fund, the action plan gives us the confidence to develop strong project bids and take advantage of these opportunities.

Deeds not words. The following pages aim to capture the pioneering spirit of green and blue infrastructure activity in Manchester in the years ahead.



OBJECTIVE 1: IMPROVING THE QUALITY AND FUNCTION OF GBI

| Headline actions | Existing practical GI commitments | Key project pipeline | Lead Manchester City Council teams | Key partners |
|-------------------------------------------------------------------------------------------------------------------------------------------------------------------------------------------------------------------------------------------------------------------------------------------------------------------------------------------------------------|---------------------------------------------------------------------------------------------------------------------------------------------------------------------------------------------------------------------------------------------------------------------------------------------|--------------------------------------------------------------------------------------------------------------------------------------------------------------------------------------------------------------------------------------------------------------------------|------------------------------------|------------------------------------------------------------------------------------------|
| 1 River valleys and canals: we will continue to invest in the river valleys and canals to provide attractive settings for communities, leisure and recreation, health, and biodiversity. | There is an active commitment to managing land across the city's three main river valleys: the Irk, Medlock and Mersey. The Our Rivers Our City strategy adds an additional focus to priorities across these three catchments. | Delivery of Our Rivers City Strategy and action plans 2021–23 GW Resilient River Valleys: £950,000 2020–24 Restoration of Ordinary Watercourses: £893,000 2022–23 Restoration of Trash Screens Phase 2: £150,000 City centre canals 2021–23: £150,000 | Parks FRM | Catchment partnerships Environment Agency Canal and River Trust The Natural Course |
| 2 Parks: we will enhance existing parks to maximise their potential in making Manchester a world-class city. | There is significant ongoing investment across the city's extensive 160-site portfolio of parks and green spaces, plus the new Park Investment Programme. Consideration of opportunities for appropriate GI (new and retrofit) during negotiations on all relevant planning applications | Large-scale capital Park Investment Programme: 2021–25 £12.5million | Parks | charities community groups |
| 3 Trees and woodlands: we will provide effective and appropriate tree and woodland management and planting. | The city has a Tree and Woodland action plan with an aim to improve management and sustainably enhance tree canopy cover over time. | Delivery of the Tree and Woodland Action Plan including: Tree Action Mcr Programme 2020–23: £1million Delivery of Managing Manchester's Trees Report Integration of Greater Manchester All Our Trees Strategy | Arbor Parks | City of Trees Woodland Trust Wildlife Trust Groundwork Trust |
| 4 Gardens: we will protect, promote and enhance private gardens to support climate resilience. | The city has extensive garden coverage. The total area of domestic garden green space in Manchester is 12km ² (My Back Yard: MMU 2018). | Delivery of garden projects as part of new Biodiversity Strategy, including My Wild Garden Campaign and ongoing support of RHS In Bloom campaign | Neighbourhood teams | RHPs RHS Wildlife trusts Groundwork Trust Hubbub |
| 5 Other land: we will improve existing and introduce new GI/NBS within large estates and land holdings, eg. registered housing providers, cemeteries, hospitals, universities, car parks. | Ongoing GI commitments through existing land management contracts of major landowners, eg. housing providers. | Relaunch of the Housing Providers GI Group 2021 Delivery of New Castlefield HighLine project 2021/22 Delivery of new city centre green space at Mayfield 2020–22: £23million | Planning Housing Cemeteries | RHPs Southways Lead universities National Trust |
| 6 We will develop healthy and climate resilient communities by delivering focused neighbourhood greening projects. | Numerous growing projects are undertaken across the city, with hubs in Hulme, Wythenshawe and Heaton Park. There are also 41 allotment sites across the city. | Delivery of Parks for People programme 2021–25: £12.5million Delivery of Zero-Carbon Community Programme 2021/22 Continued delivery of Real Food Wythenshawe project 2021–23 Continued delivery of outdoor activity programme 2021–24 | Neighbourhood teams Parks | MCCA Hubbub Amity Tyndall Centre Commonplace MCRactive |
| 7 We will protect and enhance the city's key ecological assets, including Sites of Biological Importance (SBI). We will increase the number of SBI in active management to conserve, protect and enhance biodiversity. Local Nature Reserves: Increase the coverage of LNRs in line with national guidance to one hectare of LNR per 1,000 residents. | Manchester has 37 SBI, with over 60% in active conservation management. Manchester has eight LNRS covering 392 hectares. | Delivery of new Biodiversity Strategy 2021–30 Twelve new Parks SBI Action Plans to be delivered 2020–22 New Woodland SBI project bids being developed by CoT 2021–23 New programme of LNR declarations to be developed 2022–25 | Parks EPI | GMEU Wildlife Trusts City of Trees RSPB |

OBJECTIVE 2: USE APPROPRIATE GREEN AND BLUE INFRASTRUCTURE AS A KEY COMPONENT OF NEW DEVELOPMENTS TO HELP CREATE SUCCESSFUL NEIGHBOURHOODS AND SUPPORT THE CITY'S GROWTH

| Headline actions | Existing practical GI commitments | Key project pipeline | Lead Manchester City Council teams | Key partners |
|-----------------------------------------------------------------------------|------------------------------------------------------------------------------------------------------------------------------------------------------------------------------------|---------------------------------------------------------------------------------------------------------------------------------------------------------------------------------------------------------------------------------------------------------------------------------------|------------------------------------|------------------------------|
| 1 Embed G&BI into key plans and policies.- | There is a commitment to: review all related Local Plan Policies in 2021 Produce a new biodiversity strategy in 2022 Develop a new Tree and Woodland Action Plan in 2022. | Local Plan refresh due to be completed 2023. Places for Everyone (nine Greater Manchester authorities) Climate Change Framework 2.0 Embedding GI into partner plans, eg. registered providers, health etc Integrate GI into local/ neighbourhood-level regeneration frameworks. | EPI | Developers |
| 2 Embed GI into citywide strategic regeneration and infrastructure schemes. | Key demonstrators will include GrowGreen West Gorton, Community Parks and Mayfield. | Victoria North 2021–25 Eastern Gateway 2021–25 HS2 2021–25 Hospital infrastructure improvements – north/south 2021/25 | Planning Strategic Development | Developers National Trust |
| 3 Embed GI in developments of any scale across the city. | Consideration of opportunities for appropriate GI (new and retrofit) during negotiations on all relevant planning applications | Development of appropriate policy approaches in the Local Plan | Planning Strategic Development | RHPs Private landowners |
| 4 Embed GI into city centre development and planning initiatives. | Major GI/NBS improvements through projects listed. | Mayfield 2021/22 Victoria North 2021–25 Glade of Light 2021/22 Deansgate 2021–25 Medieval Quarter 2021–25 Factory 2021–23 Lincoln Square 2021/22 Piccadilly Gardens 2021–25 Deansgate 2021–24 Castlefield Viaduct Study 2021/22 | Planning Strategic Development | Developers National Trust |



OBJECTIVE 3: IMPROVING ACCESS AND CONNECTIVITY FOR PEOPLE AND WILDLIFE

| Headline actions | Existing practical GI commitments | Key project pipeline | Lead Manchester City Council teams | Key partners |
|-------------------------------------------------------------------------------------------------------------------------------------------------------------------------------------------------------------------------------|----------------------------------------------------------------------------------------------------------------------------------------------------------------------------------------------------------------------------------------------------------------------------------------------------------------------------------------------------|-----------------------------------------------------------------------------------------------------------------------------------------------------------------------------------------------------------------------------------------------|------------------------------------|-------------------------------------------------------------------------------------|
| 1 Improving green routes: greening transport routes (eg. tramlines, footpaths, cycle routes, roads, rail corridors including disused) to encourage walking and cycling, reduce flood risk and provide corridors for wildlife. | Ongoing commitments to manage sustainable transport corridors, such as Oxford Road Corridor, Chorlton Cycleway. | Bee Network capital programme 2021–25, including: £4.9million Fallowfield Loop route, North and Eastern Gateway, Ancoats development of new Local Nature Recovery Network. Pilots will be developed in North, Central and South Areas 2021–23 | Highways Parks EPI | TfGM Wildlife trusts Sustrans |
| 2 Improving blue routes: river valleys and canals; enhance river valleys and canal tow paths to improve accessibility and use as active travel routes and wildlife corridors. | There is an active commitment to managing land across the city’s three main river valleys, the Irk, Medlock and Mersey, which includes improvements to access where appropriate. The Canal and River Trust is actively trying to improve Ashton and Rochdale Canal towpaths and waterways. | Delivery of Our Rivers Our City Strategy and Action Plans Delivery of access improvement programme, including: Resilient River Valleys access improvements 2021–23 | Highways Parks EPI | Groundwork River Trust Canal and River Trust TfGM |
| 3 Cross-boundary working to improve access and connectivity. | Manchester is committed to cross-boundary partnership working, and is a key partner of both GMCA and TfGM. Key initiatives will include the integration of Manchester City Council projects into the wider Bee Network, and the integration of the Manchester Biodiversity Strategy into the new Greater Manchester Local Nature Recovery Network. | Integration of new GMLNRN Delivery and promotion of the Bee Network capital investment 2020–24 Continued delivery of outdoor activity programme 2021–24: £30million Delivery of the My Wild City Biodiversity Strategy 2021–30 | Highways Parks EPI | Natural England GMCA Wildlife trusts Ramblers TfGM GMEU MCRactive |



OBJECTIVE 4: INCREASED G&BI UNDERSTANDING AND AWARENESS-RAISING

| Headline actions | Existing practical GI commitments | Key project pipeline | Lead Manchester City Council teams | Key partners |
|----------------------------------------------------------------------------------------------------------------------------------------|---------------------------------------------------------------------------------------------------------------------------------------------------------------------------------------------------------------------------------------------------------------------------------------------------|--------------------------------------------------------------------------------------------------------------------------------------------------------------------------------------------------------------------------------------------------------------------------------------------------------------------------------------------------------------------------------------------------------------------------------------------------------------------------|----------------------------------------------------------------------------------------------------------------|-------------------------------------------------------------------------------------------------------------------------------------|
| 1 Monitor existing G&BI within the city. | There is some autonomous monitoring of G&BI within the city through parks, tree management systems etc and independently, ie. through the Greater Manchester Ecology Unit and universities. Partners are encouraged to capture, share and monitor GI-related activity. | Greater Manchester Ignition project will help establish a new GI baseline and Planning Support System (GM Explorer), Tree Opportunity Mapping and manage Manchester's trees. Ongoing monitoring of West Gorton Sponge Park via Grow Green and The University of Manchester | City Policy and EPI | GMCA The University of Manchester MMU EA GMEU MNC |
| 2 Develop research into the benefits of G&BI to provide the basis for new policy, projects, programmes and investment mechanisms. | Key supporting evidence has been commissioned and projects developed, including: Our Rivers, Our City My Wild City Managing Manchester's Trees My Backyard Garden Survey GHIA (importance of GI to an ageing population) IGNITION project, looking at investment opportunities in GI. | New evidence and guidance to support decision-making around key themes: Nature of Manchester natural capital assessment IGNITION GI baseline Evidence base Planning support system River valleys: Our Rivers Our City Trees: Managing Manchester's Trees Biodiversity: My Wild City Biodiversity Strategy Health: GHIA (importance of GI to an ageing population) Gardens: My Backyard NBS in Neighbourhoods: Adaptation Pathways approach | EPI | The University of Manchester MMU GMCA TEP City of Trees GrowGreen National Trust MNC |
| 3 Raise awareness of the benefits of G&BI through public engagement and involvement, promotion, communication, education and training. | Manchester has an ongoing commitment to engage and raise awareness of the importance and value G&BI brings to the city through numerous campaigns and projects. | Neighbourhood Climate Action Plans 2021-23 My Wild City Programme 2021/22 North Manchester Nature Recovery Network 2021/22 In Our Nature environmental campaign 2021/22 Tree Action Mcr Planting programme 2021-23 Britain in Bloom Campaign 2021-25 Our Rivers Our City Training and Skills programme 2021-23 | Comms, supported by EPI, parks, neighbourhoods, policy and partnerships, city centre growth and infrastructure | Wildlife Trust MCCA Hubbub City of Trees RHS Groundwork National Trust Rivers Trust Community groups MNC |
| 4 Showcase local best practice and seek recognition for delivered projects. | CIEEM 2018 Award winner MGO for Knowledge Exchange Continued development of a portfolio of GI-related case studies (70 at present). | CIEEM Awards 2021 commended finalist – My Wild City Britain in Bloom Awards | Neighbourhoods | CIEEM RHS National Trust Groundwork Trust Wildlife Trust Rivers Trust MNC |

9. APPENDIX

Appendix 1. Introducing the IGNITION GI baseline

IGNITION GI baseline summary for Manchester City Council

The European Union-funded IGNITION Project is developing funding and delivery

mechanisms to increase and enhance Green Infrastructure (GI) and Nature Based Solutions (NBS) across Greater Manchester in response to the risks posed by a rapidly changing climate. Within the project, a new GI baseline has been developed for Greater Manchester, to better understand the existing types and distribution of GI. This baseline offers new data and insights into Manchester's GI.

Other representations of Manchester's GI already exist, such as the classification produced within The University of Manchester's GHIA project (Green Infrastructure to Promote Health and Wellbeing in an Ageing Population).

Manchester City Council also has a Green Infrastructure Typology developed to inform its Green and Blue Infrastructure Strategy (BDP, Eftec and Countryside 2015). However, these resources did not meet the needs of the IGNITION Project related to quantifying GI and providing a basis for spatially targeting future GI interventions. Therefore, a new GI baseline was developed.

The IGNTION GI baseline for Greater Manchester is an innovative output. It builds on, and in some cases enhances, the best available spatial data, and enables us to provide the most accurate quantification of Manchester's GI to date. Crucially, for the first time, it presents a two-dimensional GI baseline incorporating surface and tree canopy cover data.

What is Manchester's current GI baseline?

Manchester's GI has been quantified using the IGNITION GI baseline. The results are presented in Table 1 (and discussed on p.31 above).

Table 1: Details of Manchester's land cover and tree canopy cover

| LAND COVER TYPE | LAND COVER AREA (KM ²) | LAND COVER % TO MANCHESTER AREA | TREE CANOPY COVER (KM ²) | TREE CANOPY COVER % TO TOTAL LAND COVER AREA |
|----------------------|------------------------------------|---------------------------------|--------------------------------------|----------------------------------------------|
| Blue space | 1.262 | 1.088 | 0.235 | 18.583 |
| Green space | 60.757 | 52.36 | 19.029 | 31.319 |
| Grey space | 53.120 | 45.774 | 3.956 | 7.447 |
| Land use changing | 0.878 | 0.76 | 0.105 | 11.997 |
| Other natural | 0.023 | 0.023 | 0.003 | 13.460 |
| Unknown | 0.007 | 0.007 | 0.001 | 16.178 |
| All land cover types | 116.047 | 100 | 23.329 | 20.103 |

The IGNITION GI baseline also enables a better understanding of the spatial distribution of Manchester's GI. Figure 1 draws on the GI baseline to show tree canopy cover density across the city. This demonstrates that wards including Chorlton and Higher Blackley have higher density of canopy cover, whereas Deansgate and Woodhouse Park (which houses the airport) densities are lower. Figure 2 provides a more detailed view of canopy cover within the Chorlton Park ward. This figure shows canopy cover density over distinct parcels of land that are representative of the urban form within the ward, and offers a clear indication of

which areas have higher and lower canopy cover densities. In addition to tree canopy cover, the IGNITION GI baseline also provides data and enables visualisations on Manchester's surface cover. 149 surface cover forms, classified into 7 broad categories as displayed on the map of the Manchester district (Figure 3), are incorporated within the GI baseline. The map of the Gorton and Abbey Hey ward (Figure 4) visualises a larger number of surface cover forms at a finer scale. 39 surface cover functions, including public parks, schools, agricultural land and rail lines for example, are also represented within the GI

baseline. This GI baseline land cover data, and the tree canopy cover data, will be easily accessible to non-GIS users, via the Greater Manchester GI Explorer. This data will be accessible at district, ward and local neighbourhood scales to inform strategic and local GI and land use planning. The GI baseline data presented in Table 1, and Figures 1-4, was developed using the OS MasterMap Greenspace Layer, the OS MasterMap Topography Layer and the ESRI image layer service. Data derived from the City of Trees tree canopy and tree-line layers enabled tree canopy cover data to be included as part of the baseline.

Figure 1. Canopy cover density across the Manchester district

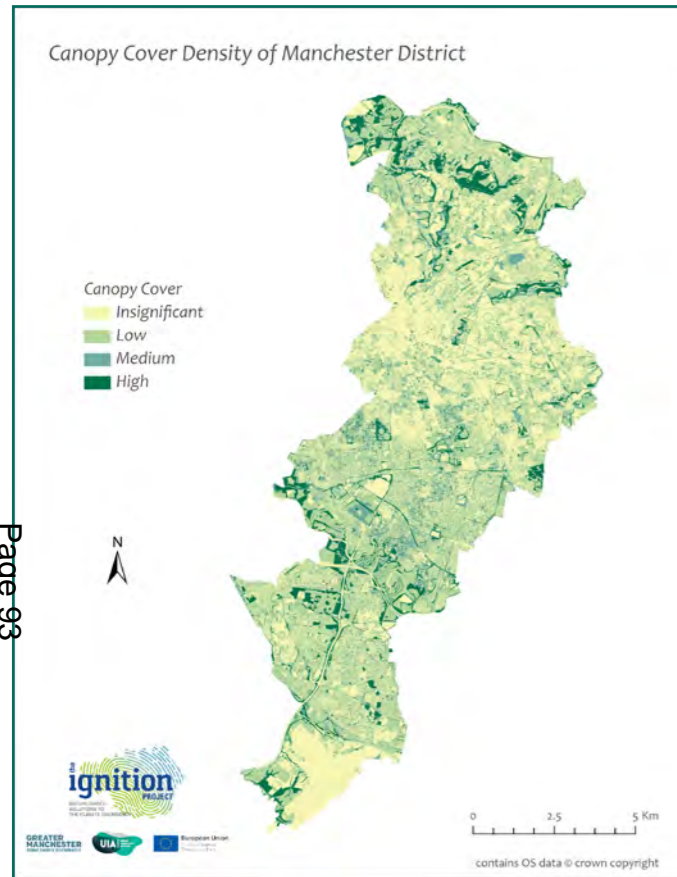


Figure 2: Canopy cover density across the Chorlton Park ward

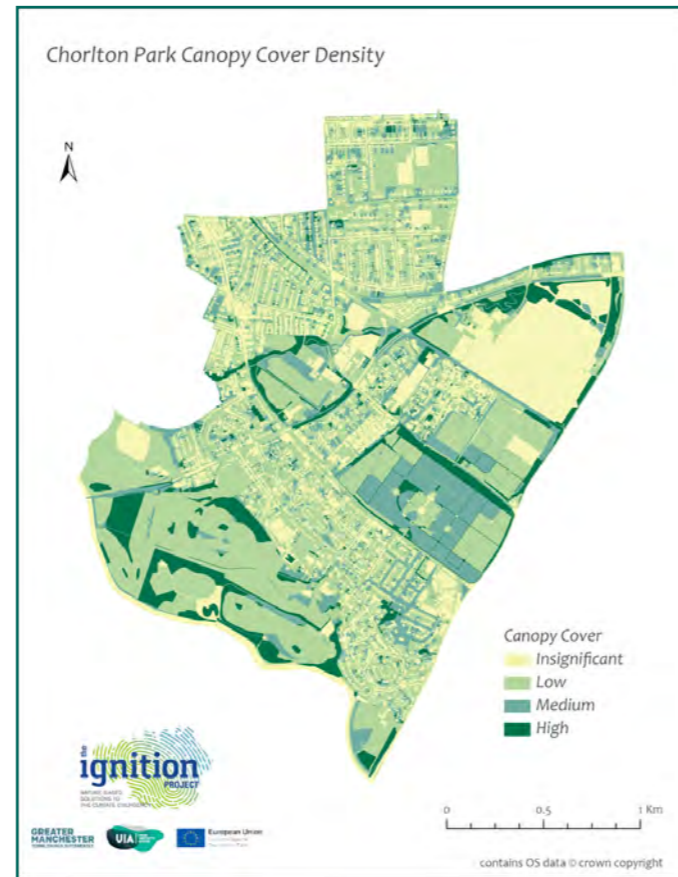


Figure 3: Land cover types for the Manchester district

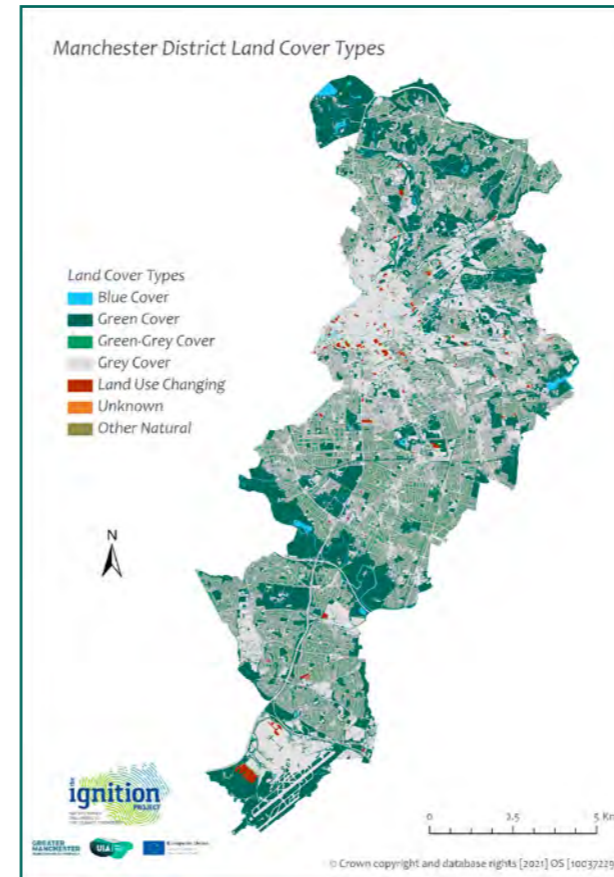
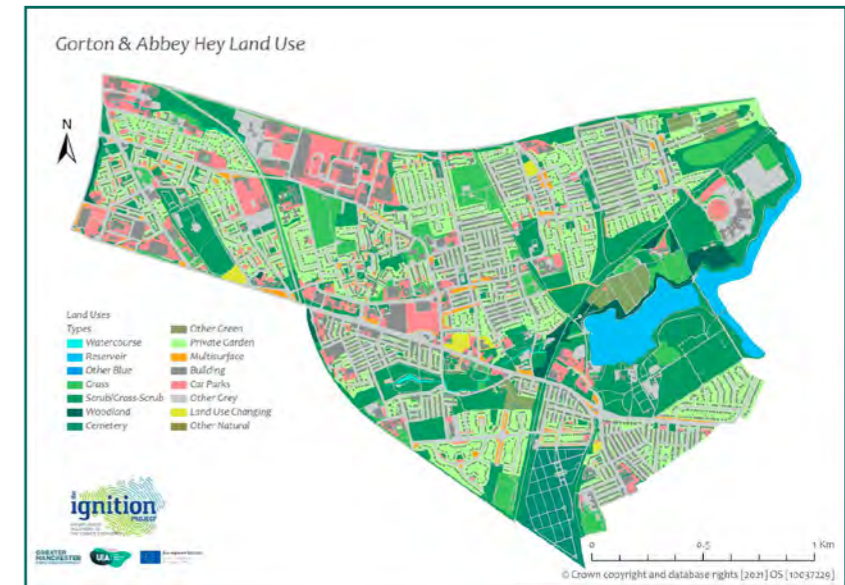


Figure 4: Gorton and Abbey Hey land uses



How can the IGNITION GI baseline be used? Introducing the Greater Manchester GI Explorer

In addition to the GI baseline, the IGNITION Project has also developed the Greater Manchester GI Explorer, a user-friendly software system that allows practitioners without GIS skills or capacity to visualise and analyse Greater Manchester's GI baseline data including surface cover and canopy cover. The GI Explorer will support planning processes and decision-making linked to GI in Manchester, and will help to progress a spatially informed and strategic approach to identifying potential locations for GI conservation and enhancement.

The Greater Manchester GI Explorer provides the capability to analyse data linked to Manchester's GI to support end-user-driven priorities and objectives connected to conserving, enhancing and expanding GI. It enables GI surface and canopy data to be generated for specific blocks and parcels of land that closely match urban form patterns, and also at larger scales, including the district and its wards. It can inform activities, including the development of business cases for GI investment, spatially prioritising available resources for GI investment and intervention, supporting local plan preparation and policy implementation, and assisting development-planning decision-making. Details of the Greater Manchester GI Explorer will be available via the IGNITION project webpage.

10. CONTRIBUTORS

| | |
|----------------------------------------------------------------------------------|-------|
| Arboricultural Team, MCC | Arbor |
| Chartered Institute for Ecology and Environmental Management | CIEEM |
| City of Trees | CoT |
| Environment Agency | EA |
| Environment, Planning and Infrastructure Team, MCC | EPI |
| Flood Risk Management Team, MCC | FRM |
| Green Infrastructure and Health and Wellbeing Influences on an Ageing Population | GHIA |
| Greater Manchester Combined Authority | GMCA |
| Greater Manchester Ecology Unit | GMEU |
| Groundwork Trust | GW |
| The Wildlife Trust For Lancashire, Manchester and North Merseyside | LWT |
| Manchester Climate Change Agency | MCCA |
| Manchester City Council | MCC |
| Manchester Metropolitan University | MMU |
| Nature of Manchester | NoM |
| Manchester Nature Consortium | MNC |
| Natural England | NE |
| Ordnance Survey | OS |
| Registered Housing Providers | RHPs |
| Royal Horticultural Society | RHS |
| Royal Society for the Protection of Birds | RSPB |
| The Environment Partnership | TEP |
| Transport for Greater Manchester | TfGM |



This page is intentionally left blank

**Manchester City Council
Report for Information**

Report to: Environment and Climate Change Scrutiny Committee – 10 March 2022

Subject: Overview Report

Report of: Governance and Scrutiny Support Unit

Summary

This report provides the following information:

- Recommendations Monitor
- A summary of key decisions relating to the Committee's remit
- Items for Information
- Work Programme

Recommendation

The Committee is invited to discuss the information provided and agree any changes to the work programme that are necessary.

Wards Affected: All

Contact Officers:

Name: Lee Walker
Position: Scrutiny Support Officer
Telephone: 0161 234 3376
Email: lee.walker@manchester.gov.uk

Background documents (available for public inspection): None

1. Monitoring Previous Recommendations

This section of the report lists recommendations made by the Environment and Climate Change Scrutiny Committee. Where applicable, responses to each will indicate whether the recommendation will be implemented, and if it will be, how this will be done.

| Date | Item | Recommendation | Response | Contact Officer |
|-----------------|-----------------------------------------------------------------------------------------------|--------------------------------------------------------------------------------------------------------------------------------------------------------------------------------------------------------------------------------------------------------------------------------------------------------------------------------------------------------|-------------------------------------------------------------------------------------------------|----------------------------------------------------------------------|
| 13 January 2021 | NESC/21/06 Monitoring and Compliance – Construction Sites | Recommend that Officers, in consultation with the Executive Member for Environment, Planning and Transport arrange a briefing session for Members of the Committee that provides an overview of a range of activities that included, but not restricted to planning and related enforcement; roles and responsibilities and Traffic Regulation Orders. | A response to this recommendation has been requested and will be reported back once received. | Julie Roscoe Director of Planning, Building Control and Licensing |
| 22 July 2021 | ECCSC/21/11 Climate Change Action Plan Quarterly Progress Report: Q1 April - June 2021 | That every school on a main arterial route with high volumes of traffic have a tree planting plan included as part of the tree strategy to promote clean air. | A response to this recommendation has been requested and will be reported back once received. | Julie Roscoe Director of Planning, Building Control and Licensing |
| 14 October 2021 | ECCSC/21/21 Climate Change Action Plan Quarterly Progress Report, Q2 July - September 2021 | 1. The Executive Member for Environment give consideration to establishing a Climate Clock in the city, similar to that in Glasgow; 2. The Executive Member for Environment and Officers arrange a briefing session for Members on the | A response to these recommendations has been requested and will be reported back once received. | Cllr Rawlins Executive Member for Environment |

| | | | | |
|-----------------|------------------------------------------------------------------|-------------------------------------------------------------------------------------------------------------------------------------------------------------------------------------------------------------------------------------------------------------------------------------------------------------------------------------------------------------------------------------------------------------------------|-------------------------------------------------------------------------------------------------------------------------------------------------------------------------------------------------------------|-------------------------------------------------------------------------------------------------------------------|
| | | modelling that was used to agree and set the suite of targets reported in the Action Plan. | | |
| 9 December 2021 | ECCSC/21/33 Aviation and Carbon Emissions | <p>1. That the Executive Member for the Environment convene a meeting with Members of the Committee to discuss further the issues raised at the meeting.</p> <p>3. That a report on both Staff Active Travel Plans and Member Active Travel Plans be submitted for consideration at an appropriate time.</p> | <p>The Executive Member for Environment is progressing this recommendation.</p> <p>The Executive Member for Environment has advised that Active Travel is considered by the Economy Scrutiny Committee.</p> | <p>Cllr Rawlins Executive Member for Environment</p> <p>Cllr Rawlins Executive Member for Environment</p> |
| 9 December 2021 | ECCSC/21/34 Grounds Maintenance Update: The Use of Pesticides | <p>1. That a briefing note be prepared by Officers that describes the approach taken by other Local Authorities to stop using Glyphosate and the alternate methods of weed control adopted.</p> <p>2. That a briefing note be prepared by Officers that describes the approach taken by local Registered Housing Providers to reduce their use of Glyphosate and the alternate methods considered to control weeds.</p> | The Executive Member for Environment has advised that both of these recommendations have been noted and work has begun to provide a response to these. | Heather Coates in consultation with Cllr Rawlins, Executive Member for Environment |
| 13 January 2022 | ECCSC/22/05 Overview Report | Recommend that the Executive Member for Environment prepare a briefing note to be circulated to all Members that provide an update on recent developments in relation to the | A response to this recommendation has been requested and will be reported back once received. | Cllr Rawlins Executive Member for Environment |

| | | | | |
|--|--|--------------------------------------------------------------|--|--|
| | | implementation of the Clean Air Zone for Greater Manchester. | | |
|--|--|--------------------------------------------------------------|--|--|

2. Key Decisions

The Council is required to publish details of key decisions that will be taken at least 28 days before the decision is due to be taken. Details of key decisions that are due to be taken are published on a monthly basis in the Register of Key Decisions.

A key decision, as defined in the Council's Constitution is an executive decision, which is likely:

- To result in the Council incurring expenditure which is, or the making of savings which are, significant having regard to the Council's budget for the service or function to which the decision relates, or
- To be significant in terms of its effects on communities living or working in an area comprising two or more wards in the area of the city.

The Council Constitution defines 'significant' as being expenditure or savings (including the loss of income or capital receipts) in excess of £500k, providing that is not more than 10% of the gross operating expenditure for any budget heading in the in the Council's Revenue Budget Book, and subject to other defined exceptions.

An extract of the most recent Register of Key Decisions, published on **28 February 2022**, containing details of the decisions under the Committee's remit is included overleaf. This is to keep members informed of what decisions are being taken and to agree, whether to include in the work programme of the Committee.

There are no Key Decisions currently listed within the remit of this Committee.

**Environment and Climate Change Scrutiny Committee
Work Programme – March 2022**

Thursday 10 March 2022, 10:00 am (Report deadline Monday 28 February 2022)

| Item | Purpose | Lead Executive Member | Lead Officer | Comments |
|----------------------------------------|--------------------------------------------------------------------------------------------------------------------------------------------------------------------------------------------------------------------------------------------|-----------------------|----------------|----------|
| Green and Blue Infrastructure Strategy | To receive an update report on the Green and Blue Infrastructure Strategy. This report will also provide an update on the implementation of the Manchester Tree Strategy. | Cllr Rawlins | Julie Roscoe | |
| Waste Review Report | To receive a report that describes the review of the collection and street cleansing arrangements, noting that the contract with Biffa is approaching its first break clause. The report reviews the different delivery options available. | Cllr Rawlins | Heather Coates | |
| Overview Report | This is a monthly report, which includes the recommendations monitor, relevant key decisions, the Committee's work programme and any items for information. | - | Lee Walker | |

Thursday 26 May 2022, 10am (Report deadline Tuesday 17 May 2022)

| Item | Purpose | Lead Executive Member | Lead Officer | Comments |
|--------------------------|------------------------------------------------------------------------------------------------------------------------------------------------------|----------------------------|---------------|--------------------------------------------------------|
| Work Programming Session | The Committee will receive presentations from Directors on upcoming issues and challenges within the Committee's remit, following which Members will | Cllr Akbar Cllr Rawlins | Fiona Worrall | This part of the meeting will be closed to the public. |

| | | | | |
|--|--------------------------------------------------------|--|--|--|
| | determine the work programme for the forthcoming year. | | | |
|--|--------------------------------------------------------|--|--|--|

Items to be scheduled

| Item | Purpose | Lead Executive Member | Lead Officer | Comments |
|-----------------------------|---------------------------------------------------------------------------------------------------------------------------------------------------------------------------------------------------------------------------------------------------------------------------------------------------------------------------------------|-----------------------|---------------------------------|-----------------------------------------------------------------------------|
| Local Energy Area Plan | <p>To receive a report that provides information on the Local Energy Area Plan.</p> <p>Local Area Energy Planning (LAEP) is a process which has the potential to inform, shape and enable key aspects of the transition to a net zero carbon energy system. Local Area Energy Planning was developed by Energy Systems Catapult .</p> | Cllr Rawlins | Michael Marriott Mark Duncan | |
| Manchester Food Board | To receive an update report on the strategic aims and objective of the Manchester Food Board (MFB) in influencing and addressing climate change. | Cllr Rawlins | Barry Gillespie | Previously considered January 2022 |
| Recycling Quarterly Update | <p>To receive a quarterly update on recycling rates in Manchester.</p> <p>This report will also provide any updates in relation to recycling that are relevant to the Committee.</p> | Cllr Rawlins | Heather Coates | See minute ECCSC/22/03 Climate Change Action Plan - Quarterly Update report |
| Scrutiny and Climate Change | To receive a report that summarises the topics relating to climate change that have been considered by each of the other five scrutiny Committees over the previous 12 months. | Cllr Rawlins | Sarah Henshall | ECCSC/22/03 Climate Change Action Plan - Quarterly Update report |

